

CY210™ and TR5000/TR5500™ with Cyclone™ Cleaning Technology

High-Pressure Surface Cleaning and Water Recovery / Recycling System



Smart cleaning.

A Nilfisk-Advance Brand

 **Advance**

Cyclone™ surface-cleaning technology.

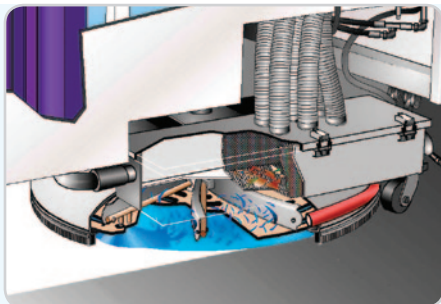
Outdoor surface cleaning will never be the same.

With the help of the unique Cyclone™ surface-cleaning technology, the Advance CY210™ with trailer system simultaneously blasts and scours away dirt and grime, reclaims cleaning water, and filters out contaminants allowing for the use of reclaimed water.

Call it pressure washing—with a twist. The patented Cyclone cleaning head provides deeper cleaning than spinner head or wand pressure washing and creates a controlled vortex that fully recovers water without a vacuum system.

Here's how it works:

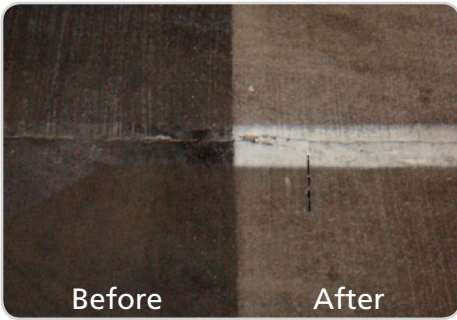
- Cleaning head with 8 turbine blades rotates at high speed to create a vortex of air and water equivalent to a category 4 hurricane.
- Continuous movement keeps water from pooling and allows incoming high-pressure water to directly contact the surface for maximum cleaning power.



- Waste water scours away dirt as it's pulled over the surface to complement the pressurized water and deeply clean in a single pass.
- The rotational movement of the turbine blades create lift that reclaims water, which is pumped back to the trailer—without a vacuum system.

- A multi-stage inline filtration system helps to minimize water usage and extend the cleaning cycle by removing dirt and contaminants, converting reclaimed water into reusable clean water.





Ground-in dirt, heavy buildup—even surface stains—are removed in a single pass with no damage to the surface.



Large caps and 3-inch drains make cleanup fast and simple.



The location of the spray tips—pointed straight down near the surface—ensures pressurized water contacts the surface with maximum cleaning power.

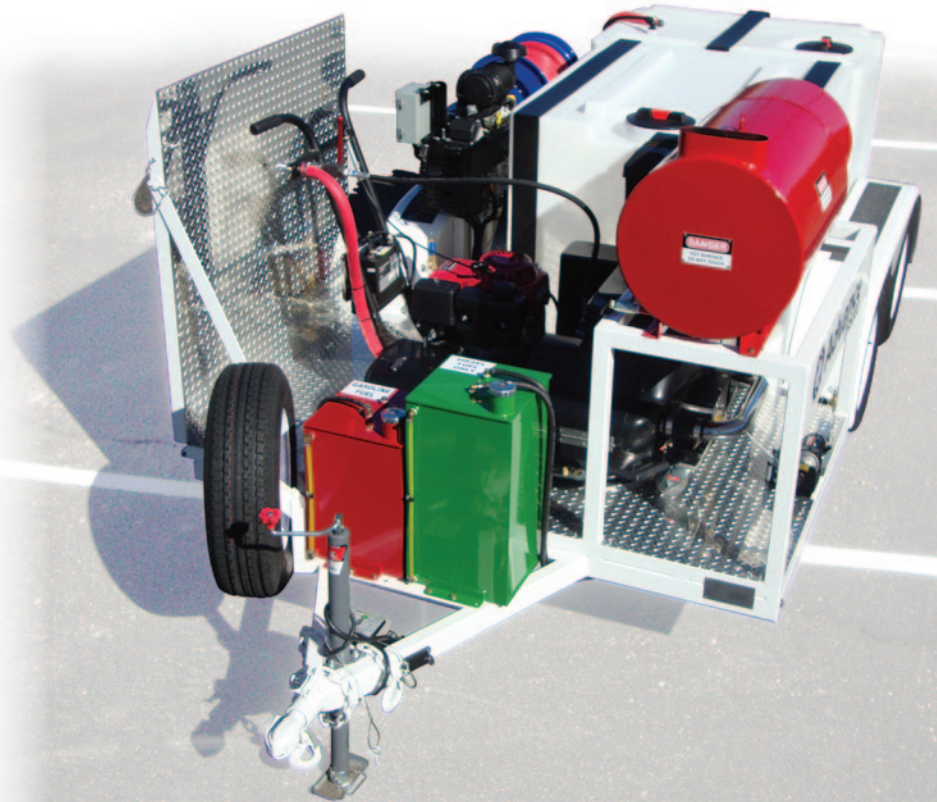


An optional, diesel-fueled water heater provides heated water for even more aggressive cleaning.

Faster, cleaner and greener outdoor surface cleaning.

- Cyclone cleaning technology removes ground-in dirt and grime to restore surfaces to like-new conditions.
- One-pass cleaning drastically reduces cleaning time and provides faster return on investment.
- Chemical-free cleaning and water recovery/recycling reduces water use, aids EPA compliance and offers the most environmentally friendly outdoor surface cleaning available.
- The fully integrated system eliminates traditional pressure washing hassles of standing water, ineffective vacuum water recovery systems and labor-intensive operation and maintenance.

The CY210 walk-behind unit integrates with the TR5000/5500 trailer system or any other trailer systems that recover waste water.



Cyclone CY210™ Technical Specifications

Model	Cyclone CY210
Cleaning Path	18 in
Input Pressure	Up to 5,000 psi
Pump Recommendations	Minimum requirement: 2000 psi and 4 GPM
Input Temperature	Up to 200° F
Power Source	13 hp Honda gasoline with electric start
Pressure Connections	Supply: 1/2 in FPT / Recovery: 1 in FPT
Spray Tips	2 spray tips protected by vented plate
Productivity – Max	Up to 223 ft per minute, yielding 20,000 square feet cleaned per hour
Productivity – Typical	10,000 square feet cleaned per hour
Wastewater Recovery Rate	30 GPM
Battery	12 V for starting
Weight	410 lb
Dimensions (L x W x H)	68 in x 35 in x 42 in
Chemical Requirement	Not required for deep cleaning

Cyclone TR5000/5500™ Technical Specifications

Model	Cyclone TR5000	Cyclone TR5500
Versions	Without recycling – 2 tanks, 330 gallon fresh with 220 gallon recovery	With recycling – 450 gallon
Wastewater Recovery Tank	Separate tank for recovery	Fiberglass with patented internal separation baffles Easy clean out tanks with top cap access and 3 in drains
Filtration	No filtration system	(2) 70 micron and (2) 30 micron / stainless steel, fully cleanable and reusable
Pressure Pump	3,600 psi @ 5 GPM / Giant Pump Kohler Pro Series 27 hp 2-cylinder, gasoline, electric start Alternator (required for heater option)	3,600 psi @ 5 GPM / Giant Pump Kohler Pro Series 27 hp 2-cylinder, gasoline, electric start Alternator (required for heater option)
Fuel Tanks	Gasoline / Diesel (for heater option)	Gasoline / Diesel (for heater option)
Productivity	Without recycling – 60 minutes	With recycling – 2-4 hours (application-dependent)
Pressure Lance	Standard	Standard
Pressure Hose	50 ft standard for both supply and recovery / Optional lengths available	
Options	Heater – diesel-fired burner	Heater – diesel-fired burner
Trailer Specifications:		
Dimensions (L x W x H)	174 in x 82 in x 77 in	174 in x 82 in x 77 in
Trailer Load Rating	7,000 lb capacity with dual-torsion-bar axle	7,000 lb capacity with dual-torsion-bar axle
Walk-Behind Loading System	Winch auto load system with pivoting ramp	Winch auto load system with pivoting ramp
Trailer Braking	Electric brakes	Electric brakes
Running and Brake Lights	High-visibility LED	High-visibility LED
Taillight Electrical Connection	5 pin round / 7 pin RV plug	5 pin round / 7 pin RV plug
Trailer Ball	2 5/16 in	2 5/16 in
Tires	15 in	15 in
Weight		
Full of Water with CY210	6,052 lb	7,080 lb
Empty with CY210	3,300 lb	4,100 lb

Specifications are subject to change without notice.

Optional features:

- Heater System, Inline, Diesel Fired
- Additional Hose Lengths – Up to 300 ft
- CY210 Also Available with Ultra-High-Pressure Platform (Up to 40,000 psi)

14600 21st Avenue North
Plymouth, MN 55447-3408
www.advance-us.com
Phone 866-429-8175
Fax 800-989-6566

Ask about our leasing options.

©2012 Nilfisk-Advance, Inc. Form L3217A 3-13-12



240 Superior Boulevard
Mississauga, Ontario, Canada L5T 2L2
www.nilfisk-advance.ca
Phone 800-668-8400
Fax 800-263-5111

