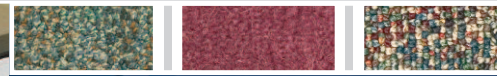


Advance AquaMAX[®]

Battery-Powered Automatic Extractor



DEFINING
CLEANING
INNOVATION



The most technologically advanced
walk-behind battery-powered
extractor on the market.

Advance AquaMAX®

Battery-Powered Automatic Extractor

New Technology Has Made Extraction the Preferred Method for Periodic Carpet Maintenance and Restorative Cleaning.

The Advance AquaMAX® battery-powered automatic extractor cuts operation costs with longer run-time and by minimizing operator dumping and refilling time. This walk-behind extractor is compact, yet holds 40 gallons (176 L) of solution and has a 25 inch (63.5 cm) cleaning path. The 238 Ah battery pack allows for approximately 3.5 hours of actual cleaning time. Large solution tank wide cleaning path and long run time all add up to higher productivity.

The Advance AquaMAX® has dual-purpose cleaning capability, low moisture and deep cleaning. For low moisture cleaning, use the maintenance mode. The maintenance mode sprays solution on the brush at a low g.p.m. This dampens the carpet and allows for quick dry times. The operator can clean for over two (2) hours (over 26,000 ft²) in maintenance mode without refilling or dumping the tanks. For deep cleaning, use the restoration mode. The restoration mode sprays the solution directly into the carpet and cleans over 5,200 ft² (483 m²) per tank. Switching between the two modes only requires a turn of the solution control knob.

Unique to the Advance AquaMAX® is a brush deck that slides out for edge cleaning next to walls that have handrails or other fixtures.

For those tough stains, the chevron brush reverses direction when machine direction changes which enables double scrubbing.

The Advance AquaMAX® is durable and maneuverable. The heavy-duty steel frame and scrub deck is corrosion protected and built to last. There is a centered drive wheel for maneuverability and tight turning.

When it comes to productivity, durability, and dependability, the Advance AquaMAX® sets the standard.

Ideal Applications Include —

- Airports
- Casinos
- Contract Cleaners
- Educational Institutions
- Health Care Facilities
- Hotels
- Office Buildings



VALUE FEATURES



Large solution tank, wide cleaning path and long run-time add up to high productivity.



Rugged construction with durable components assures years of reliable performance.



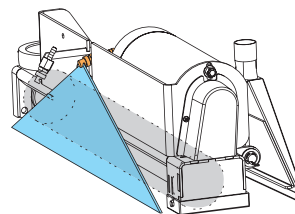
"No-tools-required" brush, vacuum shoes, and other components assures minimal down time.



Excellent pick up performance and dry times minimizes down time for foot traffic.

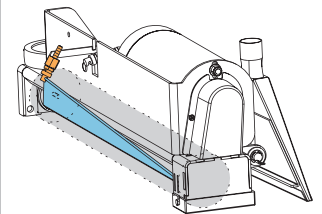
Dual Modes for Restorative or Maintenance Cleaning

1. Restoration Mode



Solution sprays directly into the carpet for deep cleaning.

2. Maintenance Mode



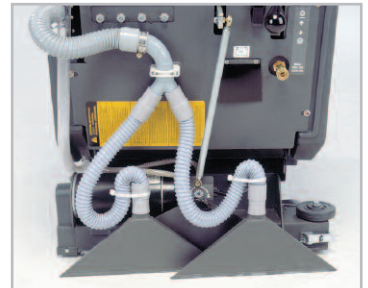
Solution sprays on brush for low moisture cleaning.



Brush deck slides out 5 in (13 cm) for edge cleaning



Front roller bumper is adjustable so the machine is parallel to the wall at all times



Two self-leveling vacuum shoes have down pressure applied to them so they follow the contour of the floor. The back panel has a port for accessories and a connector for recharging batteries



Controls are conveniently located. Speed control, master on/off, vacuum and pump switches are located at your fingertips



The operator control is ergonomically designed for maximum comfort and ease of operation

VALUE FEATURES



Brush is removable without using tools, so maintenance and cleaning of the brush is simple

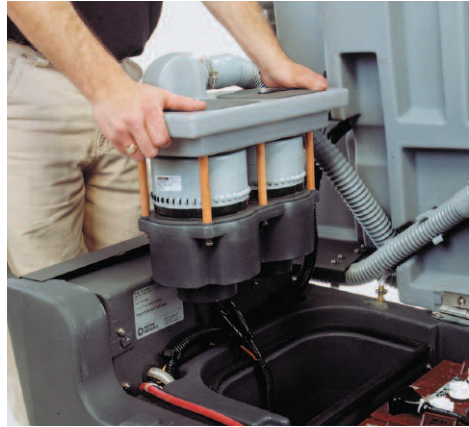


Advance AquaMAX® Keeps Operating Costs Down

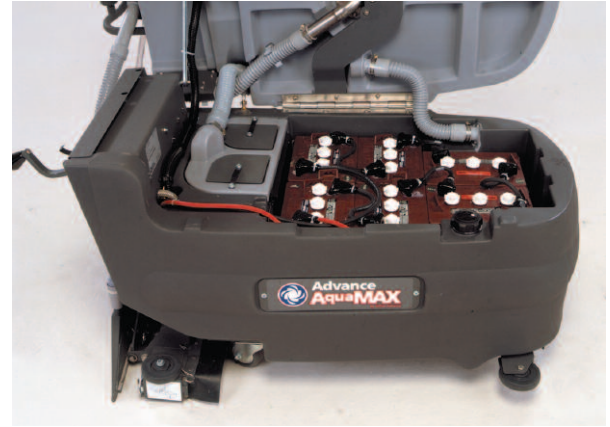
The Advance AquaMAX® is ruggedly built with durable components and systems, so it will keep on working for years. The brush, vacuum shoes, batteries and vacuum motor are easily accessible for tools-free removal. The Advance AquaMAX® is an investment in floor cleaning productivity that will pay off for years to come.

Defining Cleaning Innovation...

- Our products are designed using innovative technology that increases productivity and drives down the cost to clean.
- You can get expert service and maintenance for your products by factory-trained personnel around the world, as well as fast parts delivery.
- Maintain peak performance with genuine APA parts.



Easily lift the vacuum motors out of their compartment for servicing.

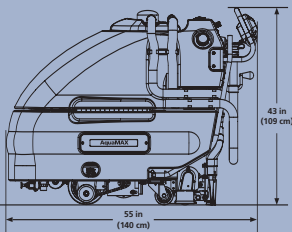
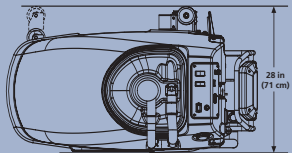


Hinged tanks allow easy access to batteries and for regular maintenance.

Technical Specifications

Solution Tank	40 gal (151 L) capacity, rotationally molded polyethylene with drain hose
Recovery Bladder	33 gal (125 L) capacity, PVC material, equipped with float ball screen and a 58 in (147 cm) long, 2 in (5 cm) diameter drain hose
Brush Length	25 in (63.5 cm)
Brush Speed	1,200 rpm
Vacuum Shoes	2 – 15.5 in (39 cm) self-leveling
Solution Pump	<u>Maintenance Mode</u> — 0.3 gpm (1.1 L/min) at 100 psi <u>Restoration Mode</u> — 0.9 gpm (3.4 L/min) at 100 psi
Coverage Rate	<u>Maintenance Mode</u> — 13,200 ft ² /hour (1226 m ² /hr) <u>Restoration Mode</u> — 7,200 ft ² /hour (669 m ² /hr)
Transport Speed	290 ft/min (88 m/min)
Vacuum Motor	Two 1.0 hp, 3-stage bypass, in parallel
Waterlift	72 in (183 cm)
C.F.M.	93 (2,633 L/min)
Brush Motor	0.5 hp (373 W)

Drive Motor	0.5 hp (373 W)
Power Source	Six 6 V / 238 Ah batteries
Sound Level	76 dB A
Construction	Frame and scrub deck are 10 gauge steel which is zinc plated and epoxy powder coated. All components that come in contact with water are stainless steel
Dimensions	Length — 55 in (140 cm) Width — 28 in (71 cm) Height — 43 in (109 cm)
Weight	Net — 430 lb (195 kg) machine only 830 lb (376 kg) machine with batteries Shipping — 950 lb (430 kg) with batteries and charger 585 lb (265 kg) without batteries
Part Number	56 212 250 — AquaMAX® with six 6 V / 238 Ah batteries, 20 A / 115 V charger



Specifications are subject to change without notice.



14600 21st Avenue North
Plymouth, MN 55447-3408
www.nilfisk-advance.com
Phone: 800-850-5559
Fax: 800-989-6566

396 Watline Avenue
Mississauga, Ontario, Canada L4Z 1X2
www.nilfisk-advance.com
Phone: 800-668-8400 or 905-712-3260
Fax: 800-263-5111 or 905-712-3255