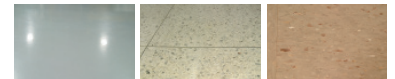


# SC750™ & SC800™

Walk-Behind Scrubbers

Available with **ecoflex™** system



Smart cleaning.

A Nilfisk-Advance Brand

 **Advance**  
Industrial Cleaning Equipment

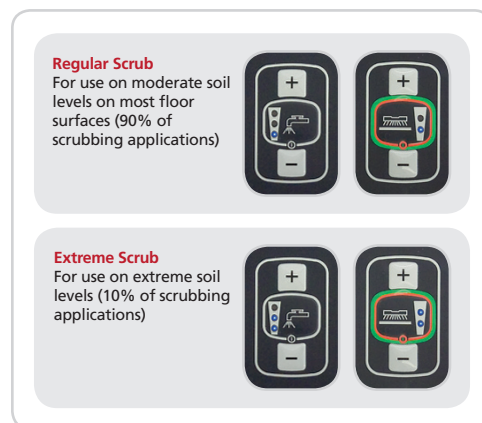


A built-in squeegee hanger makes transport easier and reduces trip and fall accidents.



An integrated debris catch cage traps and collects drain clogging debris.

*One-Touch™, integrated scrub pressure and solution flow rate settings:*



The ST 26 inch disc model – provides simple operation and robust scrubbing controls.

# SC750™ & SC800™ available with EcoFlex™ System

## Walk-Behind Scrubbers

### Simple operation, flexible performance.

Advance's rugged, low-maintenance SC750™ and SC800™ scrubbers deliver incredible value on a walk-behind platform.

High productivity per tankful allows for 84 minutes of continuous scrubbing, which reduces dump/refill cycles and helps provide fast ROI. The optional EcoFlex™ System offers the flexibility to clean across the entire cleaning spectrum from green to clean. At the touch of a button one can switch from chemical free cleaning to using an ultra low dilution ratio, and of course detergent can be used at full strength for the toughest of soils. The burst of power feature lets you easily apply more pressure, more solution and more detergent at the touch of a single button. With the flexibility to easily apply the right scrubbing performance for the job, you'll use less detergent, minimize water use and save on cleaning costs.

### Ideal applications include:

- Routine scrubbing
- Ultra-light to heavy scrubbing
- Entryway cleaning
- Spill cleanup
- Grease removal
- Grout and porous-surface cleaning
- Detergent residue removal (using water only)



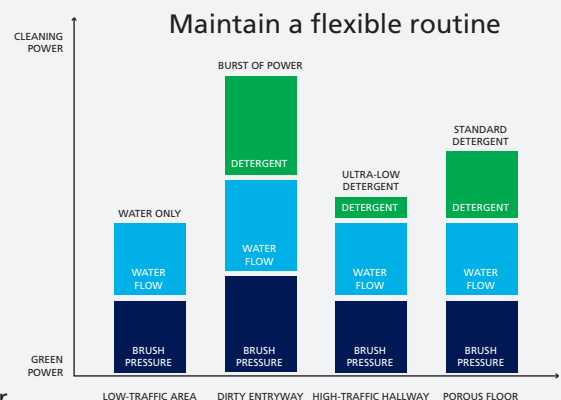
**ecoflex™ system**

#### Green

EcoFlex elevates green cleaning to a new standard – one that promotes good health and hygiene in addition to environmental sustainability. Efficient operation reduces all of the environmental impacts in cleaning—from the obvious (water, detergent) to the not-so-obvious (machine run-time and energy use).

#### Clean

Maintaining a clean, healthy indoor environment for you and the people in your building is hassle-free with EcoFlex. Detergent use, pad pressure and flow rate are right at your fingertips. Operators won't have to hesitate to make adjustments for higher sanitary standards, different surface types or unexpected cleaning challenges.



#### Cost-efficient

Flexibility means doing more with one machine. You'll save time, use fewer machines, and reduce water and detergent costs. Today's increasing demands for cost efficiency are tough to meet. Now you can do more with less.



## Technical Specifications

Models	SC750 ST 26D	SC750 ST 28C	SC800 28D	SC800 34D	SC800 28C	SC800 32C
Scrub System						
Scrub Head Type	Disc	Cylindrical	Disc	Disc	Cylindrical	Cylindrical
Scrub Path	26 in (66 cm)	28 in (71 cm)	28 in (71 cm)	34 in (86 cm)	28 in (71 cm)	32 in (81 cm)
Productivity						
Theoretical Max. @ 3.4 mph (5.5 kph)	32,050 ft <sup>2</sup> /hr (3,000 m <sup>2</sup> /hr)	41,900 ft <sup>2</sup> /hr (3,890 m <sup>2</sup> /hr)	41,900 ft <sup>2</sup> /hr (3,890 m <sup>2</sup> /hr)	50,900 ft <sup>2</sup> /hr (4,730 m <sup>2</sup> /hr)	41,900 ft <sup>2</sup> /hr (3,890 m <sup>2</sup> /hr)	47,900 ft <sup>2</sup> /hr (4,450 m <sup>2</sup> /hr)
Est. Coverage @ 2.3 mph (3.7 kph)	26,300 ft <sup>2</sup> /hr (2,400 m <sup>2</sup> /hr)	25,450 ft <sup>2</sup> /hr (2,630 m <sup>2</sup> /hr)	25,450 ft <sup>2</sup> /hr (2,630 m <sup>2</sup> /hr)	34,400 ft <sup>2</sup> /hr (4,000 m <sup>2</sup> /hr)	25,450 ft <sup>2</sup> /hr (2,630 m <sup>2</sup> /hr)	32,400 ft <sup>2</sup> /hr (3,000 m <sup>2</sup> /hr)
Brush Pad/Driver Assembly	(2) 13 in (33 cm)	(2) 27 in (68.6 cm)	(2) 14 in (35.5 cm)	(2) 17 in (43.0 cm)	(2) 27 in (68.6 cm)	(2) 31 in (78.7 cm)
Scrub Pressure						
Regular Scrub	80 lb (36.3 kg)	80 lb (36.3 kg)	80 lb (36.3 kg)	80 lb (36.3 kg)	80 lb (36.3 kg)	80 lb (36.3 kg)
Extreme Scrub	170 lb (77.1 kg)	–	170 lb (77.1 kg)	170 lb (77.1 kg)	–	–
Scrub Disc/Brush Speed	270 rpm	840 rpm	270 rpm	270 rpm	840 rpm	840 rpm
Solution Flow Rate/Operating Time						
Regular Scrub	0.25 gal/min (0.98 L/min) - 91 minutes			0.25 gal/min (0.98 L/min) - 101 minutes		
Heavy Scrub	0.50 gal/min (1.93 L/min) - 48 minutes			0.50 gal/min (1.93 L/min) - 54 minutes		
Extreme Scrub	0.65 gal/min (2.46 L/min) - 36 minutes			0.65 gal/min (2.46 L/min) - 40 minutes		
Solution Tank	21 gal (80 L)	21 gal (80 L)	25 gal (95 L)	25 gal (95 L)	25 gal (95 L)	25 gal (95 L)
Solution Control						
Standard Models	Gravity feed with pulsating solenoid technology and liquid level sensing					
ST Models	Gravity feed with pulsating solenoid technology					
Recovery System						
Recovery Tank	21 gal (80 L)	21 gal (80 L)	25 gal (95 L)	25 gal (95 L)	25 gal (95 L)	25 gal (95 L)
Vacuum Fan						
Motor	0.66 hp (490 W)					
Stages	3-Stage					
Waterlift	51.2 in (130 cm)					
Propulsion and Power System						
Speed Control						
Standard Model	Standard Models - Safety paddle system infinity variable with maximum speed limiter settings					
ST Models	ST Models - ON/OFF palm switches with maximum speed limiter settings					
Propel Speed						
Transport	3.6 mph (5.8 km/h)					
Scrubbing	3.4 mph (5.5 km/h)					
Gradeability						
Scrubbing & Transport - (Full)	8.5°/14.9%					
Trailer Ramp (Empty)	10.0°/17.6%					
Batteries (24 V System)	(4) 6 V batteries: 242 Ah Wet or 310 Ah Wet or 312 Ah maintenance-free (AGM)					
Battery Charger						
Standard Model	24 Volt Shelf or Onboard Charger					
ST Model	Shelf Charger Only					
Drive Wheels	(2) 10 in (25.4 cm) diameter solid, gray - non-marking polyurethane					
Dimensions / Weight / Sound						
Length Standard Model	58.4 in (148 cm)	58.5 in (149 cm)	59.9 in (152 cm)	63.3 in (161 cm)	58.5 in (149 cm)	61.7 in (157 cm)
Length ST Model	56.6 in (144 cm)	56.8 in (144 cm)	58.1 in (148 cm)	61.5 in (156 cm)	56.8 in (144 cm)	60.0 in (152 cm)
Width Without Squeegee	28.8 in (73 cm)	30.8 in (78 cm)	30.8 in (78 cm)	36.8 in (93 cm)	30.8 in (78 cm)	34.8 in (88 cm)
Width With Squeegee	35.5 (90 cm)	35.5 (90 cm)	41.5 in (105 cm)	41.5 in (105 cm)	41.5 in (105 cm)	41.5 in (105 cm)
Height Standard Model	45.1 in (115 cm)	45.1 in (115 cm)	45.1 in (115 cm)	45.1 in (115 cm)	45.1 in (115 cm)	45.1 in (115 cm)
Height ST Model	44.5 in (113 cm)	44.5 in (113 cm)	44.5 in (113 cm)	44.5 in (113 cm)	44.5 in (113 cm)	44.5 in (113 cm)
Dry Weight Without Batteries	347 lb (158 kg)	347 lb (158 kg)	373 lb (174 kg)	373 lb (174 kg)	373 lb (174 kg)	373 lb (174 kg)
Dry Weight Including Std. Batteries	615 lb (280 kg)	615 lb (280 kg)	641 lb (291 kg)	641 lb (291 kg)	641 lb (291 kg)	641 lb (291 kg)
Minimum Aisle Turn	62 in (1.57 m)	65 in (1.65 m)	63 in (1.6 m)	66 in (1.68 m)	65 in (1.65 m)	66 in (1.68 m)
Sound Level (IEC 60704-1)	61 dB (A) @ Operators position					

Specifications are subject to change without notice.



14600 21st Avenue North  
Plymouth, MN 55447-3408  
www.advance-us.com  
Phone 800-214-7700  
Fax 800-989-6566

240 Superior Boulevard  
Mississauga, Ontario, Canada L5T 2L2  
www.nilfisk-advance.com  
Phone 800-668-8400  
Fax 800-263-5111

Ask about our leasing options.

©2010 Nilfisk-Advance, Inc. Form L3222A 1-20-11



 **Advance**  
Industrial Cleaning Equipment

A Nilfisk-Advance Brand

www.advance-us.com/industrial