

IMPORTANT MANUAL

DO NOT THROW AWAY

Mission:
POSSIBLE
Cleaning Assessment Program

UPKEEPER®
VOYAGER TURBO



Patent Pending

INDUSTRIAL COMMERCIAL PORTABLE CLEANING SYSTEM

It's Like Two Machines In One!



Use the Voyager® Turbo Portable
with the giant 4" diameter intake tube...

OR

... in less than a minute, switch to the 2 1/2"
diameter hose with attachments.



**Model 9500 Portable
Instruction Manual and Parts List**



IMPORTANT SAFETY INSTRUCTIONS

When using an electrical appliance, basic precautions should always be followed, including the following:

READ ALL INSTRUCTIONS BEFORE USING THE UPKEEPER® TURBO FAN COMMERCIAL BLOWER CLEANER.

WARNING: To reduce the risk of fire, electric shock, or injury:

1. Do not leave UPKEEPER® when plugged in. Unplug from outlet when not in use and before servicing.
2. Do not use on wet surfaces. Do not expose to rain. Store indoors.
3. Use only as described in this manual. Use only manufacturer's recommended attachments.
4. Do not use with damaged cord or plug. If appliance is not working as it should, has been dropped, damaged, left outdoors, or dropped into water, return it to a service center.
5. Do not pull or carry by cord, use cord as a handle, close a door on cord, or pull cord around sharp edges or corners. Do not run UPKEEPER® over cord. Keep cord away from heated surfaces.
6. Do not unplug by pulling on cord. To unplug, grasp the plug, not the cord.
7. Do not handle plug or UPKEEPER® with wet hands.
8. Do not put any object into openings. Do not use with any opening blocked; keep free of dust, lint, litter, or debris and anything that may reduce air flow.
9. Keep hair, loose clothing, fingers, and all parts of body away from openings and moving parts.
10. Do not pick up anything that is burning or smoking, such as cigarettes, matches, or hot ashes.
11. Do not use without collection bag in place.
12. Turn off all controls before unplugging.
13. Use extra care when cleaning on stairs.
14. Do not use to pick up flammable or combustible liquids such as gasoline or use in areas where they may be present.

CONNECT TO A PROPERLY GROUNDED OUTLET ONLY. SEE GROUNDING INSTRUCTIONS.

GROUNDING INSTRUCTIONS

The UPKEEPER® must be grounded. If it should malfunction or break down, grounding provides a path of least resistance for electric current to reduce the risk of electric shock. The UPKEEPER® is equipped with a cord having an equipment-grounding conductor and grounding plug. The plug must be inserted into an appropriate outlet that is properly installed and grounded in accordance with all local codes and ordinances.

WARNING: Improper connection of the equipment-ground conductor can result in a risk of electric shock. Check with a qualified electrician or service person if you are in doubt as to whether the outlet is properly grounded. Do not modify the plug provided with the appliance.

IF THE PLUG WILL NOT FIT THE OUTLET; HAVE A PROPER OUTLET INSTALLED BY A QUALIFIED ELECTRICIAN.

SAVE THESE INSTRUCTIONS

GENERAL INSTRUCTIONS

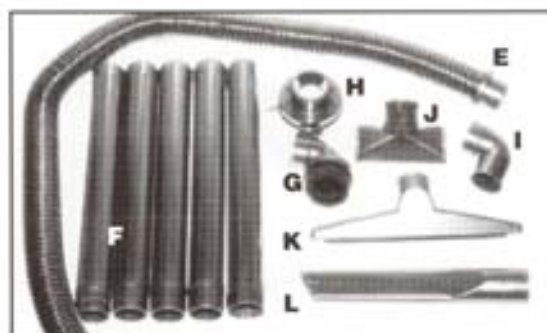
The Upkeeper® Voyager® Turbo portable litter and waste collection system provides the fastest, safest way to effectively clean inaccessible areas and solve difficult cleaning problems quickly and easily.

We've combined turbine fan technology with a lightweight portable design. Our customers report cleaning time is reduced significantly and efficiency is improved dramatically using the Voyager® Turbo system.

It is especially useful for cleaning overhead, including light fixtures, sprinkler heads, feed rails, chains, air vents, air conditioner ducts and screens, automatic control boxes, as well as floors, and under and around equipment in normally "hard to clean" areas.

Please read the operations manual thoroughly for detailed instructions on how to use the Upkeeper® Voyager® Turbo properly.

Do not attempt to clean up broken glass, nails, or sharp objects that could pierce the bag and cause personal injury and/or damage to the unit. Nuts, bolts, stones, etc. should not break the impact resistant impeller, but might damage the housing, or bag. Do not use near flammable or combustible liquids, gases or dusts.



- A.** Shoulder strap with pad for maximum comfort during operation.
- B.** Oversized 3 cubic foot debris collection bag.
- C.** Voyager® Turbo Fan power unit moves air at 500 CFM!
- D.** 4" Diameter Intake Tube for scraps and bulky waste.
- E.** 2 1/2" diameter 5 foot long flexible hose, for use with 2 1/2" diameter wands and attachments.
- F.** Five 2 1/2" diameter extension wands totalling eight feet in length. (Extra wand extensions may be ordered separately to reach as high as 25 feet without loss of cleaning power). Lets you clean overhead without the danger of using a ladder.
- G.** Dusting brush.
- H.** Hose adaptor assembly, for use with 2 1/2" diameter hose.
- I.** Elbow attachment.
- J.** Debris tool.
- K.** Floor tool.
- L.** Crevice tool.
- M.** Tool Caddy.

A complete set of attachments to clean ceilings, overhead fixtures, walls, machinery, and floors is included with your Voyager Turbo from Upkeeper.

OPERATING INSTRUCTIONS

Place the power switch in the **OFF** position. Check to make sure bag is clean, empty, attached securely to the discharge chute and zipped closed. Safety glasses and ear plugs are recommended for use during operation of the Voyager® Turbo.

Remove inlet cover by releasing locking pin. Rotate inlet cover in a counter clockwise motion and pull. Attach either the 4" diameter intake hose, or the 2-1/2" diameter reducer by pulling locking pin and inserting attachment with raised tab into slot located on inlet adapter. Rotate attachment in a clockwise motion and release locking pin. If using 2-1/2" diameter reducer, connect the five foot long 2-1/2" diameter flexible hose to reducer opening, add extension wands and attach the appropriate cleaning tool to the hose or wands. Any of the 2-1/2" attachments can be used in any combination with the adapter and/or hose. A twisting action will provide a friction fit to secure the hose, wands and tools. Note that the swivel hose end should be used at the end of extension wands or cleaning tool!

Attach bag and strap to machine. Put shoulder strap over head and on right shoulder, bag rests on back. Power

unit rests on left hip. Adjust length of strap for comfortable use. Strap should be long enough for unit to rest on hip when using smaller attachments, and lower, at arm's length in front when using 4" diameter intake.

Plug Voyager, Turbo unit into extension cord, and plug cord into appropriate voltage outlet. While a 50 ft. extension cord is provided with your Voyager, Turbo, up to 200 ft. of heavy duty extension cord may be used without loss of cleaning power. Turn power switch **ON**.

When using the 4" diameter intake tube, slowly sweep tube from left to right to pick up debris from open areas. Using motor handle, point machine down, so tube opening is at right angle to floor with maximum opening width. **(See illustrations below.)**

Hold motor handle firmly and point intake tube in the direction of the scrap and waste when cleaning under machinery and furniture. Do not overload intake tube: cutting off airflow will stop pick up.

When using the 2 1/2" attachments, shorten strap length so motor rests on hip, with weight supported by shoulder

strap. Place both hands on extension wands or flexible hose, to provide maximum operator control and cleaning effectiveness.

The Voyager, Turbo comes with 5 extension wands, totalling 8 feet for cleaning ceilings, fixtures, tubing, etc. overhead without the use of a ladder. With additional wands you can clean up to 25 feet overhead without loss of airflow and cleaning power. (Each wand is 20" long.)

Elbow and dusting brush are useful in combination with extension wands for cleaning light fixtures and sprinkler heads.

The 2 1/2" diameter flexible hose with attachments and/or extension wands can be used for cleaning machinery, equipment, table tops, etc. as well as above, over, around and under these same items.

During cleaning, when bag fills, shut off machine, unzip bag and empty it. Packing bag tightly with collected material will reduce airflow and cleaning efficiency. Shake bag when emptying to reduce buildup of fine dust that may reduce airflow through collection bag.

For 100-115 V Units:

Extension Cord Selection Instructions

- For units not provided with an extension cord, a proper extension cord shall be selected before using this appliance. The cord set shall be Listed and consisted of Type SJT, three-conductor flexible cord, a minimum 1.83 meters (6 feet) in

length, grounding-type attachment plug rated 125V, min. 10A. The cord conductors shall be minimum 18 AWG.

For 220-240 V Units:

Extension Cord Selection Instructions

- For units not provided with an extension cord, a proper extension cord shall be selected before using this appliance. The cord set shall be Listed and consist of Type SJT, three-conductor flexible cord, a

minimum 1.83 meters (6 feet) in length, grounding-type attachment plug rated 250 V, min 4 A. The cord conductors shall be minimum 18 AWG.



Wrong Way

Floor Surface



Right Way

IMPORTANT MOTOR & SAFETY FEATURES

The Voyager® Turbo has several important safety features.



Top View of Turbo Power Unit.



Frontal View of Turbo Power Unit.

Before operating, attach bag to power unit. Slide neck of bag over discharge chute and secure with strap between lip on chute and bracket where chute is joined to machine.

Connect strap to grommet strap on bag and ring on handle. Lengthen shoulder strap to enable operator to control intake tube comfortably with handle at arm's length. (See photo on cover)

Shorten shoulder strap completely when using 2 1/2" diameter hose, wands and attachments so that power unit rests comfortably on left hip. This gives operator use of both hands in directing extension wands in cleaning procedures.



Inlet Cover

The inlet cover is for use when unit is used as a blower. To install or remove inlet cover, pull locking pin and rotate cover either in a clockwise or counter clockwise motion and release locking pin. As a safety precaution, the motor will not operate without inlet cover, 4" diameter coupling, or 2-1/2" reducer in place.



On/Off Switch

On/Off power switch for easy operator control. Always switch the power off before disconnecting electrical cord from power outlet.



Locking Pin

Used to secure inlet cover, 4" diameter coupling, or 2-1/2" diameter reducer. Pull pin out and rotate attachments during installation or removal.



Discharge Chute

Collection bag straps securely behind lip of chute. Never operate the Voyager Turbo without the bag firmly in place.



Limit Switch

The Limit Switch prevents motor from operating without the inlet cover or an operating attachment firmly in place. **Do not attempt to manually override limit switch.**



Reset Button

Overload Protection. If the motor stops due to overload, unplug from power outlet, remove the source of overload (usually an overly large piece of trash or debris). Then reconnect power and push the reset button.

MAINTENANCE

The Upkeeper® Voyager® Turbo is virtually maintenance free. However, as with any valuable tool, it should be handled with care, and given care routinely to assure proper function.

If machine is used to pick up lint, litter or debris that may be mixed with oils or sticky liquid of any kind, wipe out fan chamber immediately after use to prevent build up in motor area.

If motor speed becomes erratic, or makes a sputtering noise, carbon brushes are worn and should be replaced immediately (*see instructions and ordering parts information.*)

When lint, cotton dust and fiber cleanup is constant, clean machine thoroughly by removing the black motor cap and blowing air through the slots of the transparent end bell. This will prevent the accumulation of fine lint and fibers in the motor housing which could reduce or restrict the performance of the power unit.

If the blower fan chamber becomes coated with oily residue, it may restrict the flow of dirt or debris. Turn motor off, disconnect cord, remove upper blower housing and scrape build-up from chamber wall.

IMPORTANT: For maximum performance, empty bag frequently. If airflow seems reduced, pores in the bag fabric could be clogged with fine dust particles. Clean the bag by turning empty bag inside out and shaking it vigorously in an open area. When shaking out is no longer effective, machine wash bag, using mild detergent and warm water, and air dry before using again.

TROUBLE SHOOTING

Problem	Likely Reason	Solution
Unit will not start	Interrupted current supply	Press reset button and check to see that inlet cover, 4" diameter coupling, or 2-1/2" diameter reducer is locked securely in place. Check connections of plug extension cord and socket, as well as extension cord and cord leading from motor.
Airflow is reduced	Pores in the bag are clogged with fine dust particles	Turn bag inside out and shake vigorously. Wash bag in washing machine, using mild detergent and warm water, and air dry before using again.
Motor speed is erratic	Carbon brushes are worn	Replace brushes immediately.

TO REPLACE CARBON BRUSHES

1. **TURN UNIT OFF AND UNPLUG POWER CORD BEFORE SERVICING.**
2. Keep all screws tight. Watch for motor vibration which is generally a warning of trouble.
3. When motor speed is erratic and makes a sputtering noise this is an indication that the carbon brushes are worn. Replace immediately.
4. To replace brushes: remove the two holding screws (A) and black motor cap (B). Unscrew transparent plastic brush cap (D) and remove brushes. Insert new brushes and replace brush cap. Repeat on other side.

IMPORTANT: When installing the new split carbons for maximum brush life, the softer gray side of the brush needs to be on the trailing edge of motor rotation. (See fig. 2)

5. In cases where lint and fiber clean up is constant, you should remove the black motor cap and blow air through the slots of the transparent end bell (C) down the inside of the motor housing. This will prevent the accumulation of lint and fiber in the motor housing which can reduce or restrict the performance of the vacuum.
6. Occasionally, the aluminum blower housing chamber may become clogged with dirt, debris and litter. Turn motor off, disconnect cord, scrape build-up from casting wall.
7. **FOR MAXIMUM PERFORMANCE, EMPTY BAG FREQUENTLY.**

To clean bag: Take outdoors, empty contents, then turn bag inside out and shake vigorously. When necessary, bag may be machine washed, using mild detergent and warm water, and air dried.

WARNING

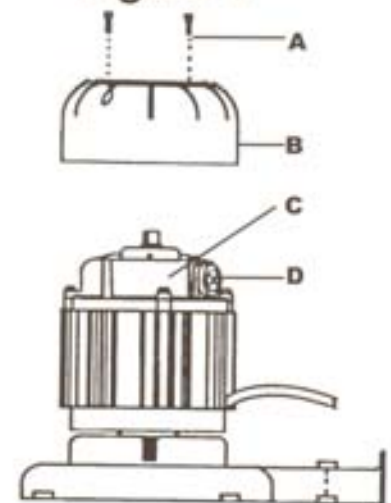
Electric shock could occur if used on wet surfaces. Do not expose to rain.

Store indoors.

Fan inlet must have inlet cover, 4" diameter coupling or 2-1/2" diameter reducer installed before motor will operate.

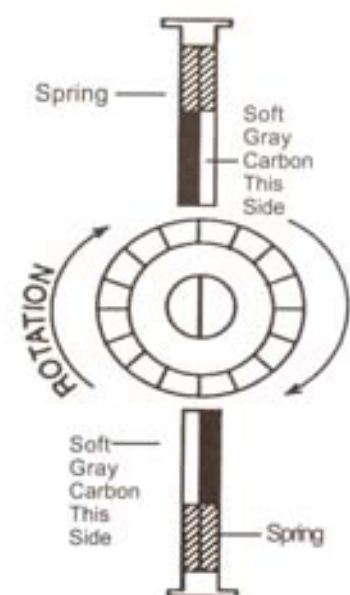
Do not attempt to vacuum broken glass or glass objects. To do so could result in severe personal injury and/or damage to unit.

Figure 1



- A. Holding screws
- B. Motor cover
- C. End Bell
- D. Brush cap

Figure 2



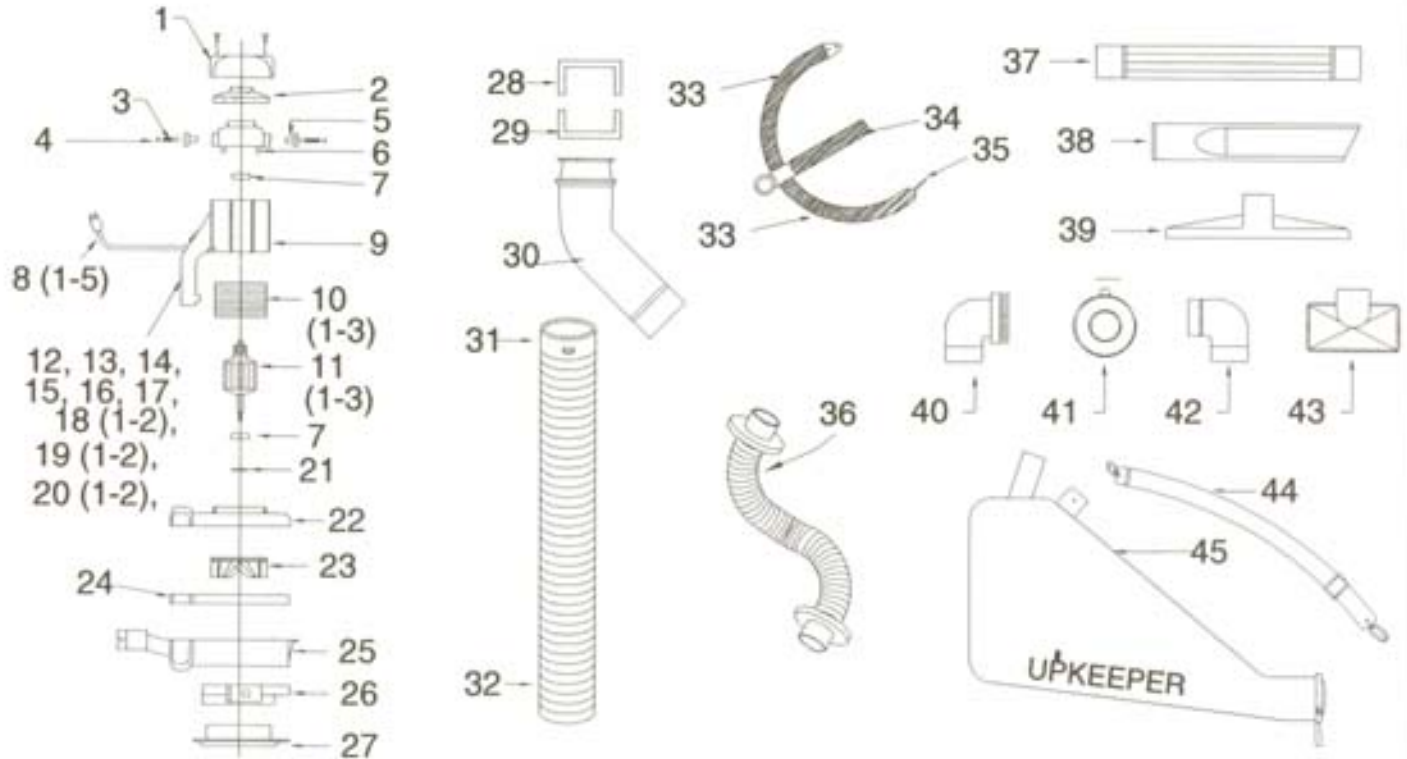
PARTS LIST ADDENDUM FOR

JULY 1997

PHONE: 704-545-7040
FAX: 704-545-5834

U.S. TOLL FREE:
800-451-3466

MODEL 9500-00 100 VOLT
MODEL 9500-10 110/115 VOLT
MODEL 9500-20 220/240 VOLT
MODEL 9500-20-E 220/240 VOLT EUROPEAN/UK
MODEL 9500-20-C 220/240 VOLT CHINA/AUSTRALIA
MODEL 9500-10-E 100 VOLT EUROPEAN



SEE PAGE 9 FOR PARTS LIST

MODEL 9500-00	—	100 VOLT	_____	USE A ITEMS
MODEL 9500-10	—	110/115 VOLT	_____	USE B ITEMS
MODEL 9500-20	—	220/240 VOLT	_____	USE C ITEMS
MODEL 9500-20-C	—	220/240 VOLT EUROPEAN/UK	_____	USE D ITEMS
MODEL 9500-20-E	—	220/240 VOLT CHINA/AUSTRALIA	_____	USE E ITEMS
MODEL 9500-10-E	—	100 VOLT EUROPEAN	_____	USE F ITEMS

REPLACEMENT MOTOR ASSEMBLIES FOR 9500-XX MODELS ARE LISTED BELOW

FOR MODELS	PART #	DESCRIPTION
A	07-00-050-99	MOTOR ASS'Y 100V
B F	07-00-051-99	MOTOR ASS'Y 110/115V
C D E	07-00-052-99	MOTOR ASS'Y 220/240V

EXTENSION CORDS FOR 9500-XX MODELS ARE LISTED BELOW

FOR MODELS	PART #	DESCRIPTION
A B	07-00-035-06	EXT CORD 100-115 V
C	07-00-036-06	EXT CORD 220/240 V
D F	07-00-037-06	EXT CORD 220 V EURO/UK
E	07-00-038-06	EXT CORD 220 V CHINA/AUSTRALIA

PARTS LIST ADDENDUM

PHONE: 704-545-7040
 FAX: 704-545-5834
 U.S. TOLL FREE:
 800-451-3466

FOR MODELS	ITEM #	PART #	DESCRIPTION
ALL	1	09-00-015-03	MOTOR CAP
ALL	2	09-00-016-07	MOTOR CAP SCREEN
ALL	3	09-00-005-01	SPLIT CARBON MOTOR BRUSH
ALL	4	08-00-055-03	BRUSH CAP
ALL	5	08-00-057-99	BRUSH HOLDER ASS'Y
ALL	6	08-00-070-03	END BELL
ALL	7	07-00-005-01	BEARING
A	8-1	09-00-072-06	CORD 18", JAPAN 100V
B	8-2	09-01-105-06	CORD 18", 115V
C	8-3	09-01-106-06	CORD 18", 220V
D F	8-4	09-01-107-06	CORD 18", UK
E	8-5	09-00-071-06	CORD 18", CHINA / AUS.
ALL	9	09-00-010-02	MOTOR HOUSING
A	10-1	08-00-006-01	FIELD 100V
C D E	10-2	08-00-016-01	FIELD 220/240V
B F	10-3	08-00-026-01	FIELD 110/115V
A	11-1	08-00-005-01	ARMATURE 100V
C D E	11-2	08-00-015-01	ARMATURE 220/240V
B F	11-3	08-00-025-01	ARMATURE 110/115V
ALL	12	11-01-230-06	LIMIT SWITCH
ALL	13	09-00-065-06	RT ANGLE QUICK DISCONNECT
ALL	14	09-00-060-06	QUICK DISCONNECT
ALL	15	07-00-030-06	RING TONGUE TERMINALS
ALL	16	09-00-070-06	FIRM GROMMET
ALL	17	10-02-095-03	SWITCH COVER
A B F	18-1	09-00-050-06	CIRCUIT BREAKER 10 AMP
C D E	18-2	09-00-051-06	CIRCUIT BREAKER 4 AMP
A B C E	19-1	10-02-145-06	STRESS RELIEF ALL BUT UK/EURO
D F	19-2	10-02-146-06	STRESS RELIEF- UK/EURO
A B F	20-1	09-00-040-06	ROCKER SWITCH 100-120 V
C D E	20-2	09-00-041-06	ROCKER SWITCH 200-240 V
ALL	21	07-00-010-01	BEARING RETAINING RING
ALL	22	07-00-015-02	UPPER BLOWER HOUSING
ALL	23	08-00-042-99	IMPACT RESISTANT IMPELLER
ALL	24	10-02-120-03	SPACER RING
ALL	25	07-01-055-02	LOWER BLOWER HOUSING
ALL	26	12-02-025-99	INLET ADAPTER ASS'Y
ALL	27	12-02-010-03	INLET COVER
ALL	28	10-02-156-03	DISCHARGE CHUTE BRKT, LG
ALL	29	10-02-157-03	DISCHARGE CHUTE BRKT, SH
ALL	30	10-04-166-03	DISCHARGE CHUTE
ALL	31	12-02-020-03	HOSE COUPLING
ALL	32	12-01-050-99	4" PORTABLE TUBE ASS'Y
ALL	33	07-01-090-07	HANDLE GRIP, LONG
ALL	34	07-01-091-07	HANDLE GRIP, SHORT
ALL	35	07-01-093-99	HANDLE ASS'Y
ALL	36	07-01-121-99	2.5" DIA 5' LONG HOSE ASS'Y
ALL	37	07-02-185-09	2.5" VACUUM WAND 20" LG
ALL	38	07-02-210-09	2.5" CREVICE TOOL
ALL	39	07-02-209-99	2.5" FLOOR TOOL
ALL	40	07-02-200-09	2.5" ELBOW DUSTING BRUSH
ALL	41	12-02-015-03	2.5" HOSE ADAPTER/REDUCER
ALL	42	07-02-195-09	2.5" ELBOW
ALL	43	07-02-190-09	2.5" DEBRIS TOOL
ALL	44	07-01-115-09	SHOULDER STRAP
ALL	45	10-00-005-09	COLLECTOR BAG-UNIVERSAL

Cleaning & Maintenance History

Serial Number # _____

Date	Serviced By	Comments

FIVE YEAR LIMITED WARRANTY

The Upkeeper® Voyager® Turbo industrial/commercial cleaning product is warranted to be free from defects in materials and workmanship under normal use and service for a period of sixty (60) months from date of purchase, when operated and maintained in accordance with Upkeeper's maintenance and operating instructions. All die-cast parts also have a five (5) year warranty against any manufacturer's defect. This does not cover damage due to misuse or abuse of the product. It does not cover normal wear parts such as electrical cable, motor brushes, hoses, attachments, or bags.

If a difficulty develops with the product, in the continental U.S., you should:

a) Contact the nearest authorized Upkeeper distributor or contact the **Upkeeper Corporation at P.O. Box 23480, Charlotte, NC 28227. Call us toll free at 1-800-451-3466** for instructions.

b) If required, return the product to

Upkeeper Corporation at 7231 Matthews-Mint Hill Road, Charlotte, NC 28227.

Transportation charges to the repair location must be prepaid by the purchaser.

c) Upkeeper will repair the product and/or replace any defective parts without charge within a reasonable time after receipt of the product and ship it prepaid to sender.

Upkeeper's liability under this warranty is limited to repair of the product and/or replacement of parts and is given to purchasers in lieu of all other remedies, including incidental and consequential damages.

There are no express warranties other than those specified herein. There are no warranties which extend beyond the description on the face hereof. No warranties, including but not limited to warranty of merchantability, shall be implied.

Return the Warranty Registration Card to assist Upkeeper in providing the support you expect for your new Upkeeper cleaning system.

IMPORTANT: Record machine model number and have part number ready when ordering replacement parts.

Voyager® Turbo Serial # _____ Purchased from: _____

Model 9500 _____ Address: _____

Purchase Date: _____ Phone Number: _____

Cleaning is Safe, Fast, and Easy With



To order parts, or for more information contact:

**Upkeeper Corporation
P.O. Box 23480
Charlotte, NC 28227**

**In U.S.A., Toll Free 1-800-451-3466
Phone (704) 545-7040 Fax (704) 545-5834**

Printed in USA

Mission:
POSSIBLE
Cleaning Assessment Program



We declare under our sole responsibility that this product is in conformity with the following standards or standardized documents: **EN 55014, EN 60555, EN 55104** in accordance with the regulations: **89/336/EEC, 92/31/EEC**

World Headquarters

Upkeeper Corporation
P.O. Box 23480
Charlotte, NC 28227 - USA
Toll Free in USA 1-800-451-3466
PHONE: 1-704-545-7040
FAX: 1-704-545-5834
email: info@upkeeper.com
www.upkeeper.com

Printed in USA

VISIT OUR WEB SITE AT:
www.upkeeper.com

01-01-084-08 REV. 1 8/97