

All-Purpose Matador™ 17/20



PARTS LIST

Advance MODELS 56172500(17/115V)

56172510(17/100V), 56172600(20/115V) 56172505(17/230V/OBS)

56172605(20/230V/OBS)



Advance
by Nilfisk-Advance

revised 8/08 FORM NO. 56042113

TABLE OF CONTENTS

07-5

All-Purpose Matador™ 17 / 20

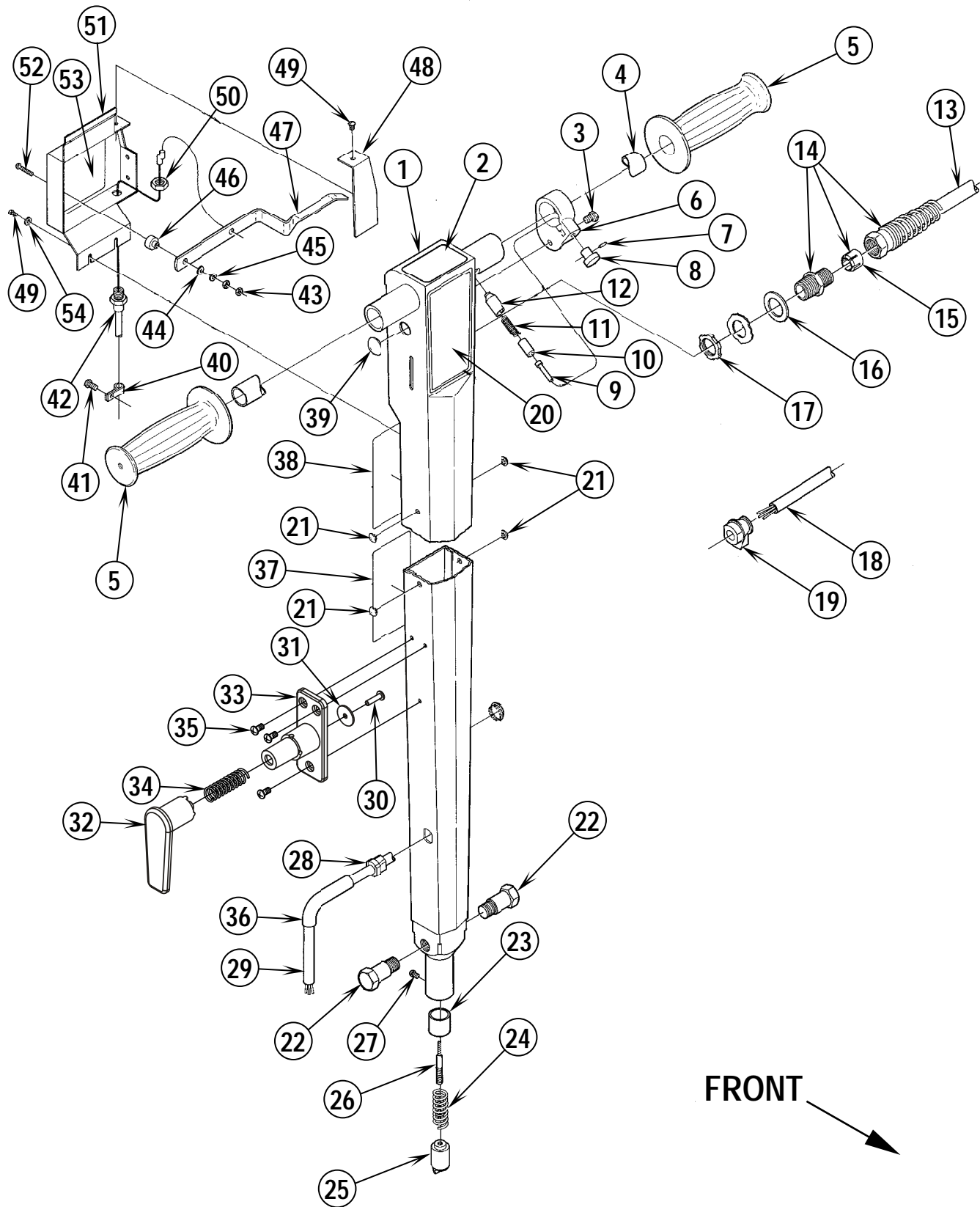
1

DESCRIPTION	PAGE
HANDLE ASSEMBLY-FRONT VIEW (BEFORE SN1934919)	2-3
HANDLE ASSEMBLY-FRONT VIEW (AFTER SN1934918)	4-5
HANDLE ASSEMBLY-REAR VIEW (BEFORE SN1934919)	6-7
HANDLE ASSEMBLY-REAR VIEW (AFTER SN1934918)	8-9
BASE ASSEMBLY	10-11
TANK ASSEMBLY	12-13
SHAMPOO BRUSH AND PAD HOLDERS	14-15
WIRING DIAGRAMS.....	16-17

WHEN ORDERING PARTS

- * Use the 8 digit numbers from the "Ref. No." columns in this parts list.
- * Specify the model and serial number of the machine.
- * Use the space below to record the model and serial number for future reference.

Model _____ Serial No. _____



HANDLE ASSEMBLY-FRONT VIEW (BEFORE SN1934919)

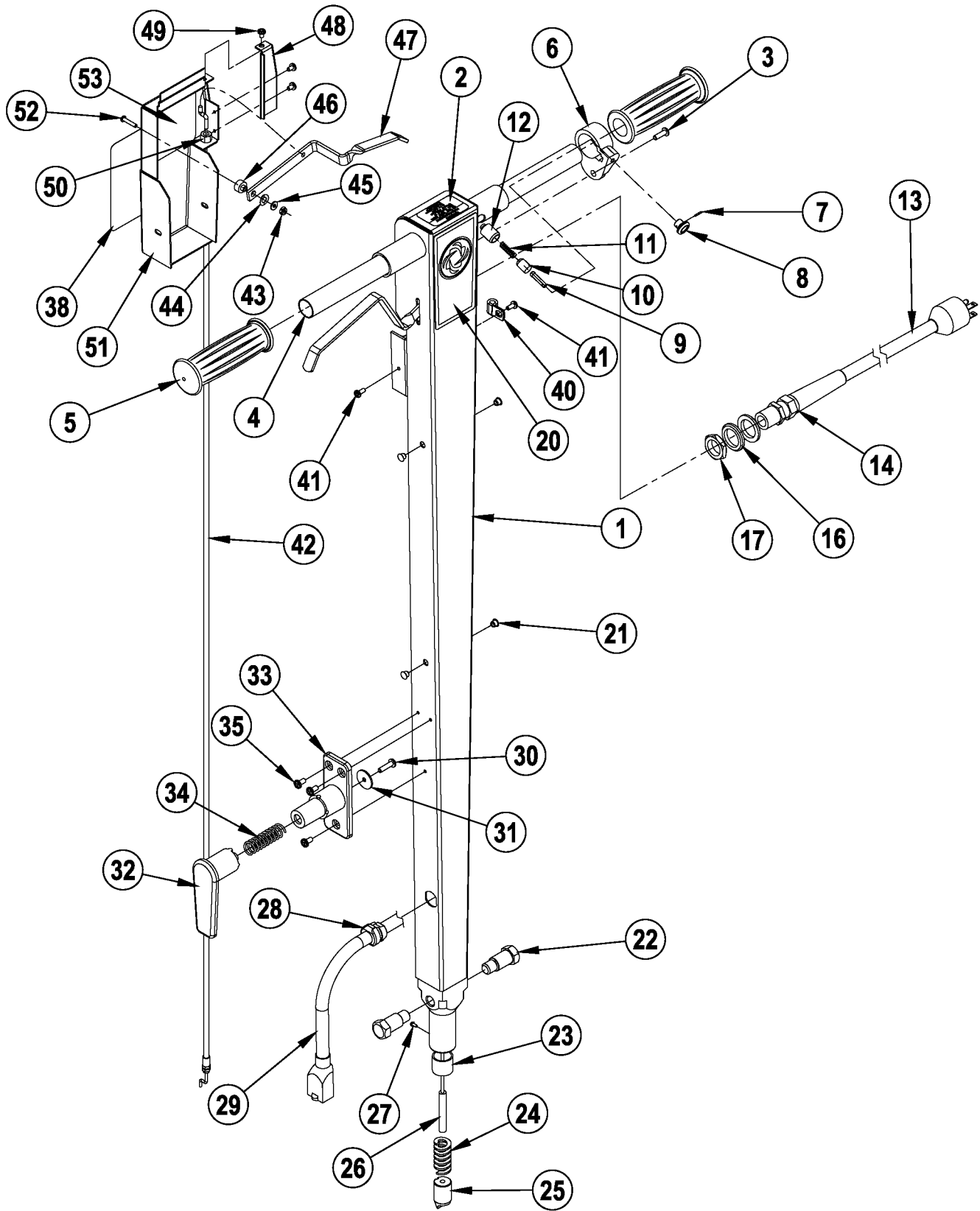
07-5

All-Purpose Matador™ 17 / 20

3

Item	Ref. No.	Qty	Description	Item	Ref. No.	Qty	Description
	56172322	1	Handle Assembly 100V	28	56382817	1	Strain Relief 100V, 115V
	56172300	1	Handle Assembly 115V		56163015	1	Strain Relief 230V
	56172301	1	Handle Assembly 230V	29	56171128	1	Cord Set 100V, 115V
1	56172274	1	Handle 100V, 115V		56172331	1	Cord Set 230V
	56172332	1	Handle 230V		56171112	1	Cord Hook Assembly (#30-34)
2	56017024	1	Decal, Warning, Japanese 100V	30	56009005	1	Scr, Pan Phil SS Type B 10-24 x .75
	56014924	1	Decal, Warning 115V	31	56009096	1	Wsh Flt .193 x .875 x .060
3	56001854	1	1/4-20 x 1/2 Screw	32	56171110	1	Arm
*	56001827	1	1/4-20 Whiz Nut	33	56171111	1	Base
4	56172198	1	Handle Tube (silver)115V,230V	34	56380732	1	Spring
			Before Serial # 279789	35	56009030	3	Scr, Pan Phil Thd Form 10-24 x .38
	56171343	1	Handle Tube (yellow) 100V,115V	36	56300602	1	Tube
			After Serial # 279788	37	56014204	1	Decal, Caution 230V
	56183498	1	Handle Tube (yellow) 230V	38	56017014	1	Decal, Warning, Japanese 100V
			After Serial # 279788		56014828	1	Decal, Warning 115V
5	56388545	2	Hand Grip 100V, 115V		56014033	1	Decal, Caution 230V
	56900248	2	Hand Grip 230V	39	56322231	2	Button Plug 230V
	56172321	1	Collar Assembly (#6-9)	40	56172139	3	P-Clip
6	56172275	1	Collar	41	56002549	3	#10-32 x 3/8 HP-5 Screw
7	56003129	1	Spring Pin		56172314	1	Lever Assembly 100V, 115V
8	56201405	1	Knob				(#42-52)
9	56172217	1	Pin		56172334	1	Lever Assembly 230V (#42-52)
10	56171279	1	Plunger	42	56172128	1	Cable
11	56201448	1	Spring 100V, 115V	43	56002061	2	#6-32 Nut
	56578222	1	Spring 230V	44	56002006	1	#6 Flat Washer
12	56171281	1	Bushing	45	56001839	1	#6 Lock Washer
13	56180116	1	Cord Set 100V	46	56172130	1	Bushing
	56524069	1	Cord Set 115V	47	56172126	1	Lever
14	56109630	1	Strain Relief 100V, 115V	48	56172293	1	Cover
15	56109632	1	Brass Insert For 56109630	49	56002534	5	#8-32 x 1/4 HP-5 Screw
16	56171093	1	Washer 100V, 115V	50	56001976	1	1/4-20 Nut
17	56171094	1	Nut 100V, 115V	51	56172290	1	Cover 100V, 115V
18	56183587	1	Cord Set 230V		56172336	1	Cover 230V
19	56183586	1	Strain Relief 230V	52	56002002	1	#6-32 x 3/4 Screw
20	56016439	1	Decal, Handle	53	56014326	1	Decal, Important
21	56153699	4	Button Plug	54	56002140	2	#8 Flat Washer
22	56171336	2	Pivot Bolt				
23	56171269	1	Bushing				
24	56171361	1	Spring				
25	56171132	1	Plunger				
26	56171373	1	Cable				
27	56001851	1	#4 x 40 x 1/4 Screw				

* = Not Shown



HANDLE ASSEMBLY-FRONT VIEW (AFTER SN1934918)

07-5

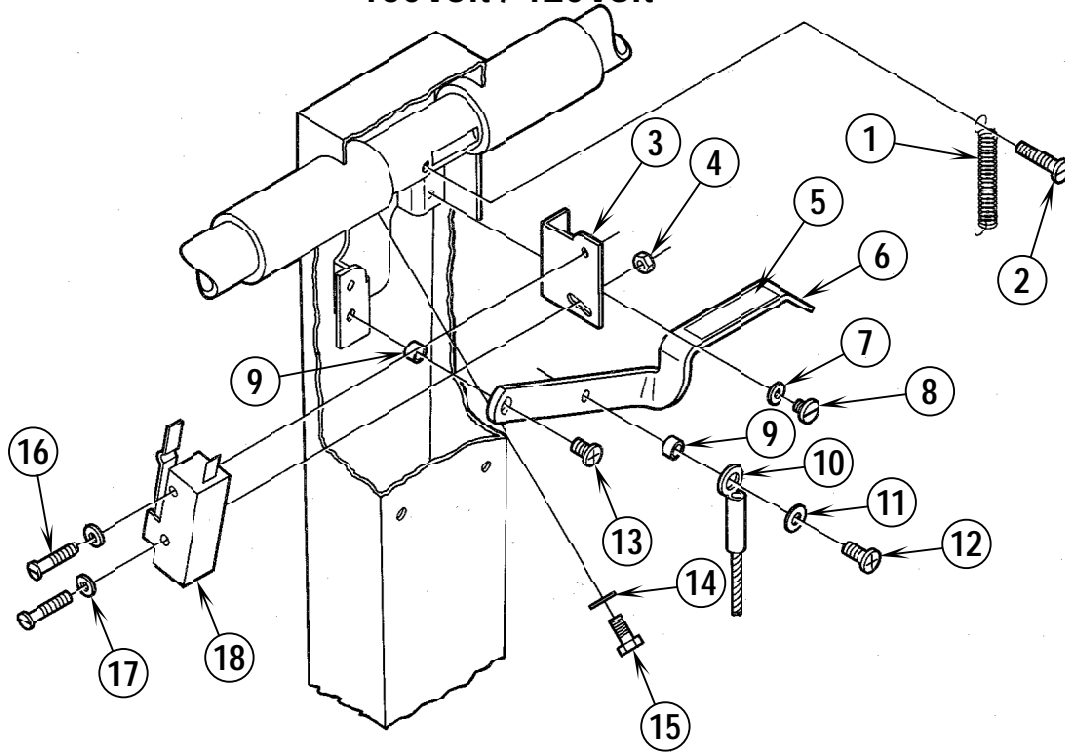
All-Purpose Matador™ 17 / 20

5

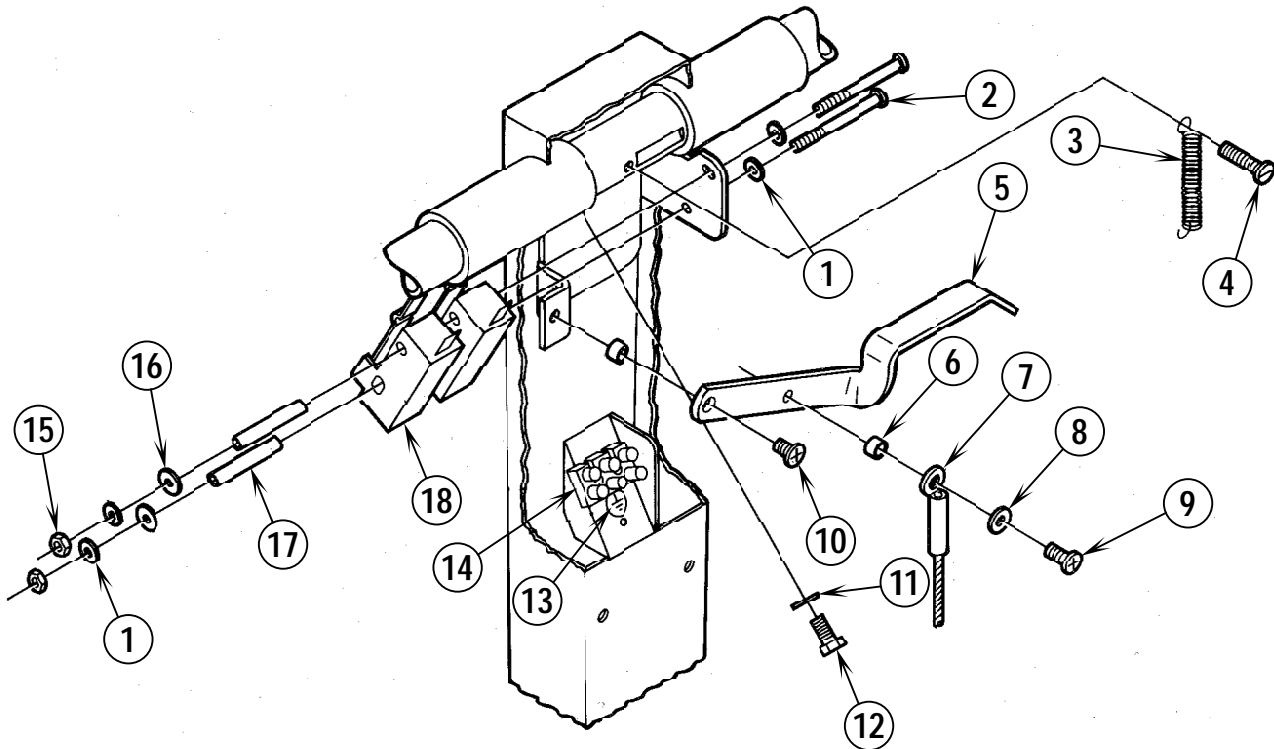
Item	Ref. No.	Qty	Description	Item	Ref. No.	Qty	Description
	56172085	1	Handle Assembly 115V	28	56382818	1	Strain Relief
1	56172274	1	Handle Weldt.	29	56172083	1	Cord Set
2	56014924	1	Decal, Warning 115V		56171112	1	Cord Hook Assembly (#30-34)
3	56002124	1	Scr, Pan Phil 10-24 x .62	30	56009005	1	Scr, Pan Phil SS Type B 10-24 x .75
*	56002768	1	Nut, Hex Nyl Loc 10-24	31	56009096	1	Wsh Flt .193 x .875 x .060
4	56171343	1	Tube, Handle	32	56171110	1	Arm
5	56388545	2	Hand Grip	33	56171111	1	Base
	56172321	1	Collar Assembly (#6-9)	34	56380732	1	Spring
6	56172275	1	Collar	35	56009030	3	Scr, Pan Phil Thd Form 10-24 x .38
7	56003129	1	Spring Pin	38	56014828	1	Decal, Warning
8	56201405	1	Knob	40	56416463	1	Clamp, .25 Hose Support
9	56172217	1	Pin	41	56009051	2	Scr, Pan Phil Thd Form 8-32 x .38
10	56171279	1	Plunger		56172090	1	Lever Assembly (#42-53)
11	56201448	1	Spring	42	56172128	1	Cable
12	56171281	1	Bushing	43	56002864	1	Nut, Hex Nyl Loc-Thin 6-32
13	56172084	1	Cord Set, 14/3 x 50'	44	56009125	1	Wsh, Bowed .266 x .500 x .060
14	56109630	1	Strain Relief	45	56002006	1	Wsh, Flt SAE #6
*	56109632	1	Brass Insert For 56109630	46	56172130	1	Bushing, Step
16	56171093	2	Washer, Machined	47	56172126	1	Lever
17	56009095	1	Nut, Conduit Lock 1/2-14	48	56172024	1	Cover
20	56016439	1	Decal, Handle	49	56002534	3	Scr, Pan Phil Thd Form 8-32 x .25
21	56153699	4	Button Plug	50	56009179	1	Nut, Hex Machine 1/4-20
22	56171336	2	Pivot Bolt	51	56172087	1	Cover, Weldt
23	56171269	1	Bushing	52	56002817	1	Scr, Pan Phil 6-32 x .75
24	56171361	1	Spring	53	56014326	1	Decal, Important
25	56171132	1	Plunger				
26	56171373	1	Cable				
27	56001851	1	Scr, Drive RND #4 X .25				

* = Not Shown

100Volt / 120Volt



230Volt

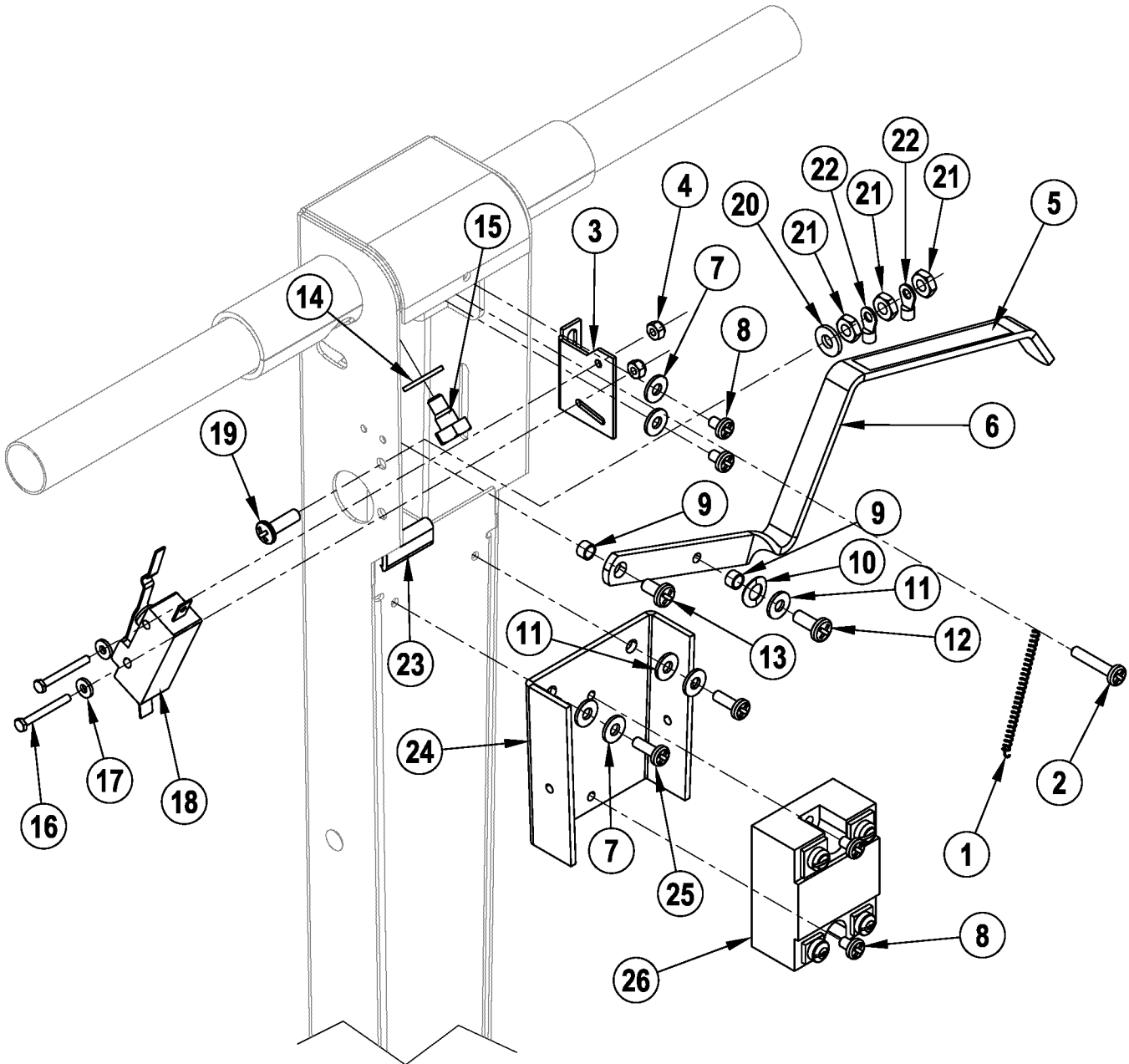


Item	Ref. No.	Qty	Description
			100V / 115V
1	56445177	1	Spring
2	56002591	1	#8-32 x 7/8 HP-5 Screw
3	56171209	1	Bracket
4	56001986	1	#4-40 Nut
5	56014856	1	Decal, Handle
6	56171126	1	Lever
7	56001940	2	#8 Shakeproof Washer
8	56002534	2	#8-32 x 1/4 HP-5 Screw
9	56151092	2	Spacer
10	56171373	1	Cable
11	56009125	1	Washer
12	56002508	1	#10-24 x 1/2 HP-5 Screw
13	56002518	1	#10-24 x 3/8 HP-5 Screw
14	56001905	1	5/16 Shakeproof Washer
15	56234079	1	1/4-20 x 1/2 Screw
16	56002183	2	#4-40 x 7/8 Screw
17	56001952	2	#4 Shakeproof Washer
18	56388019	1	Switch, N.C. Before Serial # 279789 (Date Code F88)
	56385615	1	Switch, N.O. After Serial # 279788 (Date Code F88) TSBUS2006-939
*	56321737	1	Wire Nut
*	56478246	1	Cable Tie

* = Not Shown

Item	Ref. No.	Qty	Description
			230V
1	56001952	4	#4 Shakeproof Washer
2	56002722	2	#4-40 x 1 3/4 Screw
3	56445177	1	Spring
4	56002591	1	#8-32 x 7/8 HP-5 Screw
5	56171126	1	Lever
6	56151092	2	Spacer
7	56171373	1	Cable
8	56009125	1	Washer
9	56002508	1	#10-24 x 1/2 HP-5 Screw
10	56002518	1	#10-24 x 3/8 HP-5 Screw
11	56001905	1	5/16 Shakeproof Washer
12	56234079	1	1/4-20 x 1/2 Screw
13	56014119	1	Decal, Ground Symbol
14	56183523	1	Terminal Block
*	56002712	2	#4-40 x 5/8 HP-5 Screw
15	56001986	2	#4-40 Nut
16	56200190	2	Fiber Washer
17	56183589	2	Sleeve
18	56388019	2	Switch, N.C. Before Serial # 279789 (Date Code F88)
	56385615	2	Switch, N.O. After Serial # 279788 (Date Code F88) TSBUS2006-939
*	56325219	3	Cable Tie
*	56478246	1	Cable Tie

* = Not Shown



Item	Ref. No.	Qty	Description
			115V
1	56445177	1	Spring
2	56009034	1	Scr, Pan Phil Thd Form 8-32 x .88
3	56171209	1	Bracket
4	56002838	2	Nut, Hex Nyl Loc 4-40
5	56014856	1	Decal, Handle
6	56171126	1	Lever
7	56009010	4	Wsh, Int Shprf #8
8	56009036	4	Scr, Pan Phil Thd Form 8-32 x .25
9	56151092	2	Bushing
10	56009125	1	Wsh, Bowed .266 x .500 x .060
11	56002140	3	Washer
12	56009029	1	Scr, Pan Phil Thd Form 10-24 x .50
13	56009030	1	Scr, Pan Phil Thd Form 10-24 x .38
14	56009052	1	Wsh, Int Shprf 5/16
15	56234079	1	Screw
16	56003104	2	Scr, Hex 4-40 x 1.00
17	56009171	2	Wsh, Int Shprf #4
18	56385615	1	Switch, Snap SPST N.O.
19	56002124	1	Scr, Pan Phil 10-24 x .62
20	56009011	1	Wsh, Int Shprf #10
21	56009009	3	Nut, Hex Machine 10-24
22	56311227	2	Terminal, Ring #8, 16-4
23	56755581	1	Trim (QTY is measured in inches)
24	56172026	1	Mount, Relay
25	56009031	2	Scr, Pan Phil Thd Form 8-32 x .50
26	56324334	1	Relay
*	56321737	1	Wire Nut
*	56478246	1	Cable Tie
*	56172029	1	16 AWG x 10 White Wire
*	56172028	1	16 AWG x 10 Red Wire
*	56172029	1	14 AWG x 10 Black Wire

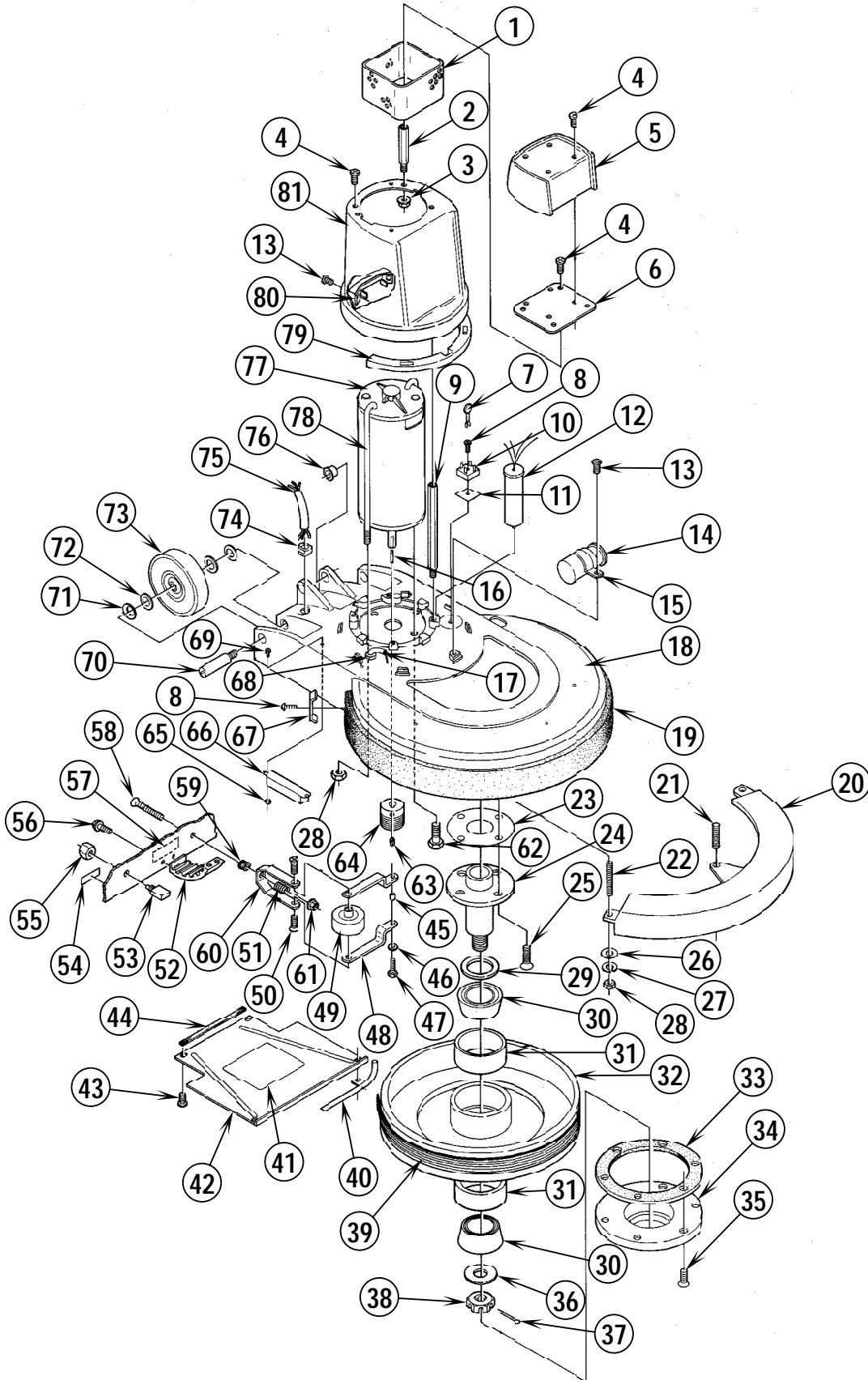
* = Not Shown

BASE ASSEMBLY

10

All-Purpose Matador™ 17 / 20

00-2



BASE ASSEMBLY

00-2

All-Purpose Matador™ 17 / 20

11

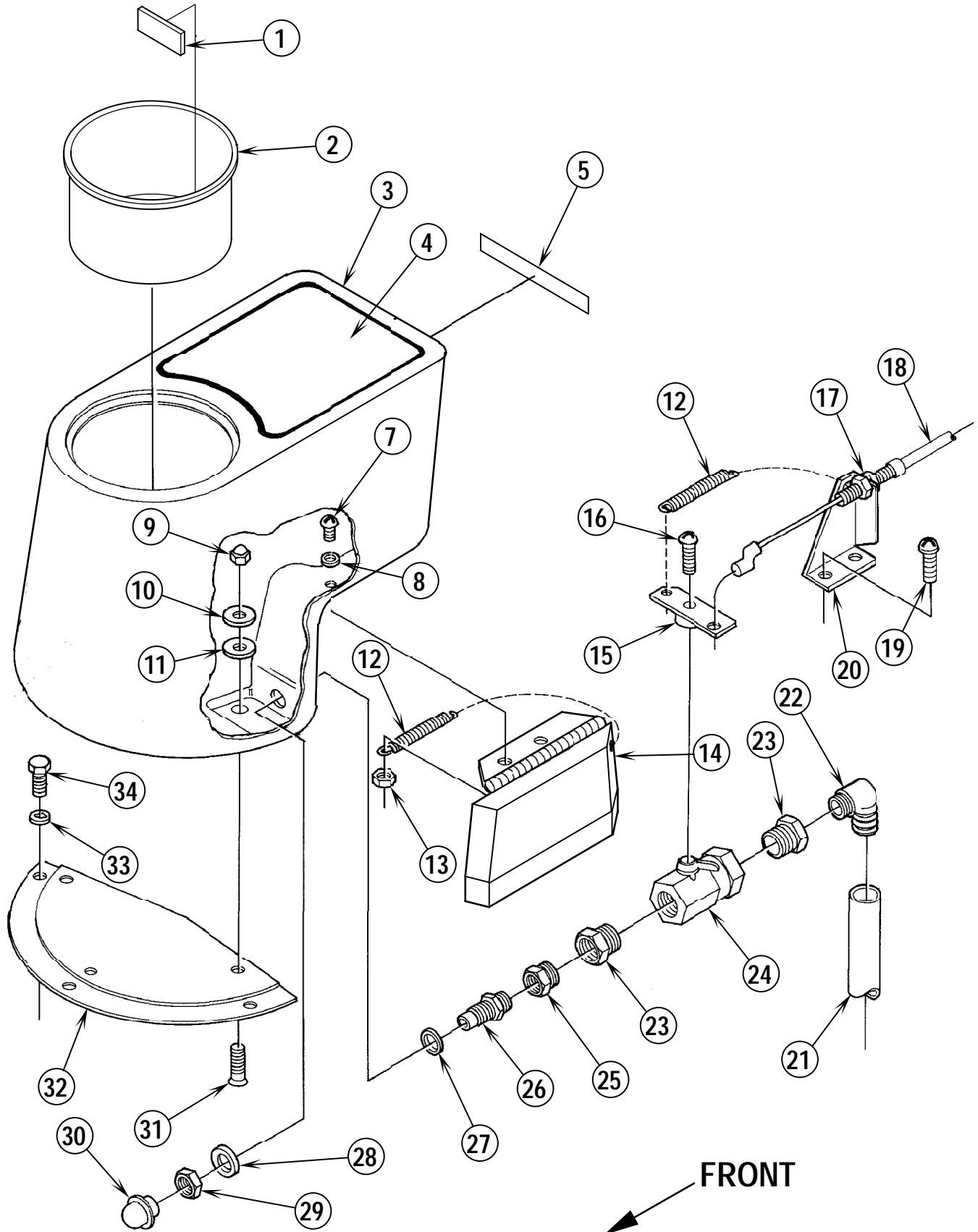
Item	Ref. No.	Qty	Description	Item	Ref. No.	Qty	Description
1	56171590	1	Guard	41	56014843	1	Decal, Instructions 115V
2	56171559	4	Spacer		56014936	1	Decal, Wiring 100V
3	56002768	2	#10-24 Nyl Loc Nut	42	56171092	1	Panel 17"
4	56002043	10	#10-24 x 3/8 Screw		56171121	1	Panel 20"
5	56172526	1	Shroud Cover	43	56002523	4	#8-32 x 3/8 HP-5 Screw
6	56171512	1	Bracket	44	56320099	2	Gasket (51.4 cm)
7	56387554	1	Varistor	45	56368989	1	Bushing
8	56002510	3	#10-24 x 5/8 HP-5 Screw	46	56002098	1	1/4 Flat Washer
9	56171526	4	Spacer	47	56002514	1	1/4-20 x 3/4 HP-5 Screw
10	56180163	1	Rectifier	48	56171039	2	Idler Bracket 17"
11	56180164	1	Q-Pad		56171176	2	Idler Bracket 20"
12	56171743	1	RFI Filter 230V	49	56171734	1	Idler
13	56002518	3	#10-24 x 3/8 HP-5 Screw	50	56002153	2	#10-24 x 3/8 Flat Hd Screw
14	56171552	1	Capacitor 100V, 115V	51	56171177	1	Spring
	56171510	1	Capacitor 230V	52	56171104	1	Ratchet
15	56171531	1	Clamp	53	56454538	1	15A Circuit Breaker 100V, 115V
16	56443719	1	Key		56387316	1	10A Circuit Breaker 230V
17	56170935	1	Cord 100V, 115V	54	56014873	1	Decal, Circuit Breaker
	56171038	1	Cord 230V	55	56171541	1	Nut
18	56172306	1	Skirt Housing 17" (#24,25,52,56)	56	56002517	4	1/4-20 x 3/4 HP-5 Pan Hd Screw
	56172282	1	Skirt Housing Only 17"	57	56015324	1	Nameplate 100V, 115V
	56172307	1	Skirt Housing 20" (#24,25,52,56)		56015401	1	Nameplate 230V
	56172281	1	Skirt Housing Only 20"	58	56002603	1	1/4-20 x 3 Screw
19	56514070	1	Bumper 17"	59	56206849	1	Bearing
	56514065	1	Bumper 20"	60	56171174	1	Bracket
20	56171422	1	Weight 17"	61	56002708	1	1/4-20 Nyl Loc Nut
	56171047	1	Weight 20"	62	56002667	2	5/16-18 x 3/4 Bolt
21	56171263	1	Stud 17"	63	56001826	2	5/16-18 x 1/2 Set Screw
22	56171221	2	Stud	64	56171414	1	Sheave 17"
23	56171366	1	Shim 17"		56171088	1	Sheave 20"
24	56171056	1	Stud Shaft	65	56002808	2	#8-32 Nyl Loc Nut 230V
25	56002521	4	1/4-20 x 3/4 HP-5 Flat Hd Screw	66	56172260	1	Resistor 230V
26	56001939	3	5/16 Flat Washer (2 on 20")	67	56171108	2	Bumper Clamp
27	56001905	3	5/16 Skprf Washer (2 on 20")	68	56382817	1	Strain Relief
28	56002701	5	5/16-18 Nyl Loc Nut (4 on 20")	69	56387672	2	Screw 230V
29	56171078	1	Seal	70	56520845	2	Axle
30	56378267	2	Bearing	71	56155373	2	Bowed Washer
31	56378259	2	Bearing Race	72	56155411	2	Flat Washer
32	56171376	1	Pulley W/Races	73	56161691	2	Wheel
	56171090	1	Pulley W/O Races	74	56382818	1	Strain Relief
33	56158275	1	Gasket	75	56171129	1	Cord Set 100V, 115V
34	56163430	1	Drive Cap (Silver/NP-47)		56172331	1	Cord Set 230V
	56163431	1	Drive Cap (Gold/NP-92)	76	56171095	2	Bearing
35	56001849	6	#12-24 x 5/8 Screw	77	56171594	1	Motor 100V, 115V 1.5 hp
36	56163449	1	Washer		56171556	1	Motor 230V 1.5 hp
37	56002038	1	Cotter Pin		56171472	1	Carbon Brush Set 100V, 115V
38	56158313	1	Castle Nut		56171473	1	Carbon Brush Set 230V
39	56171200	1	Belt		56171557	1	End Bell (W/Brushes) 100V, 115V
40	56171640	1	Tube	78	56171530	2	J-Bolt
				79	56172525	1	Gasket
				80	56171786	1	Bracket 115V, 230V
				81	56172287	1	Motor Shroud

TANK ASSEMBLY

12

All-Purpose Matador™ 17 / 20

00-2



TANK ASSEMBLY

08-8

All-Purpose Matador™ 17 / 20

13

Item	Ref. No.	Qty	Description
	56172304	1	Tank Assembly, US (#1-16,22-32,35-36)
	56172345	1	Tank Assembly, Japan (#1-16,22-32,35-36)
1	56014919	1	Decal, Fill Line 100V, 115V
2	56172288	1	Cylinder Cover
3	56172289	1	Tank
4	56016461	1	Decal, All-Purpose 17
	56016463	1	Decal, All-Purpose 20
5	56014914	1	Decal, Caution, US
	56017092	1	Decal, Caution, Japan
6			Intentionally Omitted
7	56001913	2	1/4-20 x 7/8 Brass Screw
8	56900737	2	Sealing Washer
9	56172066	3	Acorn Nut
10	56159387	3	Brass Washer
11	56154776	3	Rubber Washer
12#	56445177	2	Spring
13	56001827	2	1/4-20 Whiz Nut
14	56172291	1	Cover
15	56172166	1	Lever
16	56002018	1	#10-24 x 5/8 Screw
17	56001976	1	1/4-20 Nut
18	56172128	1	Cable
19	56002508	2	#10-24 x 1/2 HP-5 Screw
20	56172292	1	Bracket
21	56172176	1	Hose
22	56753691	1	Barb
23	56751686	2	Reducer
24	56387762	1	Valve
25	56750363	1	Bushing
26	56172075	1	Nipple
27	56742552	1	O-Ring
28	56009218	1	Brass Washer
29	56745860	1	Jam Nut
30	56172096	1	Strainer
31	56002081	3	1/4-20 x 7/8 Flat Head Screw
32	56172286	1	Plate
33	56002053	3	#10 Flat Washer
34	56002829	3	#10-24 x 5/8 Screw

* = Not Shown

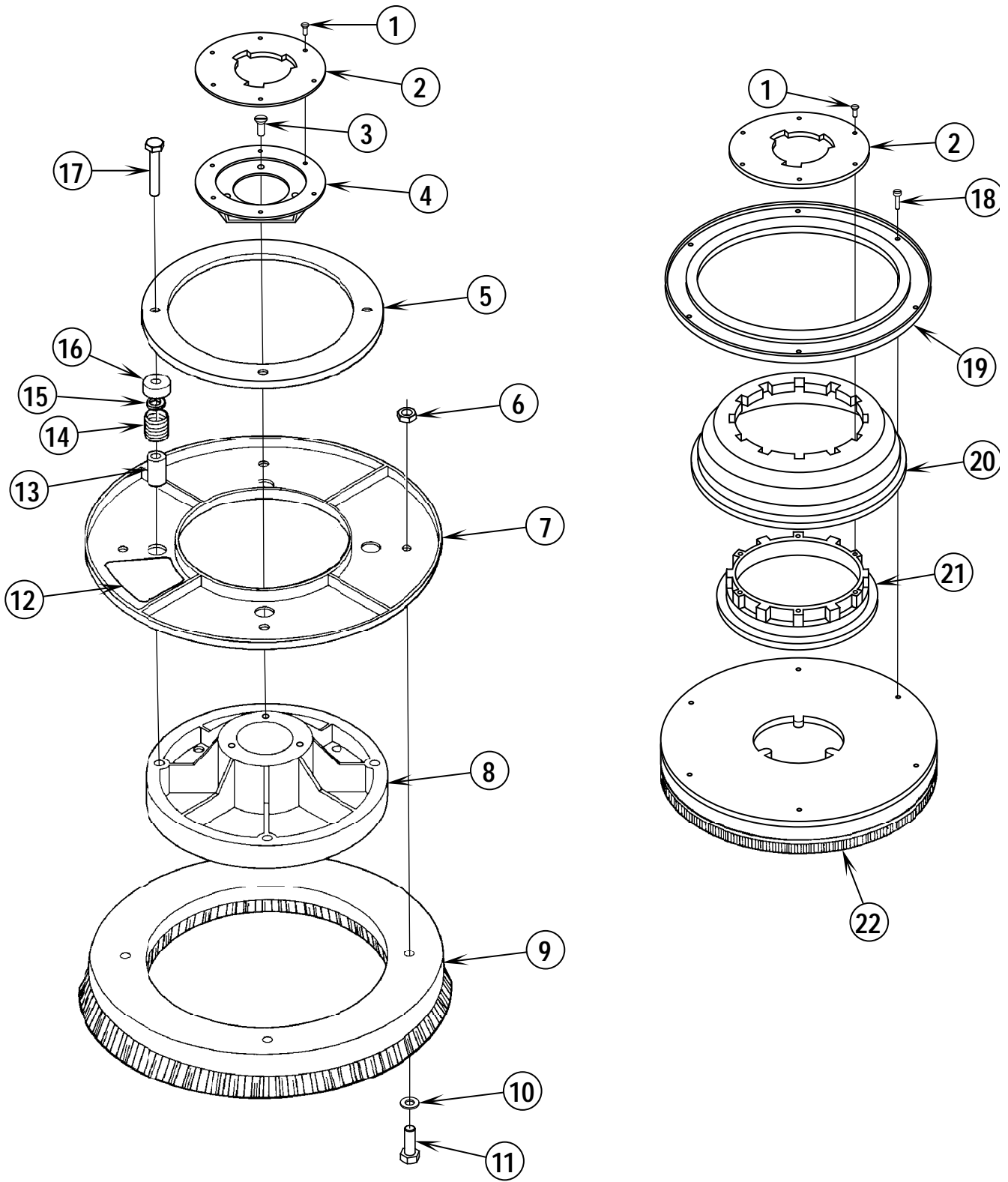
= Revised or new since last update

SHAMPOO BRUSH AND PAD HOLDERS

14

All-Purpose Matador™ 17 / 20

00-2



SHAMPOO BRUSH AND PAD HOLDERS

00-2

All-Purpose Matador™ 17 / 20

15

Item	Ref. No.	Qty	Description	Ref. No.	Qty	Description
	56505537	1	Soft-Touch™ Shampoo Brush Assy, 17" (NP-47 / #1-17, except 15)	17" Brushes For Silver NP-47 Drive Cap		
	56505539	1	Soft-Touch™ Shampoo Brush Assy, 17" (NP-47 / #1-17, except 15)	56505055	1	Magna Grit™ 46 Brush
	56505538	1	Soft-Touch™ Shampoo Brush Assy, 20" (NP-47 / #1-17)	56505054	1	Dyna Grit™ 80 Brush
	56505540	1	Soft-Touch™ Shampoo Brush Assy, 20" (NP-92 / #1-17)	56505078	1	MidLite Grit™ 180 Brush
1	56009065	6	Scr, Flt Phil Thd Form 10-24 x .50	56505082	1	MidGrit™ 240 Brush
2	56506001	1	Clutch Plate (Silver/NP-47)	56505059	1	AgLite™ 500 Brush
	56506006	1	Clutch Plate (Plastic/NP-92)	56505331	1	Prolene Brush
3	56002694	3	Scr, SS Thd Form 1/4-14 x 1.00	56505076	1	ProLite™ Brush
4	56505536	1	Adapter	56505334	1	Union Mix Brush
5	56171322	1	Ring	56505330	1	Short-Trim Pad Holder (standard)
6	56002856	4	Nut, Hex Nyl Loc SS 5/16-18	17" Brushes For Gold NP-92 Drive Cap		
7	56171418	1	Plate, 17"	56505911	1	Magna Grit™ 46 Brush
	56171304	1	Plate, 20"	56505912	1	Dyna Grit™ 80 Brush
8	56505543	1	Drive Disc	56505918	1	MidLite Grit™ 180 Brush
9	56505530	1	Brush, 17"	56505917	1	MidGrit™ 240 Brush
	56505531	1	Brush, 20"	56505913	1	AgLite™ 500 Brush
10	56002938	4	Wsh, Flt SS 5/16	56505914	1	Prolene Brush
11	56002913	4	Scr, Hex Hd SS 5/16-18 x 1.00	56505915	1	ProLite™ Brush
12	56014960	1	Decal, Caution, 17"	56505916	1	Union Mix Brush
	56014922	1	Decal, Caution, 20"	56505910	1	Short-Trim Pad Holder
13	56171316	4	Bushing	20" Brushes For Silver NP-47 Drive Cap		
14	56171314	4	Spring	56505058	1	Magna Grit™ 46 Brush
15	56171332	4	Spacer, 20"	56505048	1	Dyna Grit™ 80 Brush
16	56171320	4	Spacer	56505079	1	MidLite Grit™ 180 Brush
17	56171328	4	Scr, #14 x 2.50	56505083	1	MidGrit™ 240 Brush
	56505180	1	Level-Set Pad Holder, 17" (NP-47 / #1, 2, 18-22)	56505063	1	AgLite™ 500 Brush
	56505270	1	Level-Set Pad Holder, 17" (NP-92 / #1, 2, 18-22)	56505450	1	Prolene Brush
	56505183	1	Level-Set Pad Holder, 20" (NP-47 / #1, 2, 18-22)	56505077	1	ProLite™ Brush
	56505280	1	Level-Set Pad Holder, 20" (NP-92 / #1, 2, 18-22)	56505454	1	Union Mix Brush
18		6	Screw	56505455	1	Short-Trim Pad Holder (standard)
19	56505185	1	Outer Ring	20" Brushes For Gold NP-92 Drive Cap		
20	56505186	1	Mount, Rubber Shock	56505921	1	Magna Grit™ 46 Brush
21	56505182	1	Inner Ring	56505922	1	Dyna Grit™ 80 Brush
22	56505181	1	Face, Level-Set Padholder, 17"	56505928	1	MidLite Grit™ 180 Brush
	56505184	1	Face, Level-Set Padholder, 20"	56505927	1	MidGrit™ 240 Brush
				56505923	1	AgLite™ 500 Brush
				56505924	1	Prolene Brush
				56505925	1	ProLite™ Brush
				56505926	1	Union Mix Brush
				56505920	1	Short-Trim Pad Holder
				56182058	A/R	"Pad Grab" Pad Retainer (snap in)
				56393567	A/R	"Big Mouth" Pad Retainer (threaded)

Ref. No.	Qty	Description
----------	-----	-------------

100V / 115V WIRING DIAGRAM		
56171552	1	Capacitor
56454538	1	Circuit Breaker 15A
56388019	1	Main Switch, N.C. Before Serial # 279789 (Date Code F88)
56385615	1	Main Switch, N.O. After Serial # 279788 (Date Code F88)
56171594	1	Motor 1.5 hp
56171472	1	Carbon Brush Set for Motor
56171557	1	End Bell (W/Brushes) for Motor
56180163	1	Rectifier
56387554	1	Varistor
56324334	1	Relay (after SN1934918)

230V WIRING DIAGRAM		
56171552	1	Capacitor
56387316	1	Circuit Breaker 10A
56388019	2	Main Switch, N.C. Before Serial # 279789 (Date Code F88)
56385615	2	Main Switch, N.O. After Serial # 279788 (Date Code F88)
56171556	1	Motor 1.5 hp
56171473	1	Carbon Brush Set for Motor
56180163	1	Rectifier
56172260	1	Resistor
56171743	1	RFI Filter
56183523	1	Terminal Block
56387554	1	Varistor

Ref. No.	Qty	Description
----------	-----	-------------

230V WIRING DIAGRAM		
56171552	1	Capacitor
56387316	1	Circuit Breaker 10A
56388019	2	Main Switch, N.C. Before Serial # 279789 (Date Code F88)
56385615	2	Main Switch, N.O. After Serial # 279788 (Date Code F88)
56171556	1	Motor 1.5 hp
56171473	1	Carbon Brush Set for Motor
56180163	1	Rectifier
56172260	1	Resistor
56171743	1	RFI Filter
56183523	1	Terminal Block
56387554	1	Varistor

230V WIRING DIAGRAM		
56171552	1	Capacitor
56387316	1	Circuit Breaker 10A
56388019	2	Main Switch, N.C. Before Serial # 279789 (Date Code F88)
56385615	2	Main Switch, N.O. After Serial # 279788 (Date Code F88)
56171556	1	Motor 1.5 hp
56171473	1	Carbon Brush Set for Motor
56180163	1	Rectifier
56172260	1	Resistor
56171743	1	RFI Filter
56183523	1	Terminal Block
56387554	1	Varistor



**Nilfisk
Advance**

setting standards

Nilfisk-Advance, Inc.
14600 21st Avenue North
Plymouth, MN 55447-3408
www.nilfisk-advance.com
Phone: 800-989-2235
Fax: 800-989-6566
©2008 Nilfisk-Advance, Inc.