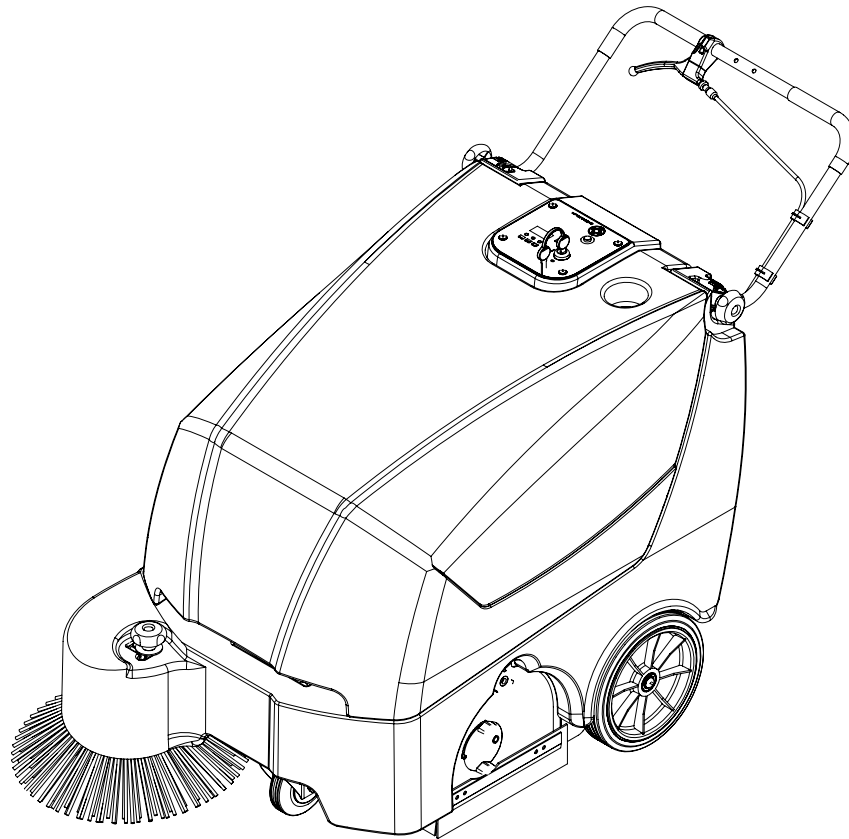


Terra™ 128B



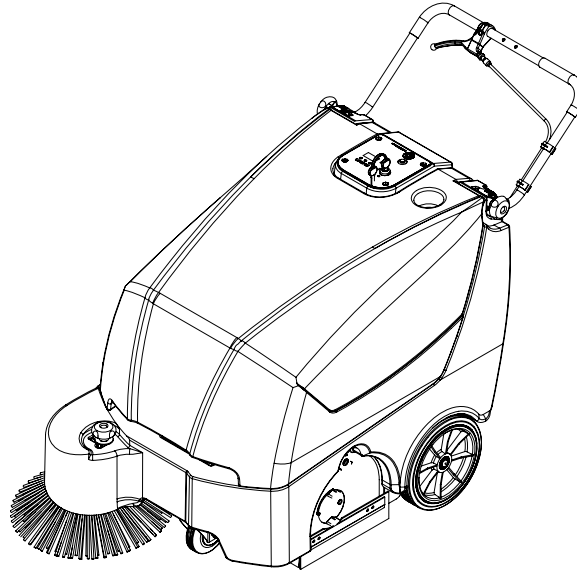
PARTS LIST

Advance model: 908 4003 010



Advance
by Nilfisk-Advance

146 0597 000(6)2008-04



DESCRIPTION

PLAN

CHASSIS SYSTEM	2 - 3
MAIN BROOM ASSEMBLY	4 - 5
SIDE BROOM ASSEMBLY	6 - 7
DRIVE WHEELS ASSEMBLY	8 - 9
HOPPER SYSTEM	10 - 11
TRANSMISSION SYSTEM	12 - 13
BELT TENSIONER ASSEMBLY	14 - 15
REDUCTION MOTOR ASSEMBLY	16 - 17
DUST CONTROL SYSTEM	18 - 19
HANDLE SYSTEM	20 - 21
CONTROL PANEL ASSEMBLY	22 - 23
RIGHT-LEFT HUB ASSEMBLIES	24 - 25
DECALS	26 - 27
ELECTRICAL PARTS	28 - 29
BATTERY CHARGER ASSEMBLY	30 - 31
BATTERY CHARGER	32
WIRING DIAGRAM	33
RECOMMENDED SPARE PARTS	34

WHEN ORDERING PARTS

- * Use the 8, 9 or 10 digit numbers from the "Ref. No." columns in this parts list.
- * Specify the model and serial number of the machine.
- * Use the space below to record the model and serial number for future reference.

Model _____ Serial No. _____

*** = Optional**

= Modified item No. or New item No.

[] = Not shown

xxxxxx = Contained in a Kit

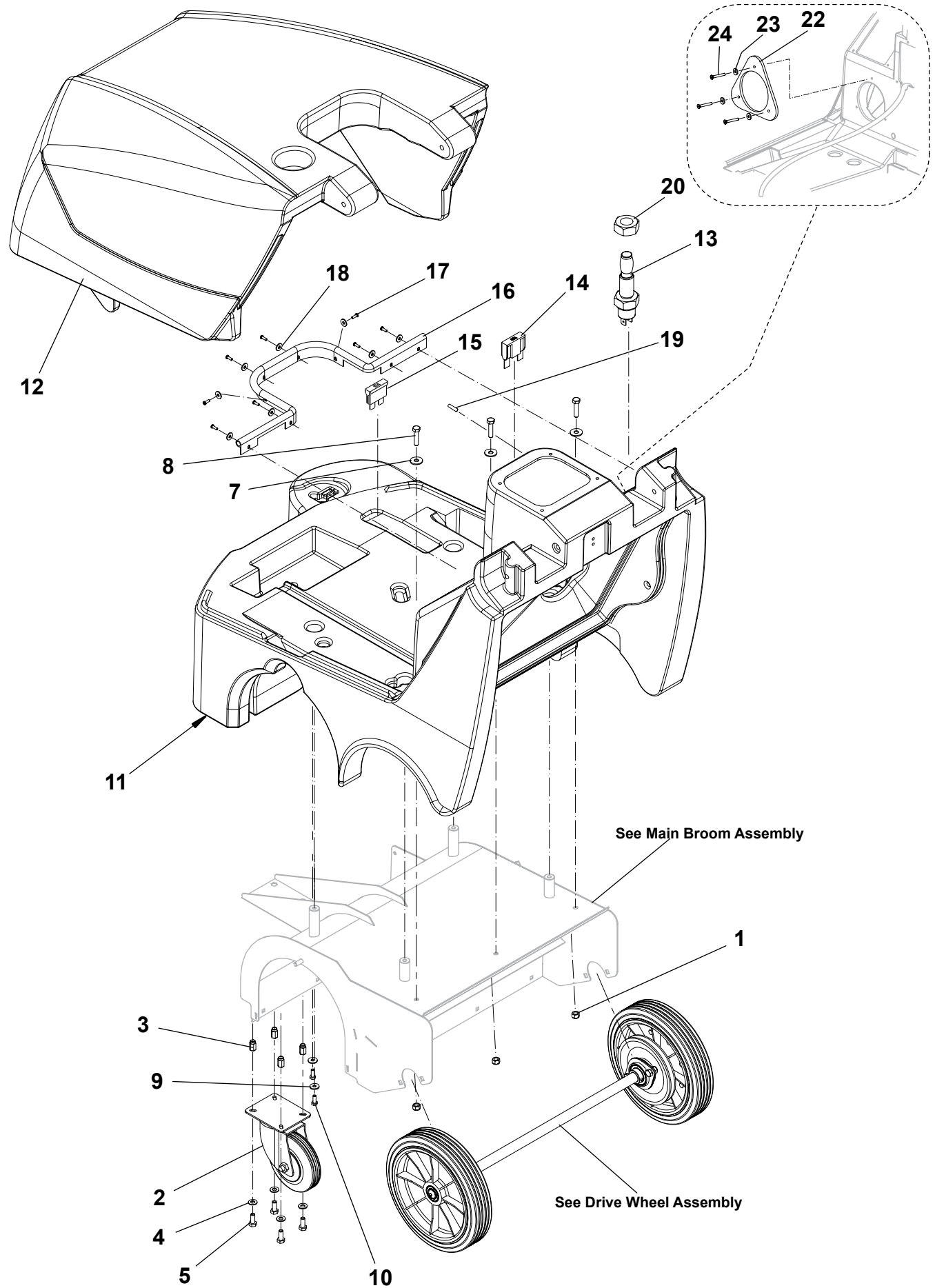
CHASSIS SYSTEM

2002-06

2

Terra™ 128B

2008-04



2002-06	CHASSIS SYSTEM		
2008-04	Terra™ 128B		3

Item No.	Ref. No.	Qty	Description
1	xxxxxxx	3	NUT SELF LOCKING M8 (CHASSIS SYSTEM HARDWARE KIT)
2	145 5115 000	1	CASTOR
2*	146 0569 000	1	CASTOR WITH BRAKE
3	xxx xxxx xxx	4	INSERT (CHASSIS SYSTEM HARDWARE KIT)
4	xxx xxxx xxx	4	WASHER FLAT (CHASSIS SYSTEM HARDWARE KIT)
5	xxx xxxx xxx	4	SCREW HEX HD. M8X20 (CHASSIS SYSTEM HARDWARE KIT)
7	xxx xxxx xxx	3	WASHER FLAT (CHASSIS SYSTEM HARDWARE KIT)
8	xxx xxxx xxx	3	SCREW HEX HD. M8X35 (CHASSIS SYSTEM HARDWARE KIT)
9	xxx xxxx xxx	2	WASHER FLAT (CHASSIS SYSTEM HARDWARE KIT)
10	xxx xxxx xxx	2	SCREW HEX HD M6X16 (CHASSIS SYSTEM HARDWARE KIT)
11	146 0510 000	1	CHASSIS ROTOMOLDED
12	146 0512 000	1	HOOD ROTOMOLDED
13	146 0565 000	1	HOOD SAFETY SWITCH
14#	909 6218 000	1	FUSE 60A
15	145 9853 000	1	FUSE 15A
16	146 0662 000	1	SEAL FOR HOOD
17	xxx xxxx xxx	8	SCREW, CYL HD THD FORM (CHASSIS SYSTEM HARDWARE KIT)
18	xxx xxxx xxx	8	WASHER FLAT (CHASSIS SYSTEM HARDWARE KIT)
19	145 1726 000	1	FUSE 10A
20	146 0637 000	1	NUT HEX. THIN. M14
[21]	146 0808 000	1	CHASSIS SYSTEM HARDWARE KIT (1,3,4,5,7,8,9,10,17,18)
22#	146 3127 000	1	HOOD
23#	33005916	3	WASHER FLAT 10.5x21
24#	33004578	3	SCREW M6X70

2002-06	MAIN BROOM ASSY			
2008-04	Terra™ 128B			5

Item No.	Ref. No.	Qty	Description
1	xxxxxxx	3	SCREW M6X16 (MAIN BROOM ASSY HARDWARE KIT)
2	xxx xxxx xxx	10	MAIN SCREW (MAIN BROOM ASSY HARDWARE KIT)
3	145 4772 000	3	INSERT M6
4	146 0677 000	1	MAIN BROOM STD 245X500
5	146 0551 000	1	MAIN BROOM SUPPORT
6#	146 2137 000	1	RIGHT HUB PLATE
7	146 0586 000	1	NON MARKING REAR SKIRT
8	146 0587 000	2	NON MARKING SIDE SKIRT
9	146 0556 000	2	SKIRT PLATE
10	146 0557 000	2	SIDE SKIRT PLATE
11	146 0628 000	2	NON MARKING FRONT SKIRT STD
12#	xxx xxxx xxx	9	SCREW THD FORMING (MAIN BROOM ASSY HARDWARE KIT)
13	xxxxxxx	2	NUT HEX. SELFLOCKING M6 (MAIN BROOM ASSY HARDWARE KIT)
14	145 5035 000	1	KNOB
16	xxx xxxx xxx	2	SCREW HEX HD M6X12 (MAIN BROOM ASSY HARDWARE KIT)
17#	146 2136 000	1	LEFT HATCH
18	146 0611 000	1	CHAIN, GROUND
19	xxx xxxx xxx	1	WASHER M4 (MAIN BROOM ASSY HARDWARE KIT)
20	xxx xxxx xxx	1	WASHER, FLAT M4 (MAIN BROOM ASSY HARDWARE KIT)
21	xxx xxxx xxx	1	SCREW CYL. HD M4X10 (MAIN BROOM ASSY HARDWARE KIT)
22	146 0817 000	1	RIGHT HUB ASSY KIT (SEE RIGHT - LEFT HUB ASSEMBIES)
23	146 0818 000	1	LEFT HUB ASSY KIT (SEE RIGHT - LEFT HUB ASSEMBIES)
[24]	146 0809 000	1	MAIN BROOM ASSY HARDWARE KIT (1,2,12,13,16,19,20,21)
25	145 0268 000	1	RIGHT HUB, STD MAIN BROOM (FOR OPTION MAIN BROOMS CHECK AT PAGE 34)
26#	146 2085 000	1	SCREW 3,9X13

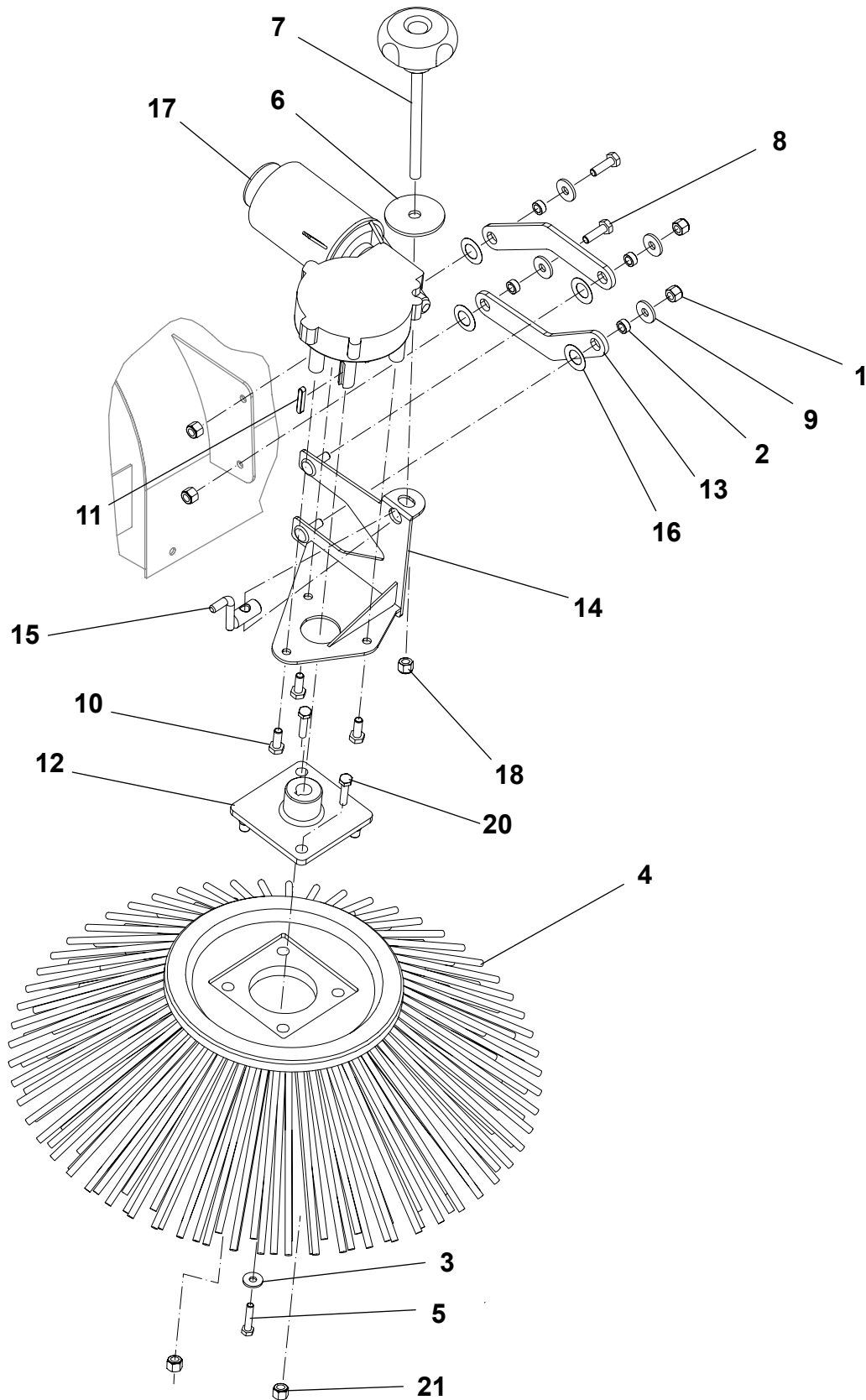
SIDE BROOM ASSY

2002-06

6

Terra™ 128B

2008-04



2002-06	SIDE BROOM ASSY		
2008-04	Terra™ 128B		7

Item No.	Ref. No.	Qty	Description
1	xxxxxxx	4	NUT SELFLOCKING M6 (SIDE BROOM ASSY HARDWARE KIT)
2	145 1252 000	4	SPACER
3	xxx xxxx xxx	1	WASHER FLAT (SIDE BROOM ASSY HARDWARE KIT)
4	146 0678 000	1	SIDE BROOM
4*	145 4959 000	1	SIDE BROOM STEEL MIX
4*	145 4976 000	1	SIDE BROOM NATURAL FIBER
5	xxx xxxx xxx	1	SCREW HEX HD M5X25 (SIDE BROOM ASSY HARDWARE KIT)
6	xxx xxxx xxx	1	WASHER FLAT (SIDE BROOM ASSY HARDWARE KIT)
7	145 8455 000	1	KNOB
8	xxx xxxx xxx	2	SCREW HEX HD M6X20 (SIDE BROOM ASSY HARDWARE KIT)
9	xxx xxxx xxx	4	WASHER FLAT (SIDE BROOM ASSY HARDWARE KIT)
10	xxx xxxx xxx	3	SCREW HEX HD M6X16 (SIDE BROOM ASSY HARDWARE KIT)
11	145 9777 000	1	KEY
12#	146 2918 000	1	SIDE BROOM HUB
13	146 0558 000	2	ARM SIDE BROOM
14	146 0559 000	1	BROOM BRACKET
15	146 0560 000	1	HOOK SIDE BROOM
16	xxx xxxx xxx	4	WASHER BELLEVILLE (SIDE BROOM ASSY HARDWARE KIT)
17	146 0532 000	1	REDUCTION GEAR MOTOR
18	xxxxxxx	1	NUT, HEX NYLON-LOC M8 (SIDE BROOM ASSY HARDWARE KIT)
[19]	146 0810 000	1	SIDE BROOM ASSY HARDWARE KIT (1,3,5,6,8,9,10,16,18,20,21)
20#	xxxxxxx	2	SCREW HEX HD M8X25 (SIDE BROOM ASSY HARDWARE KIT)
21#	xxxxxxx	2	NUT SELF LOCKING M8 (SIDE BROOM ASSY HARDWARE KIT)

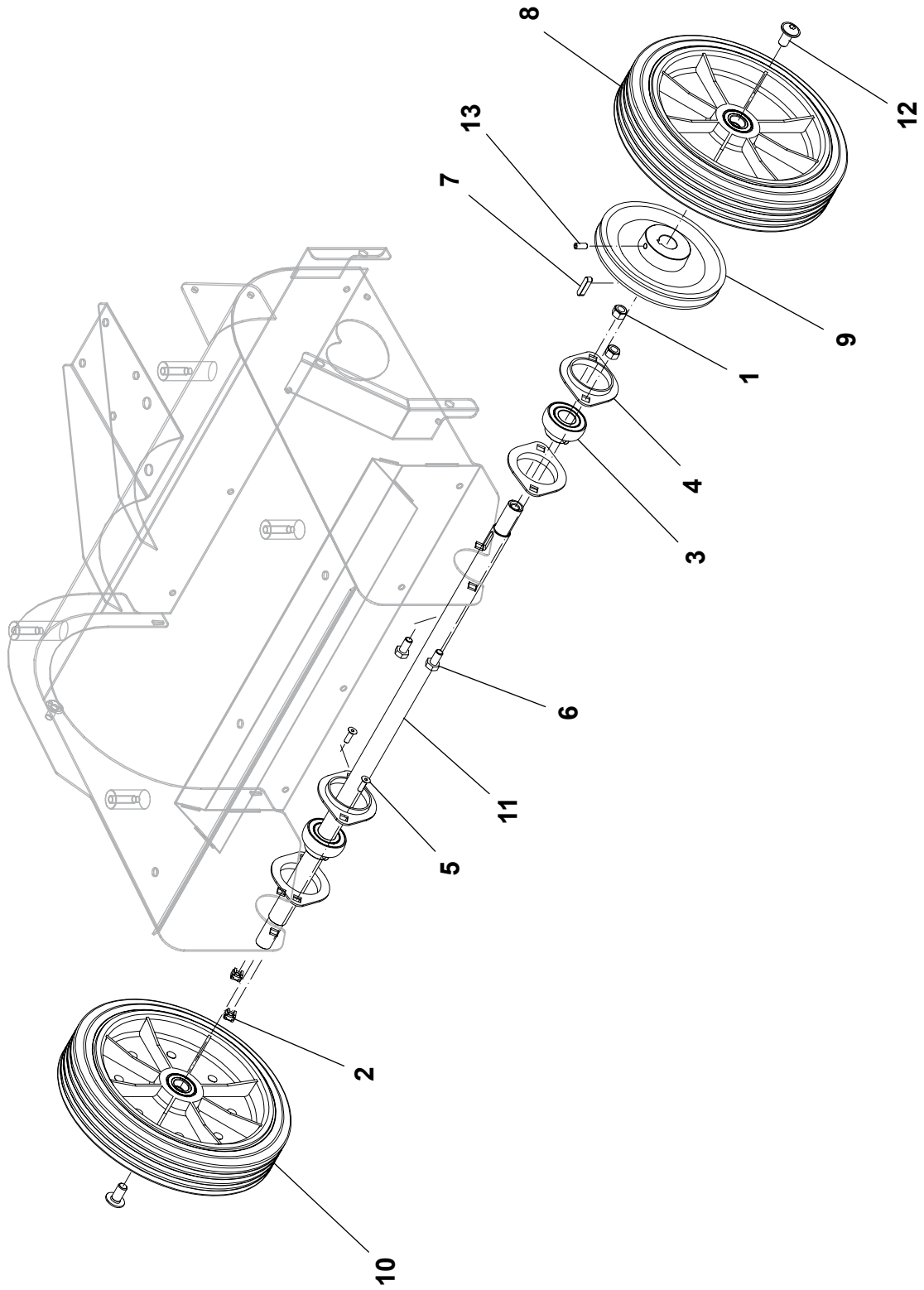
DRIVE WHEELS ASSY

2002-06

8

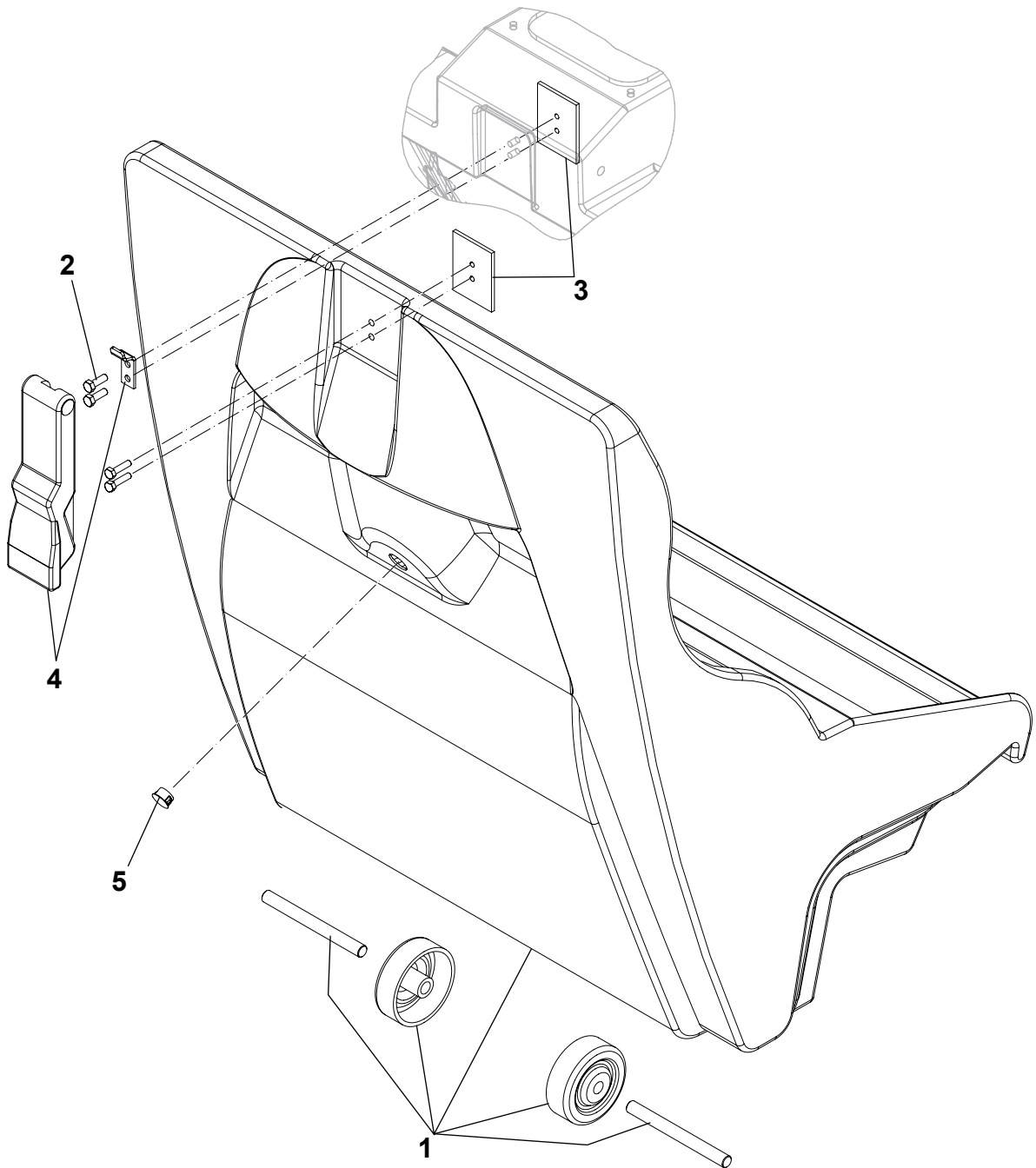
Terra™ 128B

2008-04



2002-06	DRIVE WHEELS ASSY			
2008-04	Terra™ 128B			9

Item No.	Ref. No.	Qty	Description
1	xxxxxxx	2	NUT SELFLOCKING M8 (DRIVE WHEEL ASSY HARDWARE KIT)
2	xxx xxx xxx	2	CAGE NUT (DRIVE WHEEL ASSY HARDWARE KIT)
3	145 1123 000	2	BALL BEARING
4	145 8543 000	2	SUPPORT
5	xxx xxx xxx	2	SCREW M5X16 (DRIVE WHEEL ASSY HARDWARE KIT)
6	xxx xxx xxx	2	SCREW M8X16 (DRIVE WHEEL ASSY HARDWARE KIT)
7	145 9899 000	1	KEY
8	146 0513 000	1	REAR WHEEL RIGHT
9	146 0517 000	1	PULLEY
10	146 0518 000	1	REAR WHEEL LEFT
11	146 0533 000	1	TRACTION SHAFT
12	xxx xxx xxx	2	SCREW M10X20 (DRIVE WHEEL ASSY HARDWARE KIT)
13	146 0640 000	1	DOWEL
[14]	146 0811 000	1	DRIVE WHEEL ASSY HARDWARE KIT (1,2,5,6,12)



2002-06	HOPPER SYSTEM			
	Terra™ 128B			11

Item No.	Ref. No.	Qty	Description
1	146 0642 000	1	HOPPER COMPLETE
2	xxx xxxx xxx	4	SCREW (MISCELLANEOUS HARDWARE KIT)
3	146 0562 000	2	FIXING PLATE
4	146 0520 000	1	HOOK RUBBER
[6]	146 0816 000	1	MISCELLANEOUS HARDWARE KIT [[2,PAGE 11)-(1, PAGE 19)-(1,PAGE 21)-(1-2-3,PAGE 31]]

Item No.	Ref. No.	Qty	Description
1	xxxxxxx	3	SCREW HEX HD. M8X16 (TRANSMISSION SYSTEM HARDWARE KIT)
2	xxxxxxx	2	NUT HEX SELFLOCKING M8 (TRANSMISSION SYSTEM HARDWARE KIT)
3	146 0150 00	1	MAIN BROOM BELT
4	145 0274 000	2	BELT TENSIONER SPRING
5	xxx xxxx xxx	2	SCREW M8X20 (TRANSMISSION SYSTEM HARDWARE KIT)
6	xxx xxxx xxx	3	SCREW M8X14 (TRANSMISSION SYSTEM HARDWARE KIT)
7	xxx xxxx xxx	3	WASHER (TRANSMISSION SYSTEM HARDWARE KIT)
8	xxx xxxx xxx	1	NUT HEX M6 (TRANSMISSION SYSTEM HARDWARE KIT)
9	145 5252 000	1	BATTERY CONTAINER
10	146 0668 000	5	INSULATING PANEL
11	xxx xxxx xxx	2	SCREW HEX HD M8X25 (TRANSMISSION SYSTEM HARDWARE KIT)
12	xxx xxxx xxx	7	WASHER FLAT (TRANSMISSION SYSTEM HARDWARE KIT)
13	xxx xxxx xxx	1	SCREW HEX HD M6X20 (TRANSMISSION SYSTEM HARDWARE KIT)
14	146 0515 000	1	SPACER
15	146 0543 000	1	BRACKET
16	146 0807 000	1	DRIVE BELT
17	146 0536 000	1	SUPPORTING PLATE
18	145 6133 000	2	INSERT
19	xxx xxxx xxx	3	SCREW M6X10 (TRANSMISSION SYSTEM HARDWARE KIT)
20	146 0690 000	1	VACUUM FLANGE
21	146 0696 000	1	VACUUM GASKET
[22]	146 0812 000	1	TRANSMISSION SYSTEM HARDWARE KIT (1,2,5,6,7,8,11,12,13,19)
23	146 0813 000	2	BELT TENSIONER ASSY KIT (SEE BELT TENSIONER ASSEMBLY)

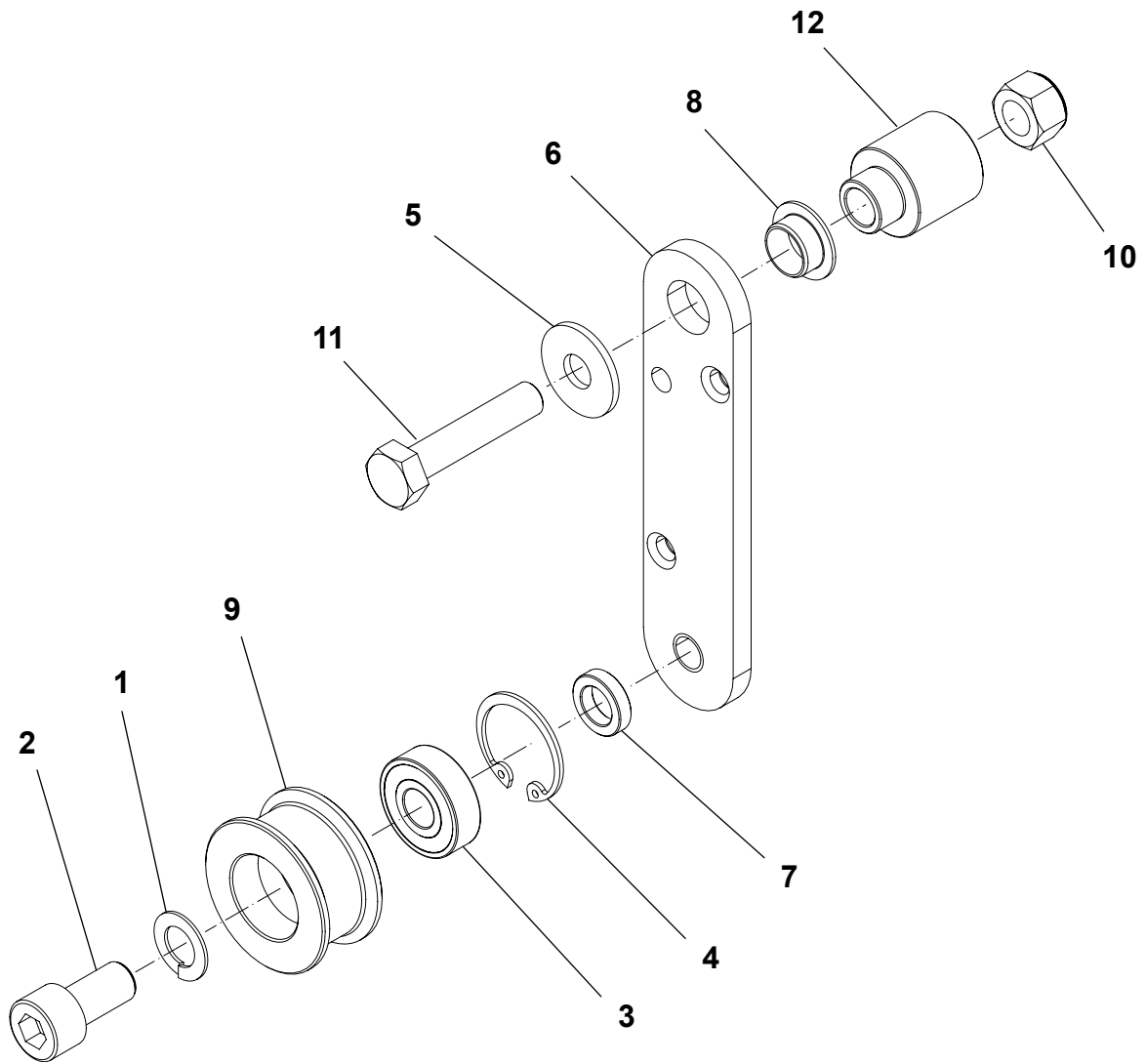
BELT TENSIONER ASSY

2002-06

14

Terra™ 128B

2008-04



Item No.	Ref. No.	Qty	Description
1	xxx xxxx xxx	1	WASHER (BELT TENSIONER ASSY KIT)
2	xxx xxxx xxx	1	SCREW M10X20 (BELT TENSIONER ASSY KIT)
3	xxx xxxx xxx	1	BALL BEARING (BELT TENSIONER ASSY KIT)
4	xxx xxxx xxx	1	SEEGER (BELT TENSIONER ASSY KIT)
5	xxx xxxx xxx	1	WASHER FLAT (BELT TENSIONER ASSY KIT)
6	xxx xxxx xxx	1	BELT TENSIONER ARM (BELT TENSIONER ASSY KIT)
7	xxx xxxx xxx	1	SPACER (BELT TENSIONER ASSY KIT)
8	xxx xxxx xxx	1	BEARING WITH FLANGE (BELT TENSIONER ASSY KIT)
9	xxx xxxx xxx	1	BELT STRETCHER ROLLER (BELT TENSIONER ASSY KIT)
10	xxxxxxxx	1	NUT (BELT TENSIONER ASSY KIT)
11	xxx xxxx xxx	1	SCREW M8X40 (BELT TENSIONER ASSY KIT)
12	xxx xxxx xxx	1	BUSHING (BELT TENSIONER ASSY KIT)
[13]	146 0813 000	1	BELT TENSIONER ASSY KIT (1,2,3,4,5,6,7,8,9,10,11,12)

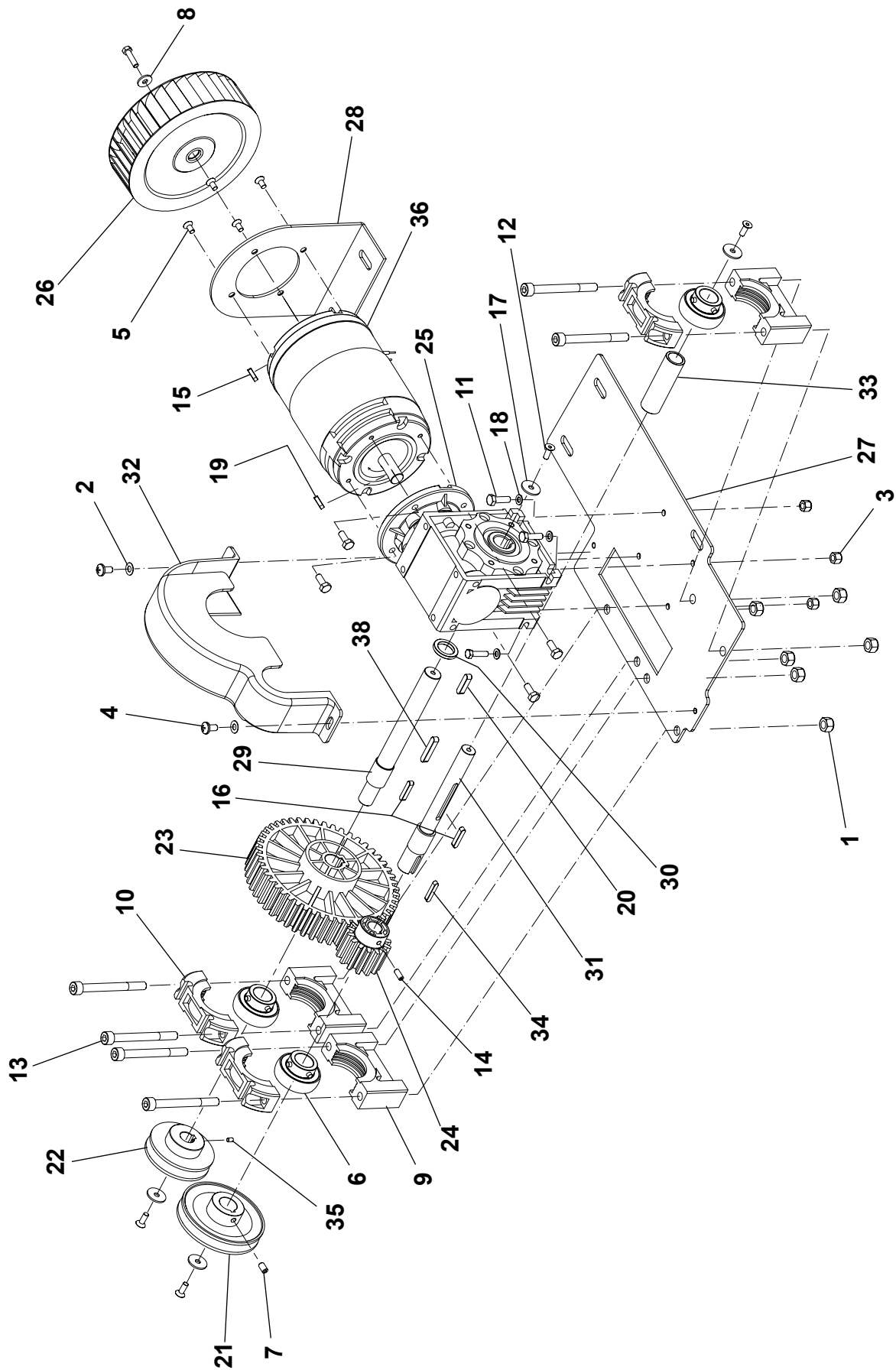
REDUCTION MOTOR ASSEMBLY

2002-06

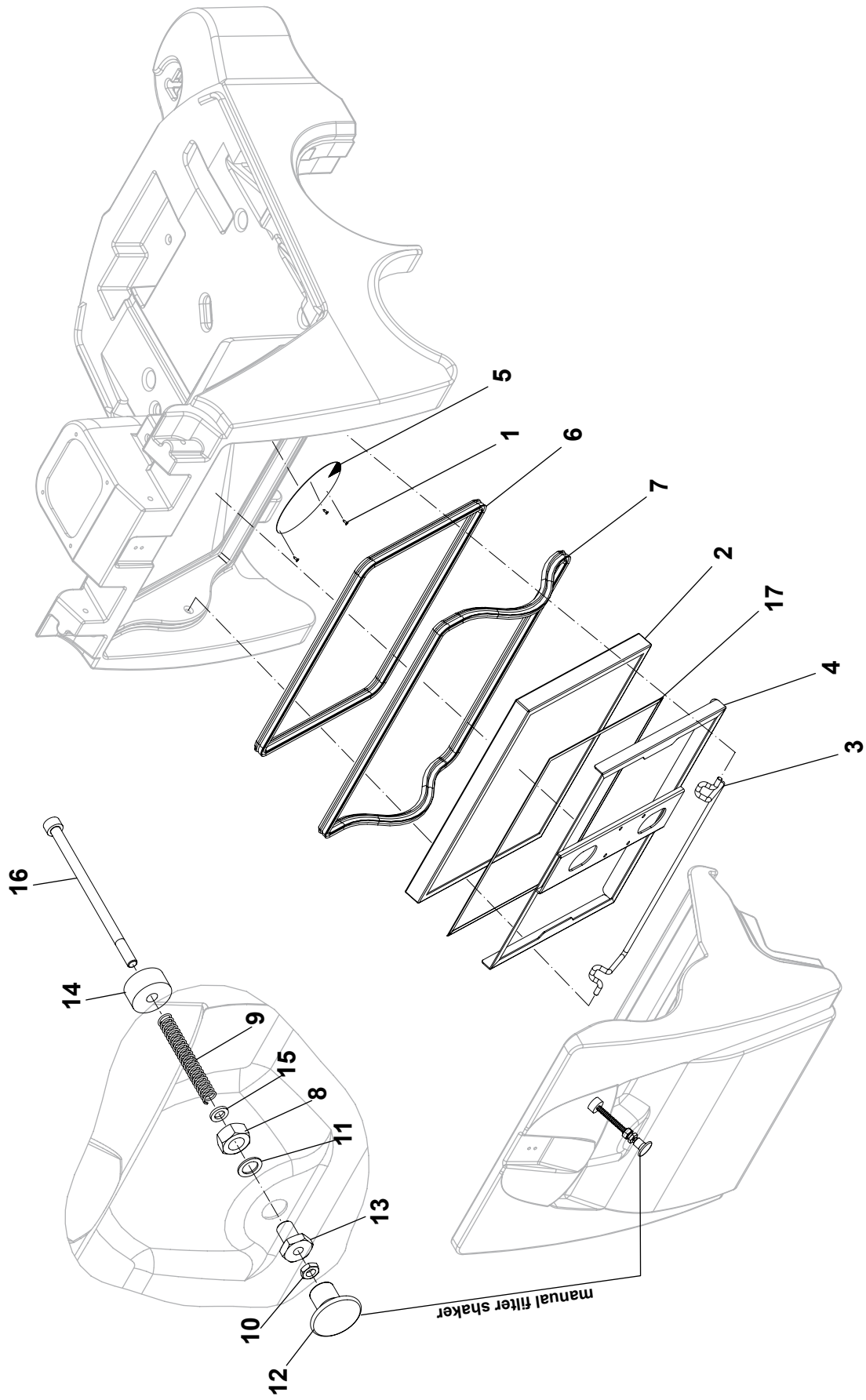
16

Terra™ 128B

2008-04



Item No.	Ref. No.	Qty	Description
1	xxxxxxx	6	NUT HEX SELFLOCKING M8 (REDUCTION MOTOR ASSY HARDWARE KIT)
2	xxxxxxx	2	WASHER FLAT (REDUCTION MOTOR ASSY HARDWARE KIT)
3	xxxxxxx	3	NUT HEX SELFLOCKING M5 (REDUCTION MOTOR ASSY HARDWARE KIT)
4	xxxxxxx	2	SCREW M6X12 (REDUCTION MOTOR ASSY HARDWARE KIT)
5	xxxxxxx	4	SCREW M6X12 (REDUCTION MOTOR ASSY HARDWARE KIT)
6	145 1123 000	3	BALL BEARING
7	145 1228 000	1	DOWEL
8	xxx xxxx xxx	1	WASHER FLAT (REDUCTION MOTOR ASSY HARDWARE KIT)
9	145 1976 000	3	BALL BEARING SUPPORT LOWER
10	145 1977 000	3	BALL BEARING SUPPORT UPPER
11	xxx xxxx xxx	4	SCREW HEX M5X20 (REDUCTION MOTOR ASSY HARDWARE KIT)
12	xxx xxxx xxx	4	SCREW M5X14 (REDUCTION MOTOR ASSY HARDWARE KIT)
13	xxx xxxx xxx	6	SCREW M8X80 (REDUCTION MOTOR ASSY HARDWARE KIT)
14	145 5913 000	1	DOWEL
16	145 8024 000	2	TAB
17	xxx xxxx xxx	4	WASHER FLAT (REDUCTION MOTOR ASSY HARDWARE KIT)
18	xxx xxxx xxx	3	WASHER FLAT (REDUCTION MOTOR ASSY HARDWARE KIT)
19	145 9774 000	1	KEY
20	145 9899 000	1	TAB
21	146 0514 000	1	PULLEY
22	146 0516 000	1	PULLEY
23	146 0523 000	1	GEAR
24	146 0524 000	1	GEAR
25#	1463248000	1	REDUCTION GEAR COMPLETE
26	146 0689 000	1	FAN
27	146 0538 000	1	SUPPORTING PLATE
28	146 0539 000	1	BRACKET ELECTRIC MOTOR
29	146 0540 000	1	TRANSMISSION SHAFT
30	146 0541 000	1	BUSHING
31	146 0542 000	1	MAIN BROOM SHAFT
32	146 0605 000	1	GEAR COVER
33	146 0616 000	1	SPACER
34	146 0619 000	1	KEY
35	146 0621 000	1	DOWEL
36	146 0531 000	1	ELECTRIC MOTOR 600W
[37]	145 5042 000	4	CARBON BRUSH (FOR 146 0531 000)
38	146 0769 000	1	TAB
[39]	146 0814 000	1	REDUCTION MOTOR ASSY HARDWARE KIT (1,2,3,4,5,8,11,12,13,17,18)



Item No.	Ref. No.	Qty	Description
1	xxx xxxx xxx	3	SCREW M4X12 THD FORM (MISCELLANEOUS HARDWARE KIT)
2	145 4806 000	1	PAPER FILTER STD
2*	146 0368 000	1	POLYESTER FILTER
2*	145 4746 000	1	POLYESTER FILTER BIA
3	146 0573 000	1	FILTER HOOK
4	146 0574 000	1	FILTER FRAME
5	146 0607 000	1	FAN PROTECTION
6	146 0629 000	1	FILTER GASKET
7	146 0630 000	1	HOPPER GASKET
8	xxxxxxx	1	NUT HEX M10 (MANUAL FILTER SHAKER KIT)
9	xxx xxxx xxx	1	SPRING (MANUAL FILTER SHAKER KIT)
10	xxx xxxx xxx	1	NUT HEX M6 (MANUAL FILTER SHAKER KIT)
11	xxx xxxx xxx	1	WASHER (MANUAL FILTER SHAKER KIT)
12	xxx xxxx xxx	1	KNOB M6 (MANUAL FILTER SHAKER KIT)
13	xxx xxxx xxx	1	FILTER SHAKER BUSHING (MANUAL FILTER SHAKER KIT)
14	xxx xxxx xxx	1	FILTER SHAKER MASS (MANUAL FILTER SHAKER KIT)
15	xxx xxxx xxx	1	WASHER FLAT (MANUAL FILTER SHAKER KIT)
16	xxx xxxx xxx	1	SCREW M6X110 (MANUAL FILTER SHAKER KIT)
17	146 0782 000	1	PRE-FILTER
[18]*	146 0663 000	1	ELECTRIC FILTER SHAKER KIT
[19]	146 0819 000	1	MANUAL FILTER SHAKER KIT (8,9,10,11,12,13,14,15,16)
[20]	146 0816 000	1	MISCELLANEOUS HARDWARE KIT [(2,PAGE 11)-(1, PAGE 19)-(1,PAGE 21)-(1-2-3,PAGE 31)]

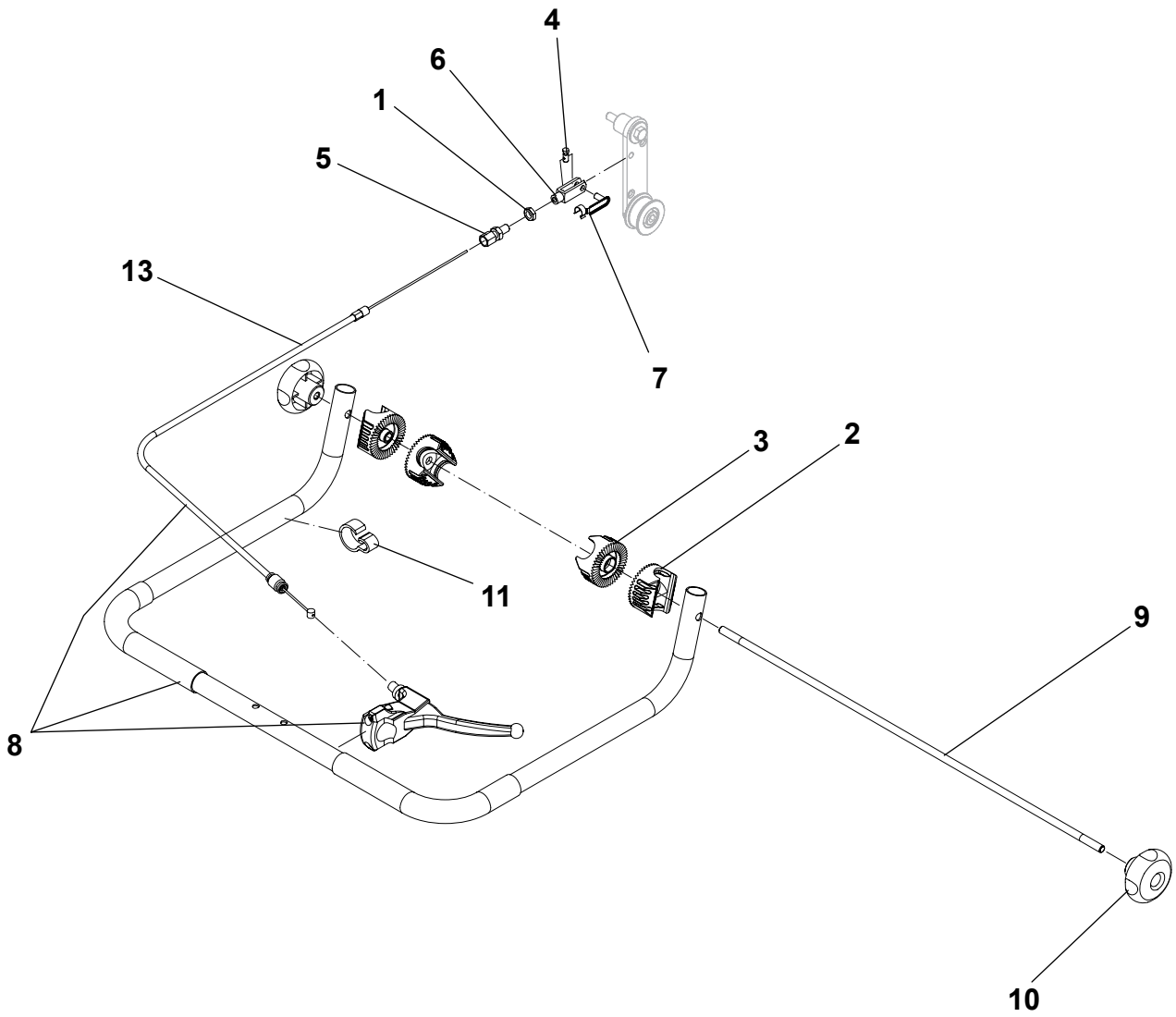
HANDLE SYSTEM

2002-06

20

Terra™ 128B

2008-04



2002-06	HANDLE SYSTEM		
2008-04	Terra™ 128B		21

Item No.	Ref. No.	Qty	Description
1	xxxxxxx	1	NUT (MISCELLANEOUS HARDWARE KIT)
2	56264118	2	RATCHET
3	56264123	2	RATCHET
4	145 8110 000	1	CLAMP
5	145 9283 000	1	ADJUSTER
6	145 9409 000	1	FORK
7	145 9410 000	1	CLIPS
8	146 0526 000	1	HANDLE COMPLETE (INCLUDES 146 1173 000)
9	146 0534 000	1	HANDLE SHAFT
10#	146 1852 000	2	KNOB
11	146 0763 000	1	CABLE LOCKING
[12]	146 0816 000	1	MISCELLANEOUS HARDWARE KIT [(2,PAGE 11)-(1, PAGE 19)-(1,PAGE 21)-(1-2-3,PAGE 31)]
13	146 0568 000	1	DRIVE CABLE (BEFORE SERIAL NUMBER 1664585)
13	146 1173 000	1	DRIVE CABLE (FROM SERIAL NUMBER 1664585)

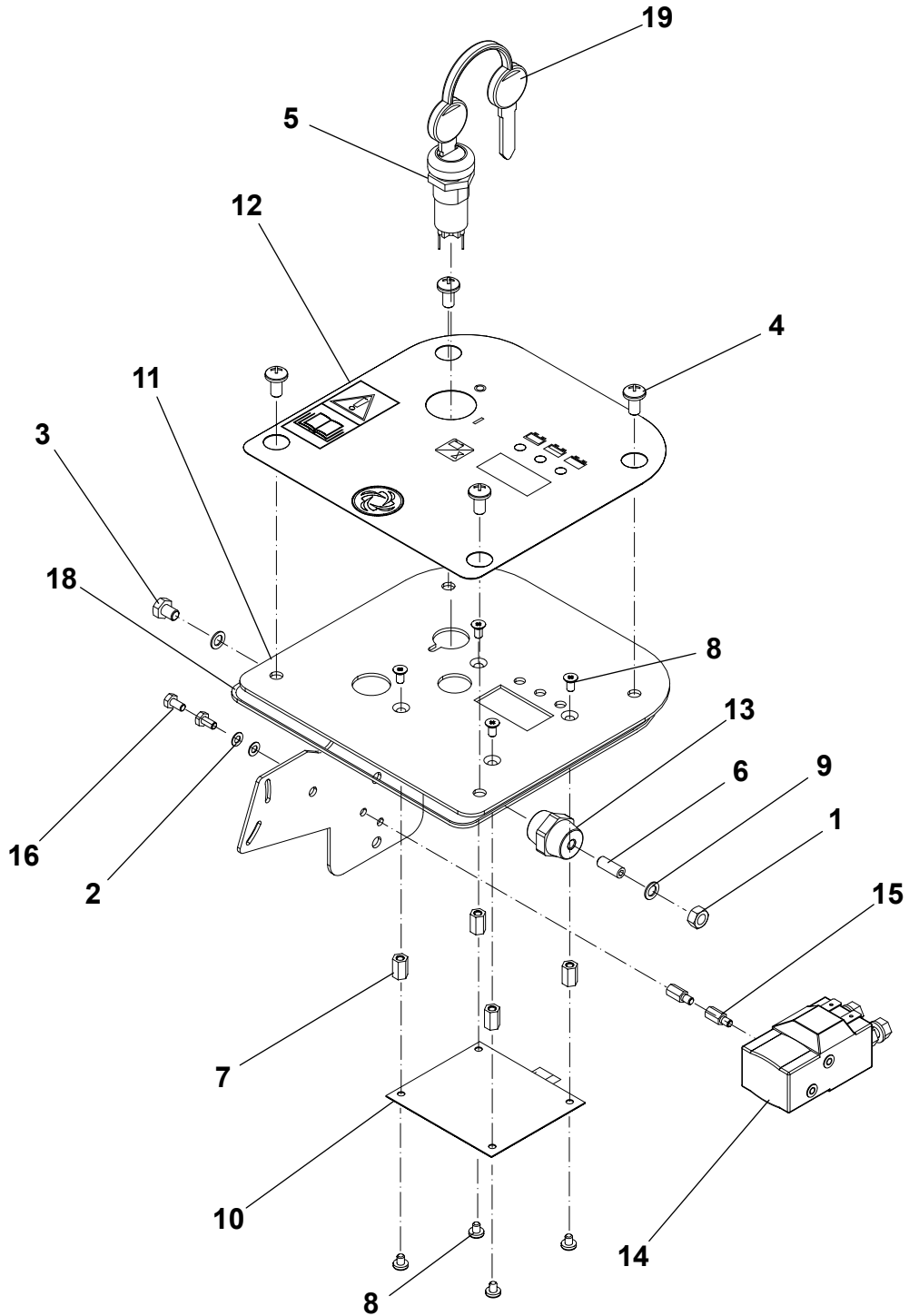
CONTROL PANEL ASSY

2002-06

22

Terra™ 128B

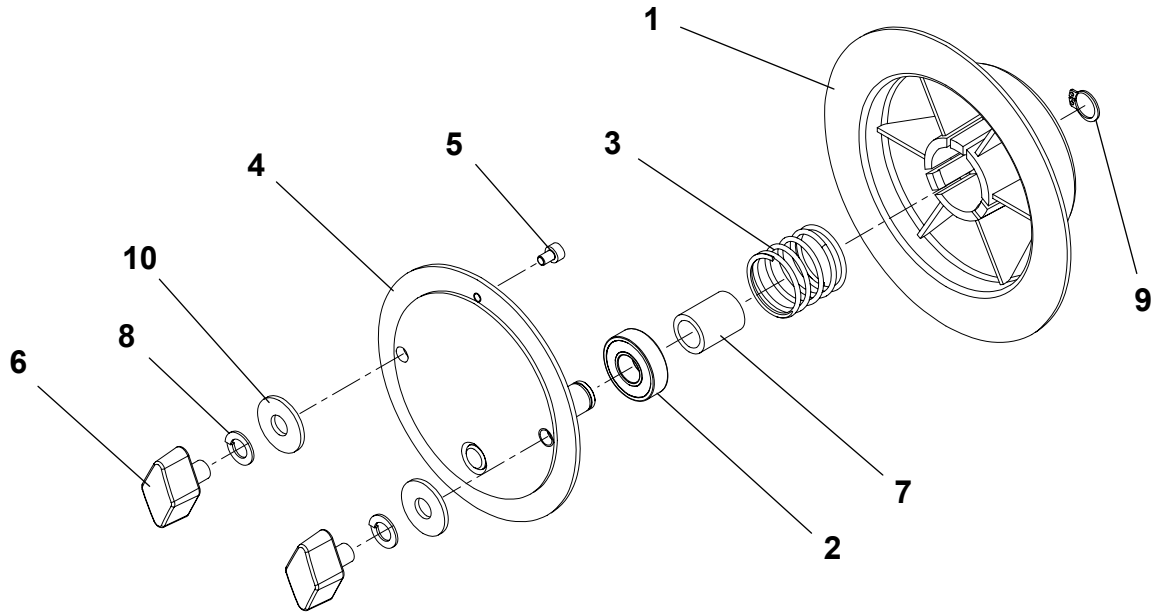
2008-04



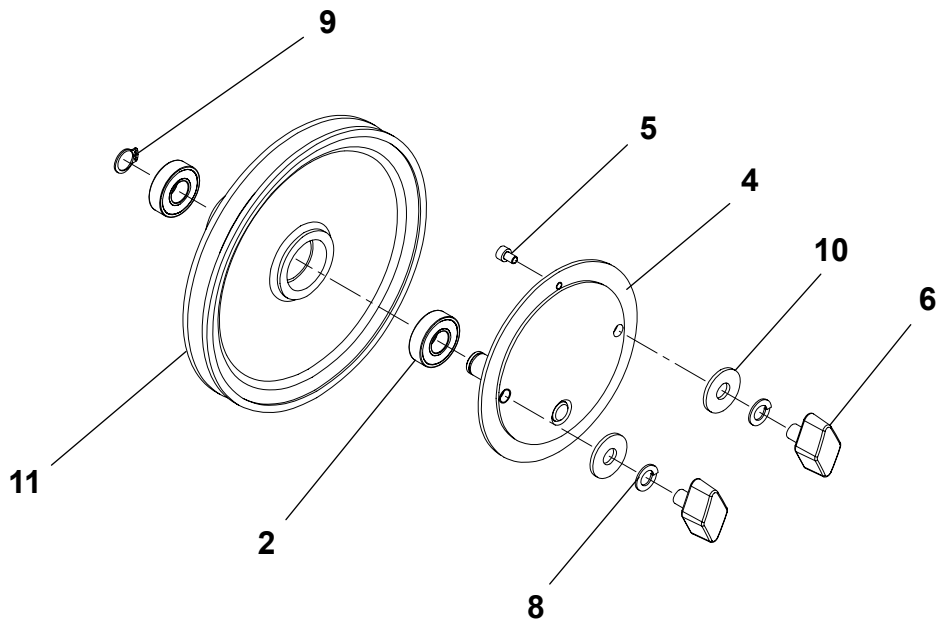
2002-06	CONTROL PANEL ASSY		
2008-04	Terra™ 128B		23

Item No.	Ref. No.	Qty	Description
1	xxxxxxx	1	NUT (CONTROL PANEL ASSY HARDWARE KIT)
2	xxxxxxx	2	WASHER (CONTROL PANEL ASSY HARDWARE KIT)
3	xxxxxxx	1	SCREW M6X10 (CONTROL PANEL ASSY HARDWARE KIT)
4	xxxxxxx	4	SCREW M6X12 (CONTROL PANEL ASSY HARDWARE KIT)
5#	146 2888 000	1	KEY SWITCH (W/2 KEYS)
6	146 1678 000	1	DOWEL
7	146 0657 000	4	SPACER HEX. PLASTIC
8	xxx xxxx xxx	8	SCREW M4X8 (CONTROL PANEL ASSY HARDWARE KIT)
9	xxx xxxx xxx	2	WASHER (CONTROL PANEL ASSY HARDWARE KIT)
10	146 0570 000	1	ELECTRONIC CARD
11	146 0576 000	1	CONTROL PANEL
12	146 0584 000	1	CONTROL PANEL DECAL
13	146 0708 000	1	INSULATOR
14	146 0626 000	1	ELECTROMAGNETIC SWITCH
15	xxx xxxx xxx	2	SPACER (CONTROL PANEL ASSY HARDWARE KIT)
16	xxx xxxx xxx	2	SCREW M4X8 (CONTROL PANEL ASSY HARDWARE KIT)
18	146 0697 000	1	GASKET
19#	146 2887 000	1	REPLACEMENT KEY (FOR 146 2888 000)
[20]	146 0815 000	1	CONTROL PANEL ASSY HARDWARE KIT (1,2,3,4,8,9,15,16)

Left hub assembly



Right hub assembly



Item No.	Ref. No.	Qty	Description
1	xxx xxxx xxx	1	LEFT HUB (LEFT HUB ASSY KIT)
2	xxx xxxx xxx	3	BALL BEARING (LEFT-RIGHT HUB ASSY KIT)
3	xxx xxxx xxx	1	SPRING (LEFT HUB ASSY KIT)
4	xxx xxxx xxx	2	PIN WELDMENT (LEFT-RIGHT HUB ASSY KIT)
5	xxx xxxx xxx	2	SCREW HEX HD M4X6 (LEFT-RIGHT HUB ASSY KIT)
6	xxx xxxx xxx	4	KNOB (LEFT-RIGHT HUB ASSY KIT)
7	xxx xxxx xxx	1	SPACER (LEFT HUB ASSY KIT)
8	xxx xxxx xxx	4	WASHER (LEFT-RIGHT HUB ASSY KIT)
9	xxx xxxx xxx	2	RETAINING RING (LEFT-RIGHT HUB ASSY KIT)
10	xxx xxxx xxx	4	WASHER FLAT (LEFT-RIGHT HUB ASSY KIT)
11	xxx xxxx xxx	1	PULLEY (RIGHT HUB ASSY KIT)
12	146 0818 000	1	LEFT HUB ASSY KIT (1,2,3,4,5,6,7,8,9,10)
13	146 0817 000	1	RIGHT HUB ASSY KIT (2,4,5,6,8,9,10,11)

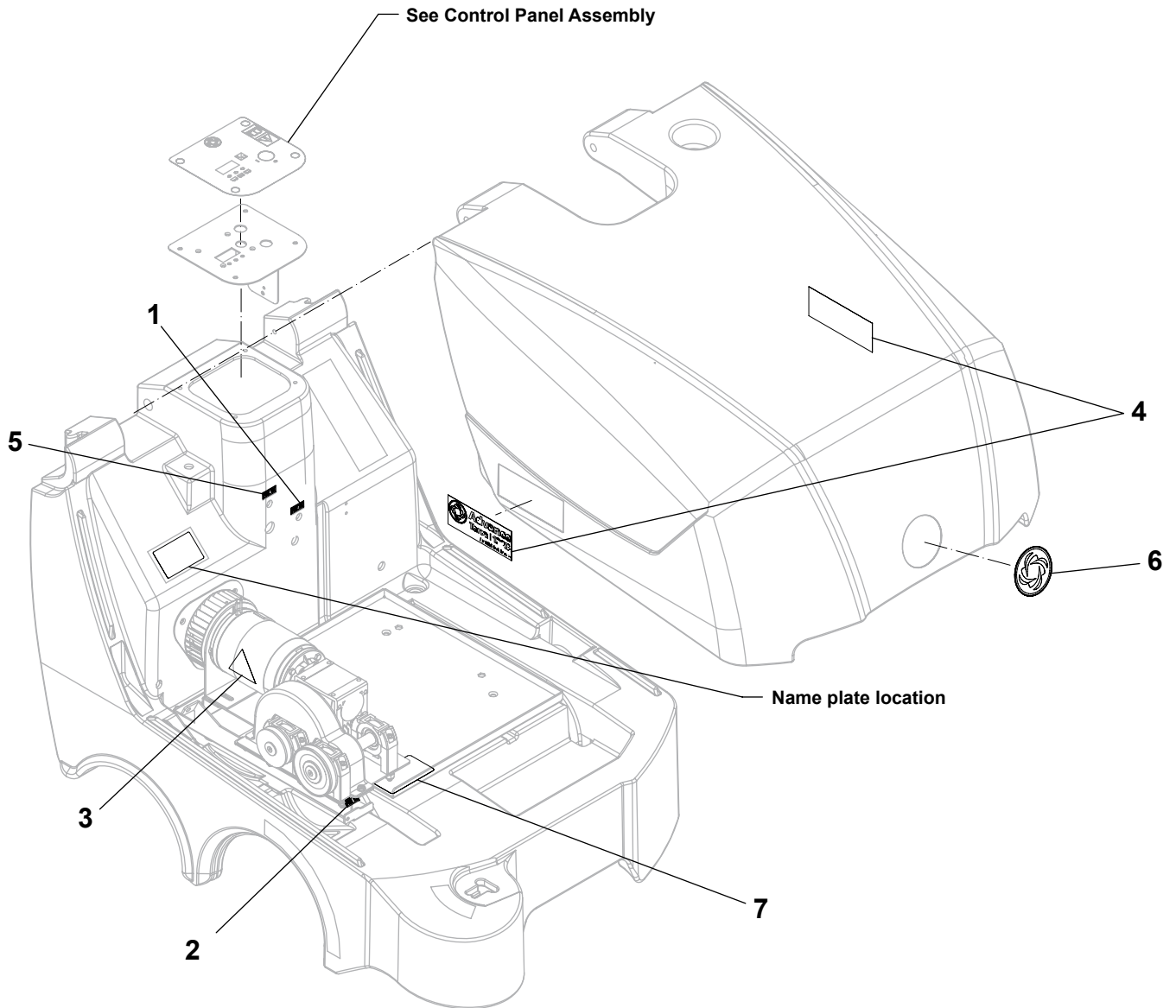
DECALS

2002-06

26

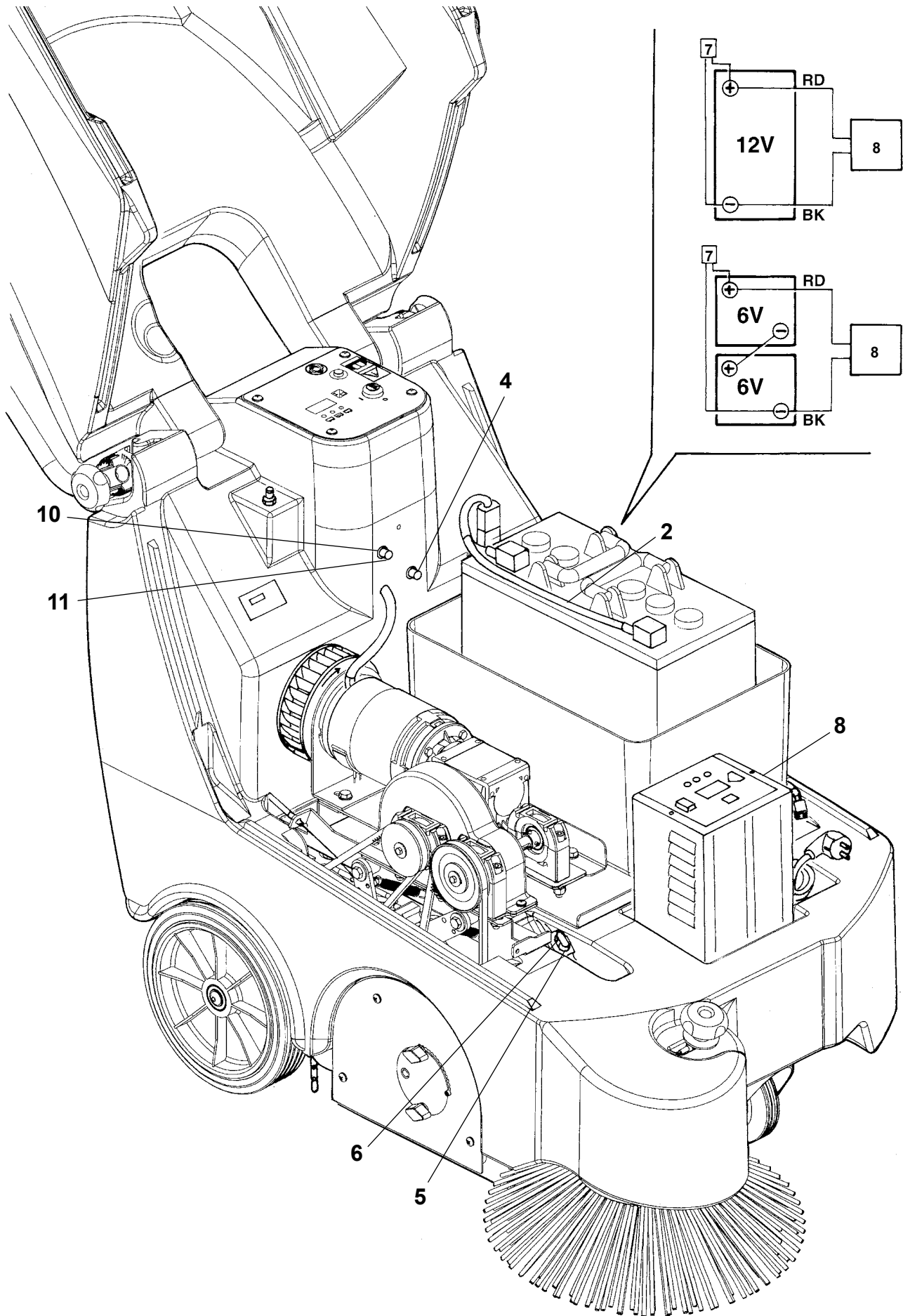
Terra™ 128B

2008-04



2002-06	DECALS			
	Terra™ 128B			27

Item No.	Ref. No.	Qty	Description
1	145 0578 000	1	LABEL FUSE 60A (BEFORE SERIAL NUMBER 1697510)
1	146 1201 000	1	LABEL CIRCUIT BREAKER 70A (FROM SERIAL NUMBER 1697510)
2	145 1355 000	1	LABEL FUSE 15A
3	145 1431 000	1	LABEL OF MOVING PARTS
4	146 0718 000	2	LABEL ADVANCE TERRA 128B
5	145 0577 000	1	LABEL FUSE 10A
6	L08812933	1	LABEL LOGO
7	146 0832 000	1	LABEL WEAR PARTS



2002-06	ELECTRICAL PARTS			
2008-04	Terra™ 128B			29

Item No.	Ref. No.	Qty	Description
[1]	146 0598 000	1	MACHINE WIRING
2	146 0599 000	1	BATTERY WIRING
[3]	146 0659 000	1	MAIN FUSE HOLDER (BEFORE SERIAL NUMBER 1697510)
4#	909 6218 000	2	MAIN FUSE (BEFORE SERIAL NUMBER 1697510)
4	146 1200 000	1	CIRCUIT BREAKER 70A (FROM SERIAL NUMBER 1697510)
5	146 0660 000	1	SIDE BRUSH FUSE HOLDER
6	145 9853 000	1	FUSE 15A
8	146 0670 000	1	BATTERY CHARGER 12V 20A-110V
[9]	145 3735 000	1	CHARGER CONNECTION
10	146 0716 000	1	FUSE HOLDER
11	145 1726 000	1	FUSE 10A

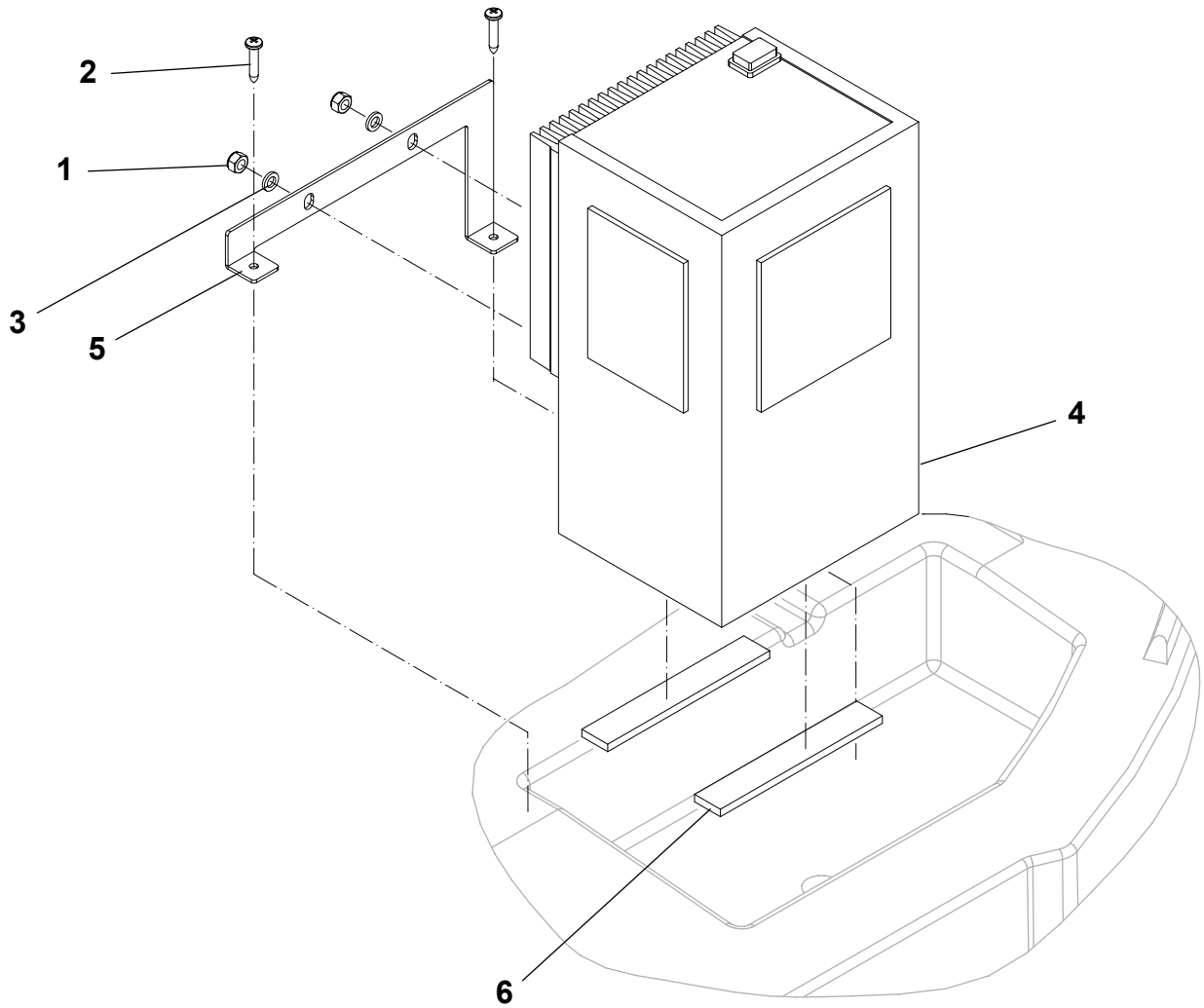
BATTERY CHARGER ASSY

2002-06

30

Terra™ 128B

2008-04



Item No.	Ref. No.	Qty	Description
1	xxxxxxx	2	NUT, SELFLOCKING M6 (MISCELLANEOUS HARDWARE KIT)
2	xxx xxxx xxx	2	SCREW, 4X8 THD FORM (MISCELLANEOUS HARDWARE KIT)
3	xxx xxxx xxx	2	WASHER, FLAT 6X12,5 (MISCELLANEOUS HARDWARE KIT)
4	146 0670 000	1	BATTERY CHARGER 12V 20A-110V
5	146 0655 000	1	BRACKET
6	146 0656 000	2	SEAL
[7]	146 0816 000	1	MISCELLANEOUS HARDWARE KIT [[2,PAGE 11)-(1, PAGE 19)-(1,PAGE 21)-(1-2-3,PAGE 31]]

CBSW2 NA 12V 20A IUJA Wet / Gel

CBSW2 NA battery charger has a diagram block described on the figure below. (Fig.1)

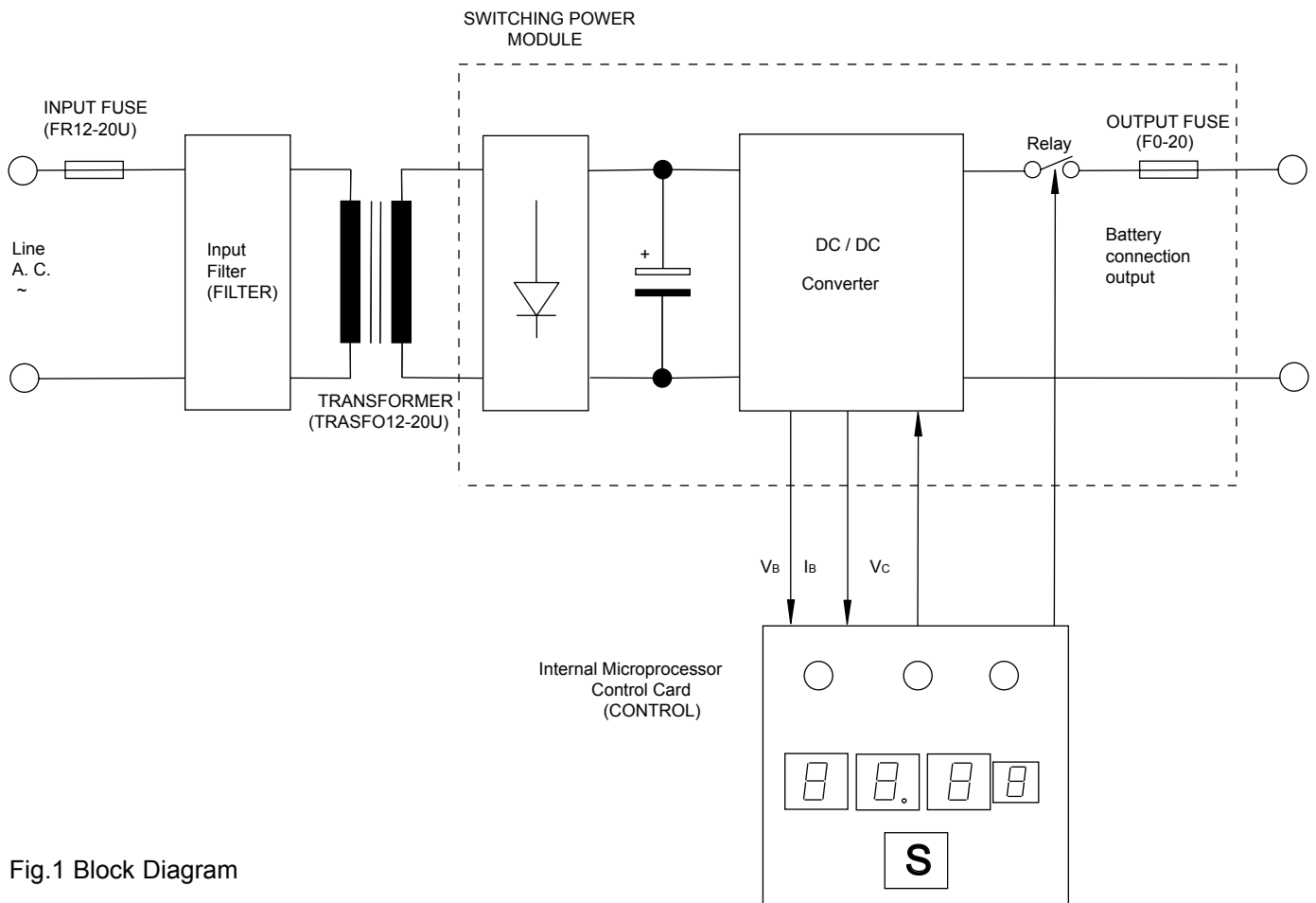


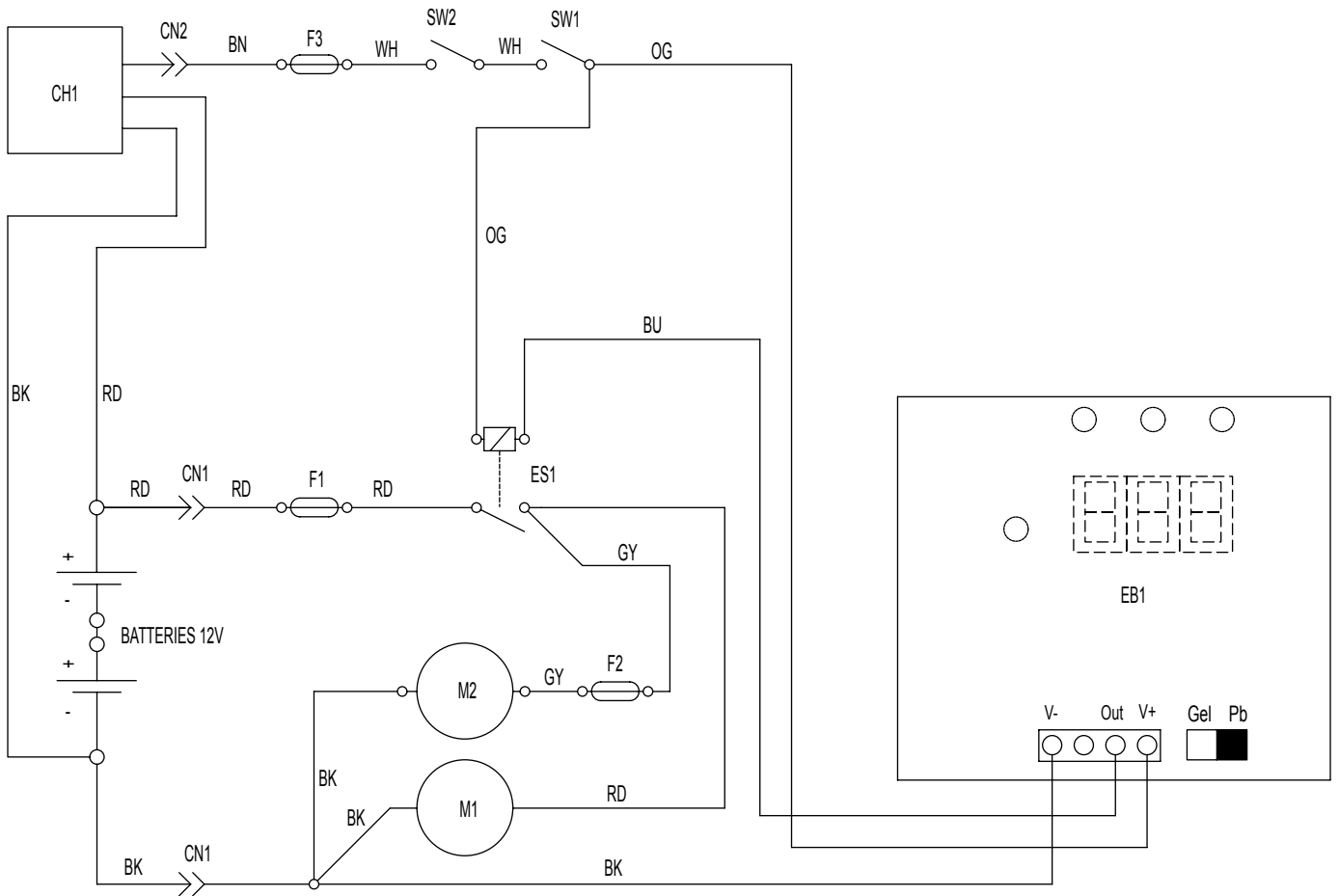
Fig.1 Block Diagram

The Switching Power Module (PWMOD12-20) rectifies the transformer voltage and it also makes a DC/DC conversion. The output of the DC/DC converter is connected to the battery to be charged. The value of charging current depends on the control signal (V_c) that is provided by the Microprocessor Internal Control Card (CONTROL). V_c is related to the actual values of the battery voltage (V_b) and battery current (I_b) that are inputs of the control card.

The Internal Microprocessor Control Card controls the charging process with the particular charging curve set by the dipswitch configuration and displays the most important parameters of the charging cycle.

AVAILABLE SPARE PARTS

DESCRIPTION	NILFISK-ADVANCE PART NO.	QUANTITY	DIAGRAM REFERENCE
8 Amp input fuse	145 1724 000	1	FR12-20U
32 Amp output fuse	146 0795 000	1	FO-20
1,6 Amp control fuse	146 0794 000	1	not shown
Transformer	146 0796 000	1	TRASFO12-20U
Control Card	146 0797 000	1	CONTROL
Input filter	146 0798 000	1	FILTER
Power cable	146 0799 000	1	not shown
Fan	146 0800 000	1	not shown
Wet/Gel switch	146 0801 000	1	not shown



COLORS CODES			COMPONENTS		
BK	BLACK	nero	CH1	BATTERY CHARGER	146 0670 000
BU	BLUE	azzurro	CN1	BATTERY CONNECTOR	146 0747 000
BN	BROWN	marrone	CN2	CHARGER CONNECTOR	[145 3735 000]
GN	GREEN	verde	EB1	ELECTRONIC BOARD	146 0570 000
GY	GREY	grigio	ES1	ELECTROMAGNETIC SWITCH	146 0626 000
OG	ORANGE	arancio	F1	CIRCUIT BREAKER 70A	146 1200 000
PK	PINK	rosa	F1	MAIN FUSE 60A	[146 0571 000]
RD	RED	rosso	F2	SIDE BRUSH FUSE (15A)	145 9853 000
VT	VIOLET	viola	F3	SIGNAL FUSE (10A)	145 1726 000
WH	WHITE	bianco	M1	MAIN MOTOR(Traction main broom)	146 0531 000
YE	YELLOW	giallo	M2	EXT BRUSH MOTOR	146 0532 000
			SW1	KEY SWITCH	145 0372 000
			SW2	HOOD SAFETY SWITCH	146 0565 000

from serial no.1697510
before serial no.1697510

RECOMMENDED SPARE PARTS

2002-06

34

Terra™ 128B

2008-04

Item No.	Ref. No.	Qty	Description
WEAR PARTS			
1	145 4806 000	1	FILTER PAPER STD
2	146 0586 000	1	NON MARKING REAR SKIRT STD
3	146 0587 000	2	NON MARKING SIDE SKIRT LEFT/ RIGHT
4	146 0677 000	1	MAIN BROOM Ø 245X500 NYLON, 145 0268 000 RIGHT HUB
5#	909 6218 000	1	FUSE 60A (BEFORE SERIAL NUMBER 1697510)
5	146 1200 000	1	CIRCUIT BREAKER 70A (FROM SERIAL NUMBER 1697510)
6	145 9853 000	1	FUSE 15A
7	146 0678 000	1	SIDE BROOM STD Ø 347 MM NYLON
8	146 0628 000	1	NON MARKING FRONT SKIRT STD
9	145 1726 000	1	FUSE 10A
ORDINARY MAINTENANCE			
1	145 0274 000	2	BELT TENSION SPRING
2	146 0150 00	1	MAIN BROOM BELT
3	146 0807 000	1	DRIVE BELT
4	146 0519 000	1	SIDE BROOM HUB
5	145 5042 000	4	ELECTRIC DRIVE MOTOR CARBON BRUSHES
EXTRAORDINARY MAINTENANCE			
1	146 0513 000	1	REAR WHEEL RIGHT
2	146 0518 000	1	REAR WHEEL LEFT
3	146 0568 000	1	DRIVE CABLE (BEFORE SERIAL NUMBER 1664585)
3	146 1173 000	1	DRIVE CABLE (FROM SERIAL NUMBER 1664585)
4	146 0532 000	1	REDUCTION GEAR MOTOR
5	146 0626 000	1	ELECTROMAGNETIC SWITCH
6	146 0570 000	1	ELECTRONIC CARD
7	146 0565 000	1	HOOD SAFETY SWITCH
8	145 0270 000	3	BALL BEARING MAIN BROOM
9	145 1123 000	3	BALL BEARING TRANSMISSION
10	145 9186 000	2	BALL BEARING BELT TENSIONER
11	146 0629 000	1	FILTER GASKET
12	146 0630 000	1	HOPPER GASKET
OPTIONS			
	146 0554 000	1	FRONT/REAR SKIRT (SBR-STIFFER TYPE)
	146 0555 000	2	SIDE SKIRT (SBR-STIFFER TYPE)
	146 0663 000	1	ELECTRIC FILTER SHAKER KIT
	146 0569 000	1	LOCKING FRONT CASTOR WHEEL
	146 0368 000	1	POLYESTER FILTER - ANTISTATIC
	145 4746 000	1	POLYESTER FILTER- BIA C APPROVED
	145 4792 000	1	MAIN BROOM (Ø265 MM-PPL0,7, 145 5661 000 RIGHT HUB)
	145 4973 000	1	MAIN BROOM (Ø265 MM-STEEL MIX, 145 5661 000 RIGHT HUB)
	146 0305 000	1	MAIN BROOM (Ø245 MM-NATURAL FIBER,145 5661 000 RIGHT HUB)
	146 0304 000	1	MAIN BROOM (Ø 245 MM-PPL 0,7, 145 5661 000 RIGHT HUB)
	145 4959 000	1	SIDEBROOMØ 420 MM-STEEL MIX
	145 4976 000	1	SIDEBROOMØ 420 MM-NATURAL FIBER
	145 1899 000	1	SIDEBROOMØ 420 MM-PPL



Nilfisk-Advance, Inc.

14600 21st Avenue North
Plymouth, MN, 55447-3408
www.nilfisk-advance.com

Phone: 800-989-2235

Fax: 800-989-6566

©2007 Nilfisk-Advance, Inc.,

Plymouth, MN 55447-3408

Printed in Italy