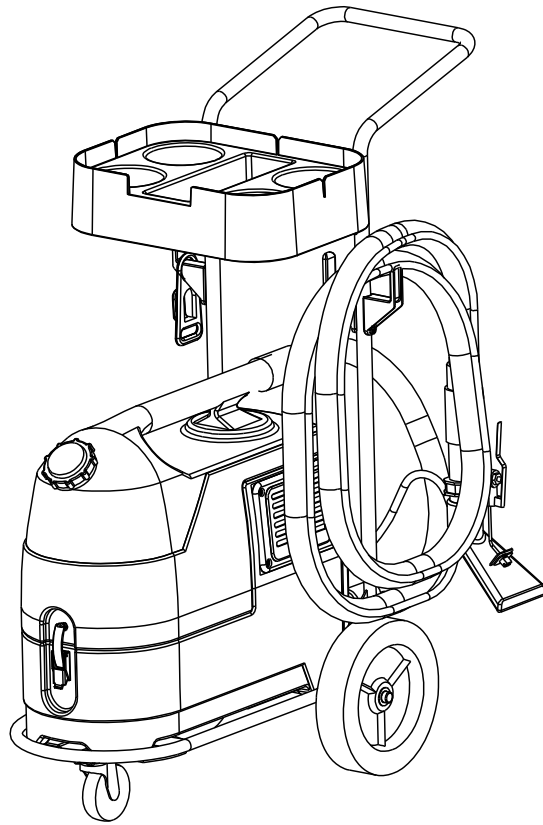


AquaSpot™



PARTS LIST

Advance MODEL 56220000



Advance

10/98 revised 10/10 FORM NO. 56042346

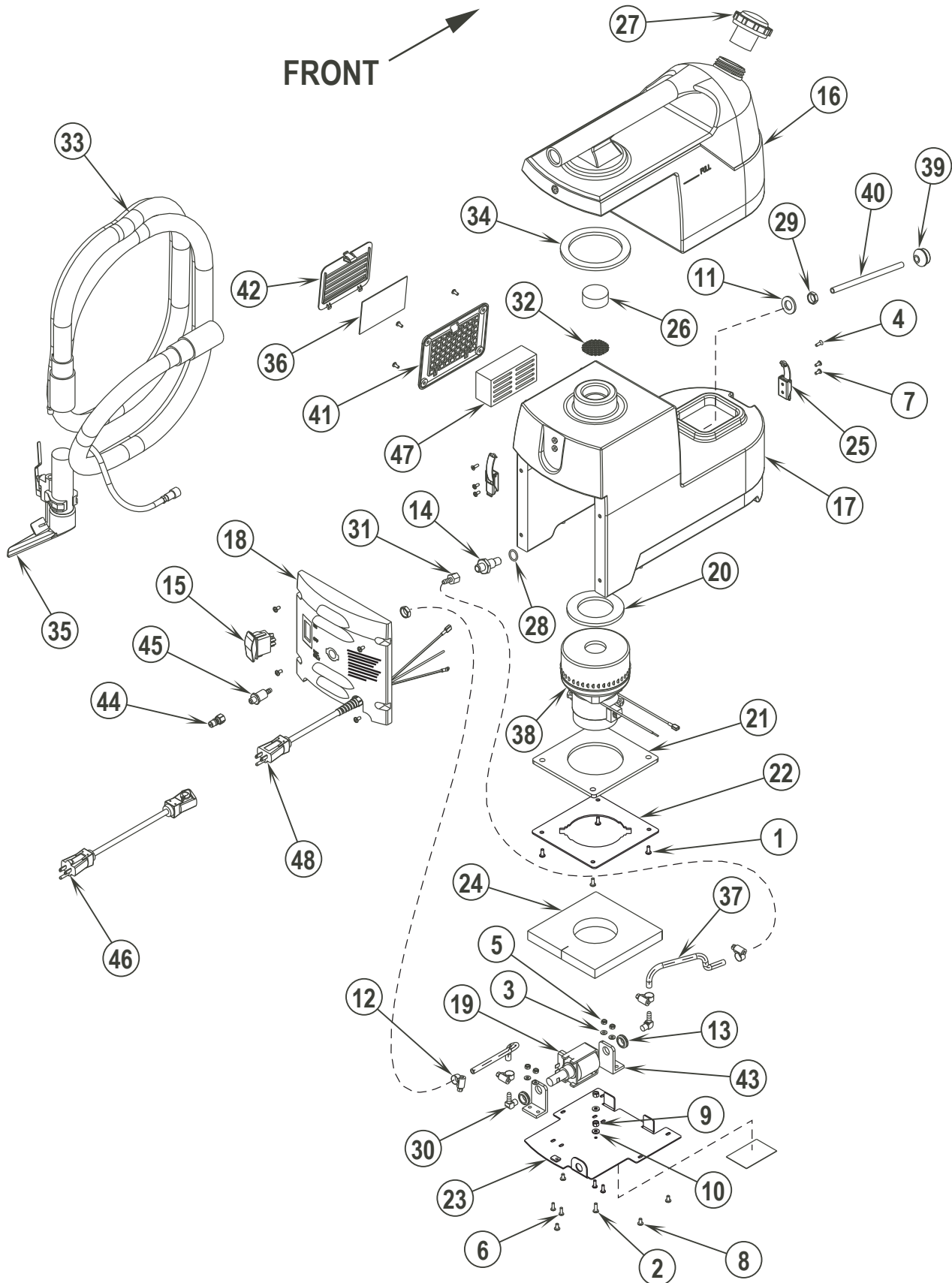
| | | | |
|-------|--------------------------|--|----------|
| 98-10 | TABLE OF CONTENTS | | |
| 10-10 | AquaSpot™ | | 3 |

| DESCRIPTION | PAGE |
|--------------------------------|-------------|
| AQUASPOT™ | 4-5 |
| CART ASSEMBLY (OPTIONAL) | 6-7 |
| WIRING DIAGRAM | 7 |

WHEN ORDERING PARTS

- * Use the part numbers from the “Ref. No.” columns in this parts list.
- * Specify the model and serial number of the machine.
- * Use the space below to record the model and serial number for future reference.

Model _____ Serial No. _____



| | | | | |
|-------|------------------|--|--|----------|
| 98-10 | AQUASPOT™ | | | |
| 10-10 | AquaSpot™ | | | 5 |

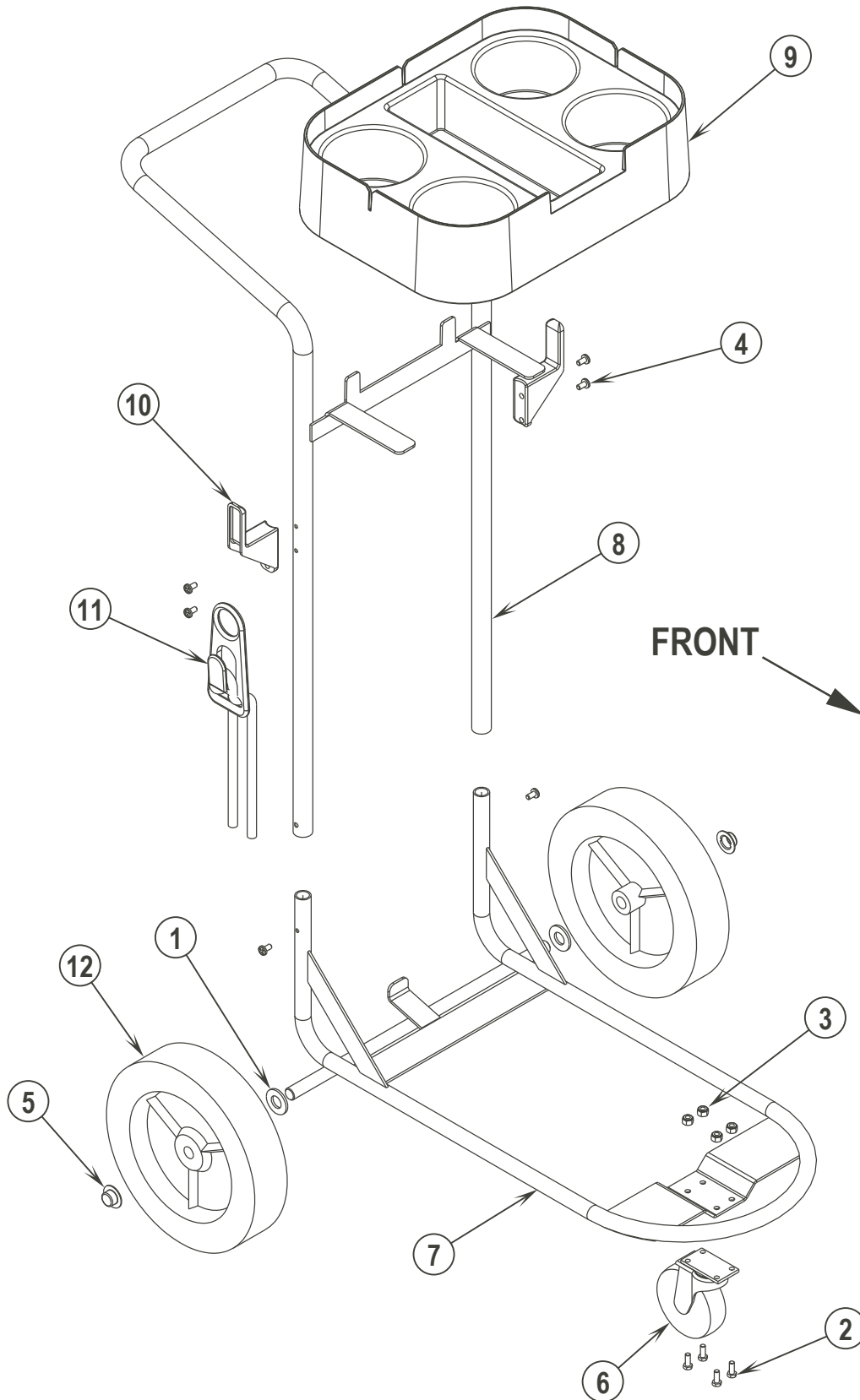
| Item | Ref. No. | Qty | Description | Item | Ref. No. | Qty | Description |
|------|----------|-----|--|------|----------|-----|---|
| | 56220000 | 1 | AquaSpot™ | 29 | 56745860 | 2 | Nut, Jam, 5/8-18 Brass |
| 1 | 56001993 | 4 | Scr, Pan Phil 10-24 x .50 | 30 | 56755726 | 2 | Barb, Hose Male |
| 2 | 56002124 | 1 | Scr, Pan Phil 10-24 x .62 | 31 | 56756360 | 1 | Barb, Hose Female |
| 3 | 56002140 | 4 | Wsh, Flt SAE #8 | 32 | 56220034 | 1 | Screen, Vac Intake |
| 4 | 56002396 | 2 | Scr, Flt Phil 8-32 x .50 | 33 | 56220035 | 1 | Hose Assy TSBUS2003-839 / NOTE 1 |
| 5 | 56002865 | 4 | Nut, Hex Nyl Loc-Thin 8-32 | * | 56220046 | 1 | Solution Hose Assy |
| 6 | 56002876 | 4 | Scr, Pan Phil SS 8-32 x .50 | * | 56220047 | 1 | Vacuum Hose Assy |
| 7 | 56003018 | 8 | Scr, Pan Phil SS 8-32 x .38 | * | 56478246 | 6 | Tie, Cable |
| 8 | 56003189 | 9 | Scr, Pan Phil SS 10-24 x .38 | 34 | 56220036 | 1 | Gasket, Tank Seal |
| 9 | 56009009 | 2 | Nut, Hex Machine 10-24 | 35 | 56220037 | 1 | Hand Tool TSBUS2003-839 |
| 10 | 56009011 | 2 | Wsh, Int Shprf #10 | | 56220109 | 1 | Upholstery Tool Assembly TSBUS2003-839 |
| 11 | 56009218 | 1 | Wsh, Flt .688 x 1.250 x .125 | 36 | 56220041 | A/R | Electrostat Exht. Filter (Pkg 10) |
| 12 | 56756364 | 4 | Clamp, Hose SAE #4 | 37 | 56220043 | 2 | Solution Feed Hose |
| 13 | 56157376 | 2 | Grommet | 38 | 56220045 | 1 | Vac Motor Assy |
| 14 | 56172075 | 1 | Nipple 1/4NPT x 5/8-18 | ** | 56220065 | 1 | Carbon Brush Set |
| 15 | 56220001 | 1 | Switch, Rocker | 39 | 56220048 | 1 | Strainer |
| 16# | FP550 | 1 | Tank, Recovery | 40 | 56220049 | 1 | Tube |
| 17# | FP573 | 1 | Tank, Solution | 41 | 56220050 | 1 | Bezel, Filter |
| 18 | 56220004 | 1 | Panel, Front Molded | 42 | 56220052 | 1 | Grill, Filter |
| 19 | 56220006 | 1 | Pump | 43 | 56220053 | 1 | Bracket, Kit |
| 20 | 56220007 | 1 | Gasket, Vac Seal Upper | 44 | 56220055 | 1 | Plug |
| 21 | 56220008 | 1 | Gasket, Vac Seal Lower | 45 | 56220058 | 1 | FTG 1/8NPT x 1/4 Barb |
| 22 | 56220009 | 1 | Vac Mount Plate | 46 | 56220061 | 1 | Cord Set, 16/3 x 25' Yel |
| 23 | 56220016 | 1 | Panel, Bottom | 47 | 56220062 | 1 | Foam, Vac Exhaust |
| 24 | 56220021 | 1 | Foam Air Difusser | 48 | 56220063 | 1 | Cord, Pigtail Assy |
| 25 | 56220023 | 2 | Latch | * | 56163228 | 1 | Bell Nut |
| * | 56220024 | 1 | Wire Assy (Blk 11") | | | | |
| 26 | 56220025 | 1 | Foam, Vac Intake | | | | |
| * | 56220026 | 1 | Wire Assy (Wht 6") | | | | |
| * | 56220027 | 1 | Wire Assy (Grn/Yel 14") | | | | |
| * | 56220028 | 1 | Wire Assy (Blk 4") | | | | |
| * | 56220029 | 1 | Wire Assy (Blk 4" & Blk 5") | | | | |
| 27 | 56220066 | 1 | Cap | | | | |
| 28 | 56742552 | 1 | O-Ring -114 NBR 70 | | | | |
| ** | 56220070 | 1 | Upholstery Tool (requires 56220075 before SN1646179) | | | | |
| ** | 56262207 | 1 | Stand-Up Wand Kit (requires 56220075 before SN1646179) | | | | |
| ** | 56220075 | 1 | Quick Disconnect Adapter Kit (only required for machines built prior to SN1646179) | | | | |

* = Not Shown

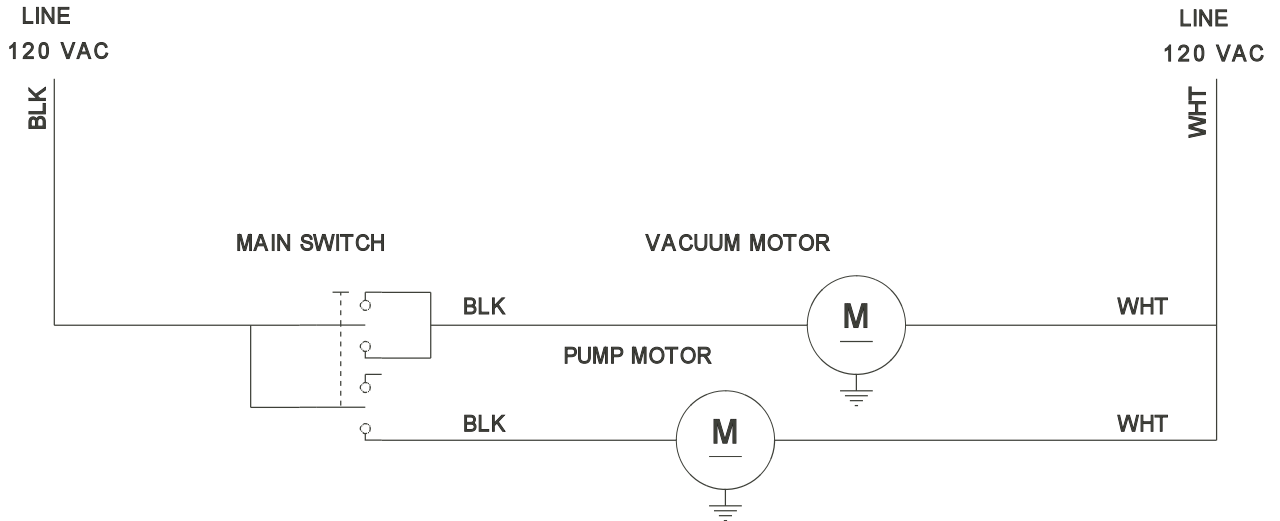
** = Optional Accessory

= Revised or new since last update

NOTE 1: When using the new style Hose Assembly **PN56220035** with the old style Hand Tool **PN56220037**, you will need to remove one of the quick disconnect fittings from the solution hose.



| Item | Ref. No. | Qty | Description |
|------|----------|-----|------------------------------------|
| | 56220018 | 1 | Cart Assembly |
| 1 | 56001879 | 2 | Wsh, Flt SAE 1/2 |
| 2 | 56002503 | 4 | Scr, Hex Hd 10-24 x .50 |
| 3 | 56002768 | 4 | Nut, Hex Nyl Loc 10-24 |
| 4 | 56009030 | 6 | Scr, Pan Phil Thd Form 10-24 x .38 |
| 5 | 56009097 | 2 | Nut, Push Cap 1/2 |
| 6 | 56201693 | 1 | Caster Swiv 3.0 x .81 |
| 7 | 56220017 | 1 | Chassis Weld't |
| 8 | 56220020 | 1 | Handle Weld't |
| 9 | 56220022 | 1 | Molded Tray |
| 10 | 56262518 | 2 | Hook, Cord |
| 11 | 56262535 | 1 | Strain Relief |
| 12 | 56346594 | 2 | Wheel, 8 Inch |



| Item | Ref. No. | Qty | Description |
|------|----------|-----|------------------|
| | 56220001 | 1 | Main Switch |
| | 56220045 | 1 | Vacuum Motor |
| ** | 56220065 | 1 | Carbon Brush Set |
| | 56220006 | 1 | Pump Motor |

** = Optional Accessory



Advance

14600 21st Avenue North
Plymouth, MN 55447-3408

www.advance-us.com

Phone: 800-989-2235

Fax: 800-989-6566

©2010 Nilfisk-Advance, Inc.

A Nilfisk-Advance Brand