

# Eagle Power™ Products Group



**TK500ET**  
**TK500GT**

---

## Technical & Parts Manual

---

### READ THIS MANUAL

This manual has important information for the safe operation and use of the Eagle Power Products TK500ET/TK500GT floor sweepers. Failure to read this manual before operating, attempting to service or perform maintenance on any units could result in injury to you or other personnel; damage to the equipment or property. You must have training in the operation of this unit before using it. If you or your operator(s) cannot read English, have this manual explained fully before attempting to operate the machine.

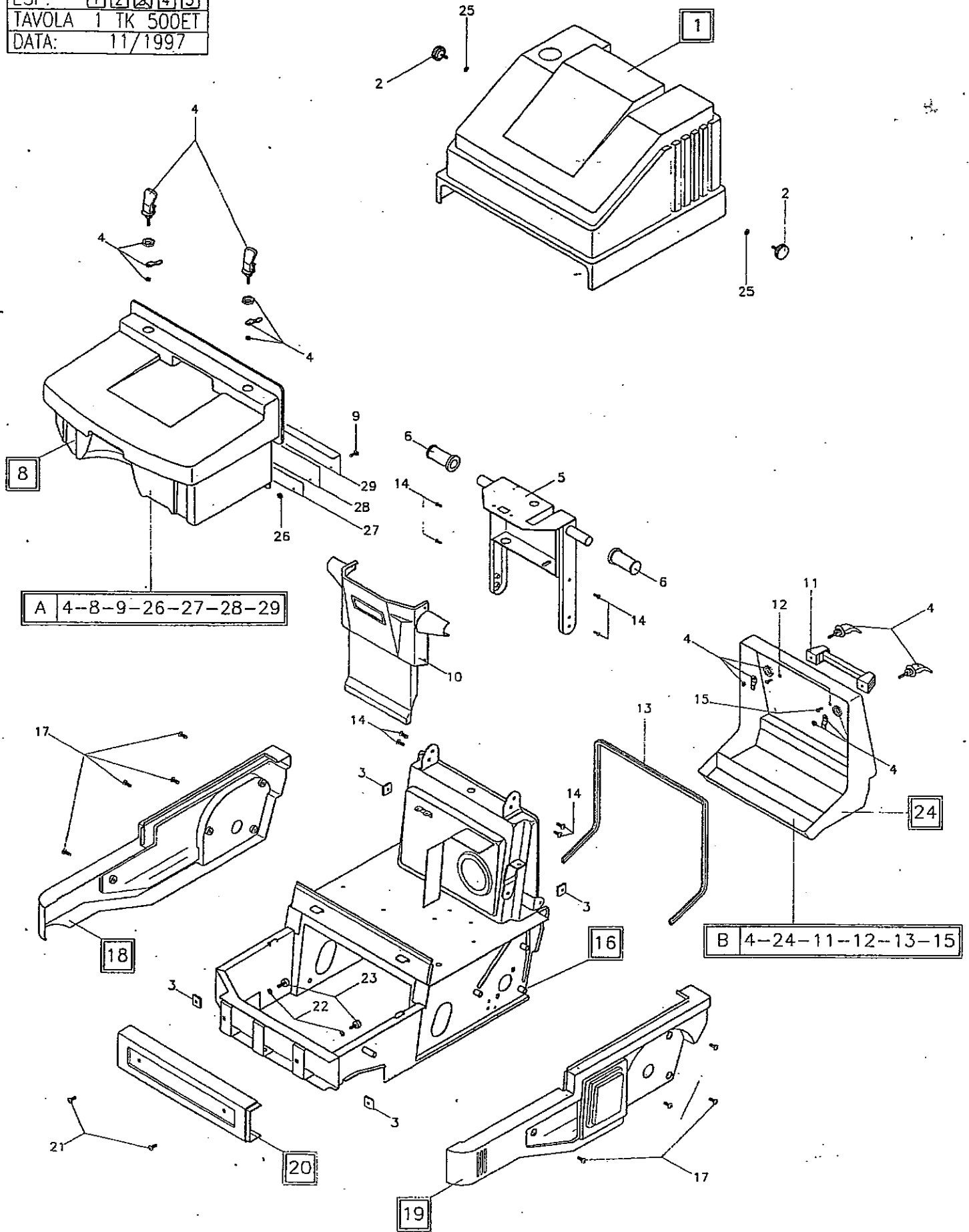
All directions provided in this manual are as seen from the operator's position at the rear of the machine. For additional manuals write to:

Eagle Power Products, 1174 Northland Dr., Mendota Heights, MN. 55120

© 1999 Eagle Power Products

**TECHNICAL & PARTS MANUAL**

COD. 9.600.5001  
 ESP.  1  2  4  5  
 TAVOLA 1 TK 500ET  
 DATA: 11/1997



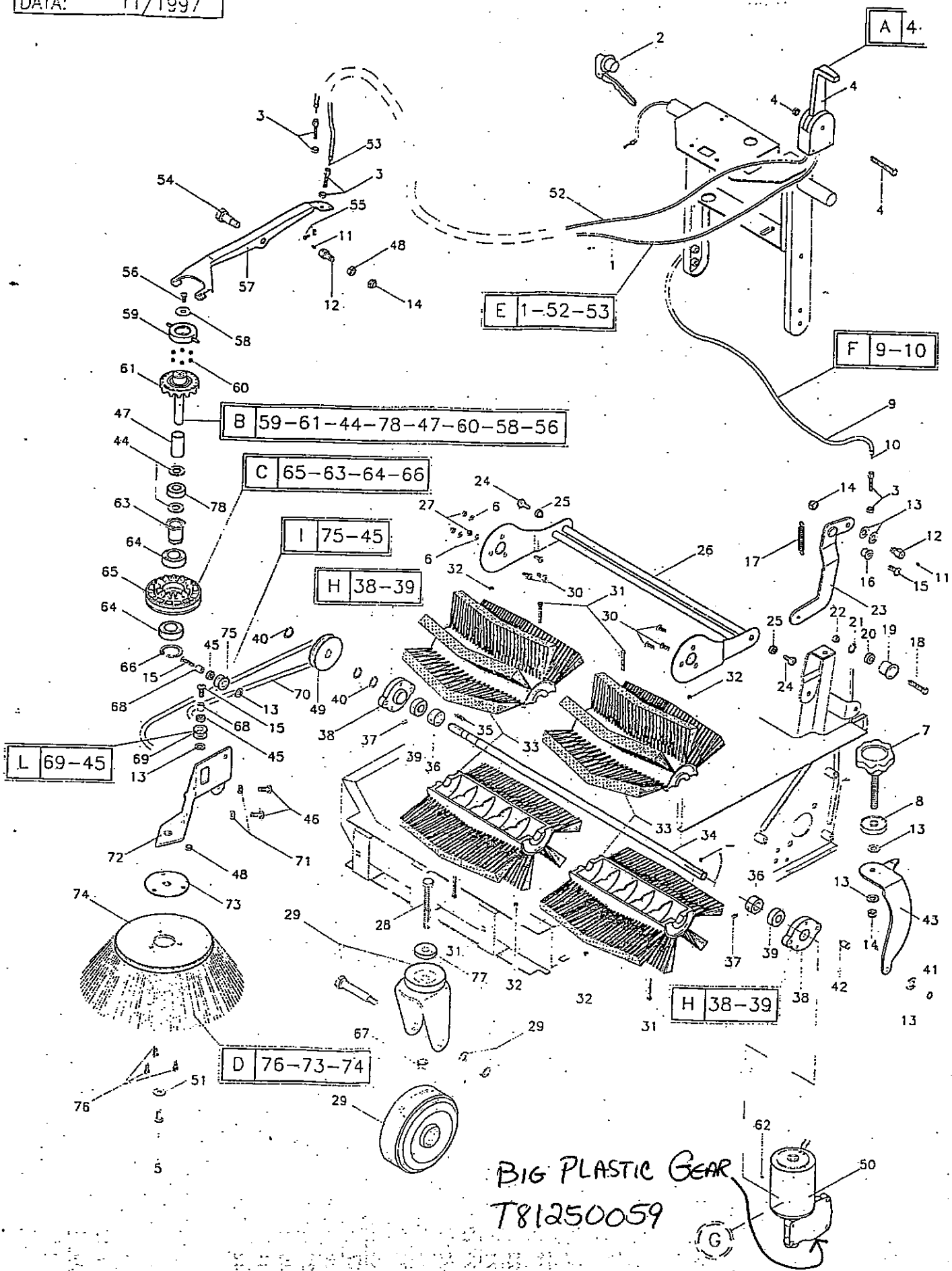
# TK500 - Page 1 - Ref.

EF.	PART #	QTY.	LOC.	DESCRIPTION
1	T82120024	1	A-4	RED UPPER COVER TK 500 E
2	T81320030	2	A-3	KNOB Ø 40 M8X15
3	T81105201	4	E-2	NUT M 8
4	T82300111	4	B-1	TEK LOCKING
5	T82200200	1	C-5	HANDGRIP TK500 E PAINTED
6	T81200040	2	C-3	RUBBER HANDLE COVER Ø 24/24
8	T82120022	1	C-1	RED FRONT DRAWER TK 500
9	T81105002	8	F-2	SCREW 4X16
10	T82120235	1	D-3	GREY CABLE CASING FOR THE HANDLE
11	T82310097	1	D-5	COMPLETE HANDLE L 183
12	T81105325	2	D-5	WASHER 6X24X2
13	T82160090	1	D-4	REINFORCED GASKET
14	T81105236	8	D-3	SCREW 6X16
15	T81105361	2	D-5	SCREW 6,3X19
16	T82270082	1	E-3	FRAME TK 500 E
16	T82270062	1	E-3	FRAME TK 500 E RAL 7001
16	T82270099	1	E-3	FRAME TK 500 E BLACK
17	T81105230	8	D-1	SCREW 8X10
18	T82120021	1	E-1	GRAY RIGHT SIDE CASING TK500 E
19	T82120018	1	F-3	GRAY LEFT SIDE CASING TK 500 E
20	T82120019	1	F-2	GRAY FRONT CASING TK 500
21	T81105239	2	F-1	SCREW 8X16
22	T81105123	2	E-2	NUT M 6
23	T81370003	2	E-2	FOOT 20X9 M6X18
24	<del>T82120023</del>	1	D-5	GRAY BACK DRAWER TK 500 <i>T82120180</i>
25	T81105304	2	C-2	WASHER 8X17
26	T81105121	8	C-2	NUT M4
27	T82150023	1	C-2	FLAP FIXER TK.500
28	T82160042	1	C-2	FRONT DRAWER RUBBER TK 500
29	T82160043	1	C-2	FRONT DRAWER PARA TK 500
AV.1	T82300088R	A		TK 500 COMPLETE RED FRONT DRAWER
AV.1	<del>T82300088B</del>	B		TK 500 COMPLETE GREY BACK DRAWER

*T82310251*

*Complete Bumper  
T82310802*

COD. 9.600.5002  
 ESP. 1 3 4 5  
 TAVOLA 2 TK 500ET  
 DATA: 11/1997



BIG PLASTIC GEAR  
 T81250059

# TK500 - Page 2 - Ref.

REF.	PART #	QTY.	LOC.	DESCRIPTION
1	<del>T82125017A</del>	1	B-4	SIDE BRUSH SHEATHING <del>82230000</del>
2	T82310123	1	A-4	TRACTION HANDLE TK
3	T81105229	3	A-2	TURNER ADJUSTER 07
4	T81125005	1	A-5	SIDEBRUSH DRIVE LEVER
5	T81105162	1	F-1	SCREW 6X16
6	T81105303	6	C-3	WASHER 6X12
7	T81320031	1	D-5	HANDWHEEL, 0 60 12X67
8	T81110005	1	D-5	KNURLED RING NUT, 040 M12
9	T82125015	1	C-5	DRIVE CABLE SHEATH
10	T82125015C	1	C-5	DRIVE CABLE
11	T81105485	2	C-5	DOWEL 5X6
12	T82290004	2	C-5	WIRE FIXING SCREW
13	<del>T81105304</del>	<del>7</del>	C-5	WASHER 8X17, <del>82130006</del> Nylon washer
14	T81105124	3	C-5	BLOCK NUT M 8
15	T81105238	3	C-5	SCREW 8X25 <del>99308400</del> Long bolt or T81105066
16	T82110025	1	C-5	BELT TIGHTENER LEVER'S B
17	T82205005	1	C-5	TK 500 TRACTION SPRING
18	T82290001	1	D-5	FIXING SCREW BELT TIGHTENER ROLLER
19	T82250001	1	D-5	BELT TIGHTENER ROLL H15
20	T81390005	1	D-5	BEARING 608 2RS
21	T81105701	1	D-5	INNER SNAP RING 0 22
22	T82130001	1	D-5	SPACER
23	T82190011E	1	C-5	TKE BELT TIGHTENER BRACKET
24	T82290007	2	C-3	PIN FOR ROCKER
25	T82110016	2	C-3	ROCKER BUSHING
26	T82110017	1	C-4	TK 500 ROCKER
27	T81105133	6	C-3	BLOCK NUT M 6
28	T81105094	1	E-3	SCREW 12X40
29	<del>T81250067</del>	1	E-3	ROTARY SUPPORT WHEEL 0100 <del>2150167</del> <del>215</del> <del>1250095</del>
30	T81105503	6	D-4	SCREW 6X20
31	T81105551	4	C-3	SCREW 5X70
32	T81105122	4	C-3	NUT M5
33	T82350027	1	D-3	TK 500 CENTRE BRUSH
34	T82100009	1	D-4	BRUSH SHAFT TK 500
35	T81105461	1	D-3	KEY 5X5X15
36	T82130003	2	E-4	SPACER BRUSH SHAFT
37	T81105482	2	E-4	DOWEL 6X8
38	T82260028	2	E-5	080 BEARING' SUPPORT
39	T81390009	2	E-4	BEARING 6202 2RS
40	T81105405	3	D-2	OUTER SNAP RING 0 15
41	T81105420	1	E-5	OUTER SNAP RING 0 12
42	T82230029	1	E-5	BRUSH ADJUSTING FIXING PIVOT
43	T82190005	1	E-5	MAIN BRUSH ADJUSTMENT BRACKET
44	T82105001	2	C-1	SIDE ARM'S FELT WASHER
45	T81390013	2	D-2	BEARING HK 1012
46	T81105230	2	D-2	SCREW 8X10
47	T82130011	1	C-1	SIDE BRUSH SHAFT' SPACER

41" = L

Nylon washer  
Long bolt or  
T81105066

Block  
Gray  
2150167  
1250095

48	T81105124	2	B-2	NUT M8
49	T82250019	1	D-2	PULLEY
50	T81340008	1	F-5	GEARMOTOR, 077 300 RPM
51	T81105325	1	F-1	WASHER 6X24
52	T82125017B	1	B-3	SIDE BRUSH SHEATHING 37"=L
53	T82125018	1	B-2	SIDE BRUSH LIFTING CABLE
54	T82230002	1	B-2	PIN 17X34
55	T81125004	1	B-2	CLAMP 07
56	T81105231	1	B-1	SCREW 8X22
57	T82190004	1	B-2	SIDE BRUSH LIFTING LEVER
58	T81105327	1	B-1	WASHER 8X32
59	T82100012	1	B-1	RING FOR THE SIDE BRUSH BEARING
60	T81260029	6	B-1	BALLS 11/32"
61	T82100019N	1	B-1	TK SIDE BRUSH MOV. TOOTHED RING
62	T81105463	1	F-4	KEY 3X3,7
63	T82110012N	1	C-1	BUSHING FOR BEARINGS
64	T81390012	2	C-1	BEARING 6005 2RS
65	T82100020	1	C-1	IDLE TOOTHED RING
66	T81105416	1	D-1	OUTER SNAP RING 0 25
67	T81105136	1	E-3	BLOCK NUT M 12
68	T82110042	2	D-2	SPACER
69	T82250079	1	D-2	PULLEY 0 27X15
70	T81330009	1	D-2	BELT 0 8 X970
71	T81105326	2	D-2	WASHER 8X24
72	T82260024	1	D-2	SIDE BRUSH SUPPORT
73	T82250034	1	E-1	SIDE BRUSH DRAGGING FLANGE
74	T82350020	1	E-1	SIDE BRUSH
75	T82250080	1	D-2	PULLEY 0 30X15
76	T81105160	3	E-1	SCREW 6X10
77	T82130005	1	E-3	SPACER
78	T81390015	1	C-1	BEARING HK 1412
TAV.2	T82125009	A		COMPLETE BRUSH-LIFTING LEVER
TAV.2	T82315003	B		COMPLETE MOVEMENT RING
TAV.2	T82315008	C		COMPLETE IDLE TOOTH RING
TAV.2	T82310127	D		COMPLETE SIDE BRUSH PPL 70
TAV.2	T82310134	E		SIDE BRUSH SHEATHING + CABLE
TAV.2	T82125016D	F		DRIVE CABLE SHEATH + CABLE
TAV.2	T81380005	G		CARBON BRUSH
TAV.2	T82310112	H		COMPLETE 0 80 BEARING' SUPPORT
TAV.2	T82310291	I		COMPLETE PULLEY 0 27X15
TAV.2	T82310292	L		COMPLETE PULLEY 0 30X15

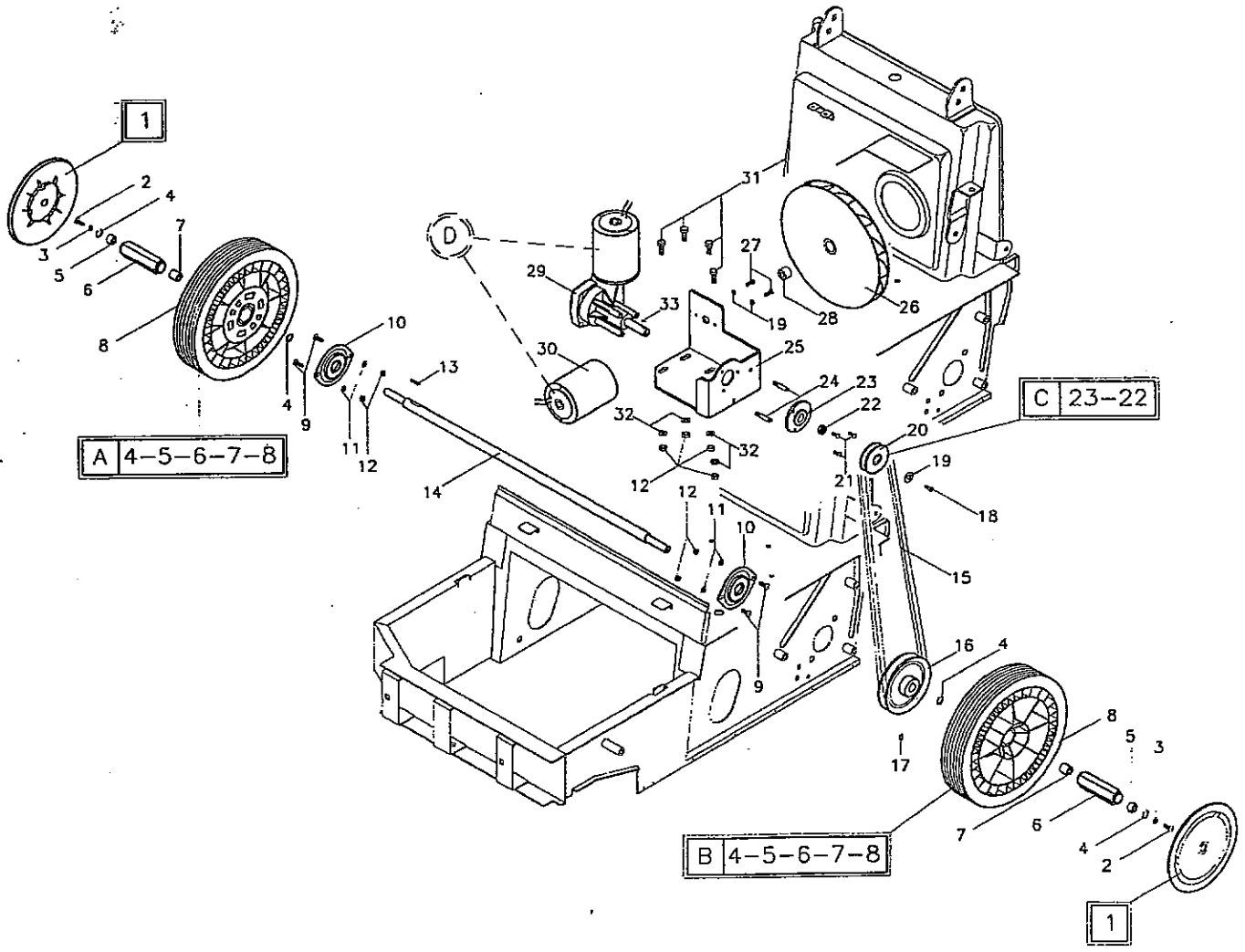
T81380063

MICROSWITCH

T82310501

complete MICRO assembly

COD. 9.600.5003  
ESP. 1 3 4 5  
TAVOLA 3 TK 500ET  
DATA: 11/1997



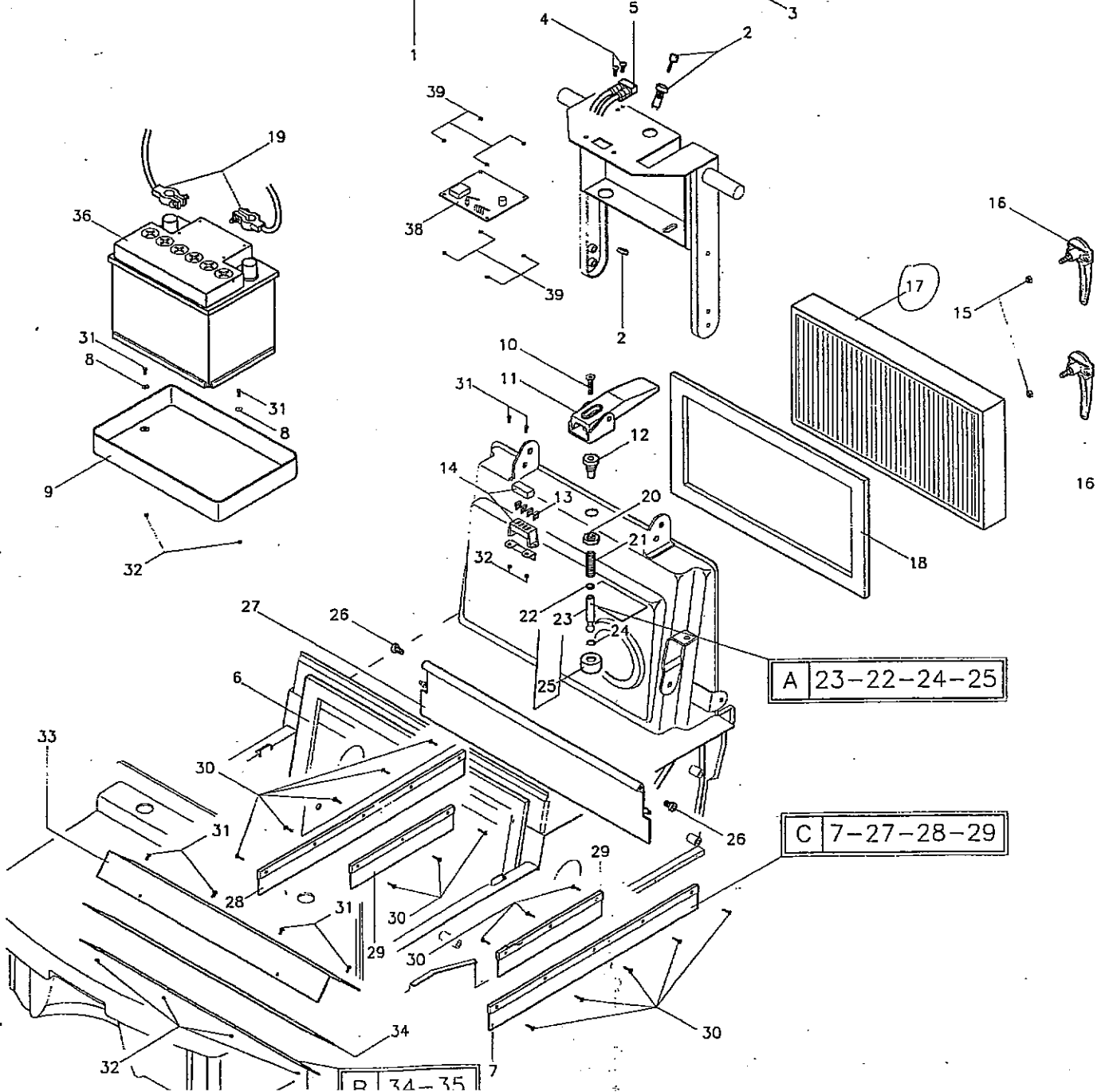
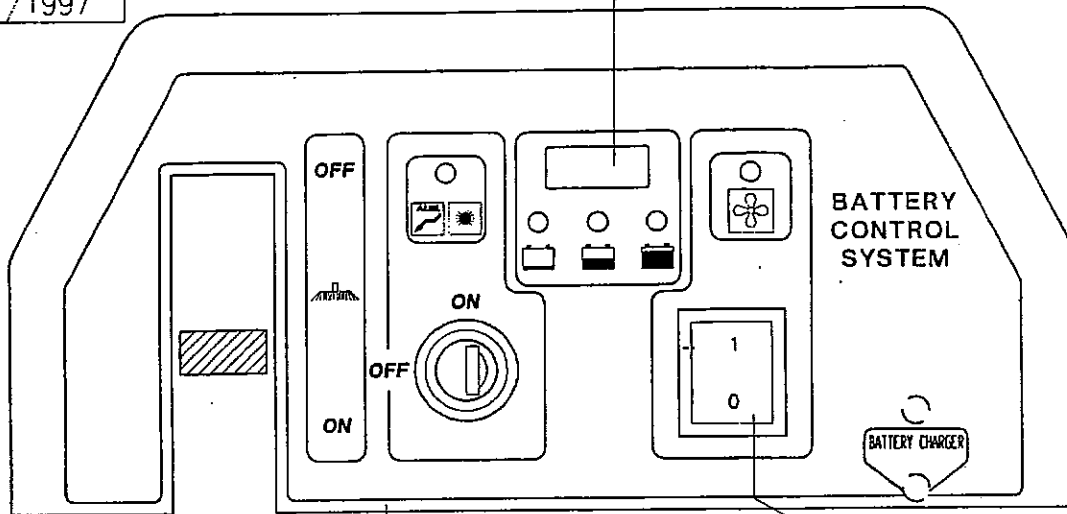
## TK500 - Page 3 - Ref.

REF.	PART #	QTY.	LOC.	DESCRIPTION
1	T82120149	2	C-1	GREY WHEEL'S COVER 0 200
1	T82120084	2	C-1	RED WHEEL'S COVER 0 200
2	T81105234	2	C-1	SCREW 6X10
3	T81105325	2	C-1	WASHER 6X24
4	T81105418	4	C-1	OUTER SNAP RING 0 28 ✓
5	T81390016	2	C-1	BEARING HFL 1426
6	T82110033	2	C-1	EXAGONAL BUSHING
7	T81390015	2	C-1	BEARING HK 1412
8	T82250071	2	D-1	WHEEL 0 250X55
9	T81105222	4	D-2	SCREW 6X16
10	T81390017	2	D-2	SUPPORT SBPFL 203
11	T81105303	4	D-2	WASHER 6X12
12	T81105133	8	D-2	BLOCK NUT M 6
13	T81105464	1	D-2	KEY 5X5X20
14	T82100006	1	D-2	DRIVE SHAFT
15	T81330006	1	D-4	BELT Z30 3/4 10 X
16	T82250029	1	E-4	PULLEY 0 140
17	T81105481	1	E-4	DOWEL 6X10
18	T81105001	1	D-4	SCREW 4X12
19	T81105323	3	D-4	WASHER 5X20
20	T82250030	1	D-4	PULLEY 0 55
21	T81105235	3	D-4	SCREW 6X20
22	T81390007	1	D-4	BEARING 6000 2RS
23	T82260032	1	D-4	BEARING SUPPORT
24	T82230005	2	D-4	BELT SUPPORT PIN
25	T82260026	1	D-4	MOTORS SUPPORT
26	T81290002	1	C-4	FAN 0 200
27	T81105022	2	C-4	SCREW 5X16
28	T82110003	1	C-4	FAN BUSHING
29	T81340008	1	C-3	DRIVE GEAR MOTOR 0 77
30	T81340002	1	D-3	MOTOR WITH 077 SMOOTH SHAFT
31	T81105162	4	C-3	SCREW 6X16
32	T81105324	4	D-3	WASHER 6X18
33	T81105463	1	D-3	KEY 3X3,7
TAV.3	T82310099N	A		COMPLETE RIGHT WHEEL
TAV.3	T82310100N	B		COMPLETE LEFT WHEEL
TAV.3	T82310117	C		COMPLETE SUPPORT
TAV.3	T81380005	D		CARBON BRUSH



COD. 9.600.5004  
 ESP. 1 2 3 4 5  
 TAVOLA 4 TK 500ET  
 DATA: 11/1997

37 OPTIONAL



A 23-22-24-25

C 7-27-28-29

D 34-35

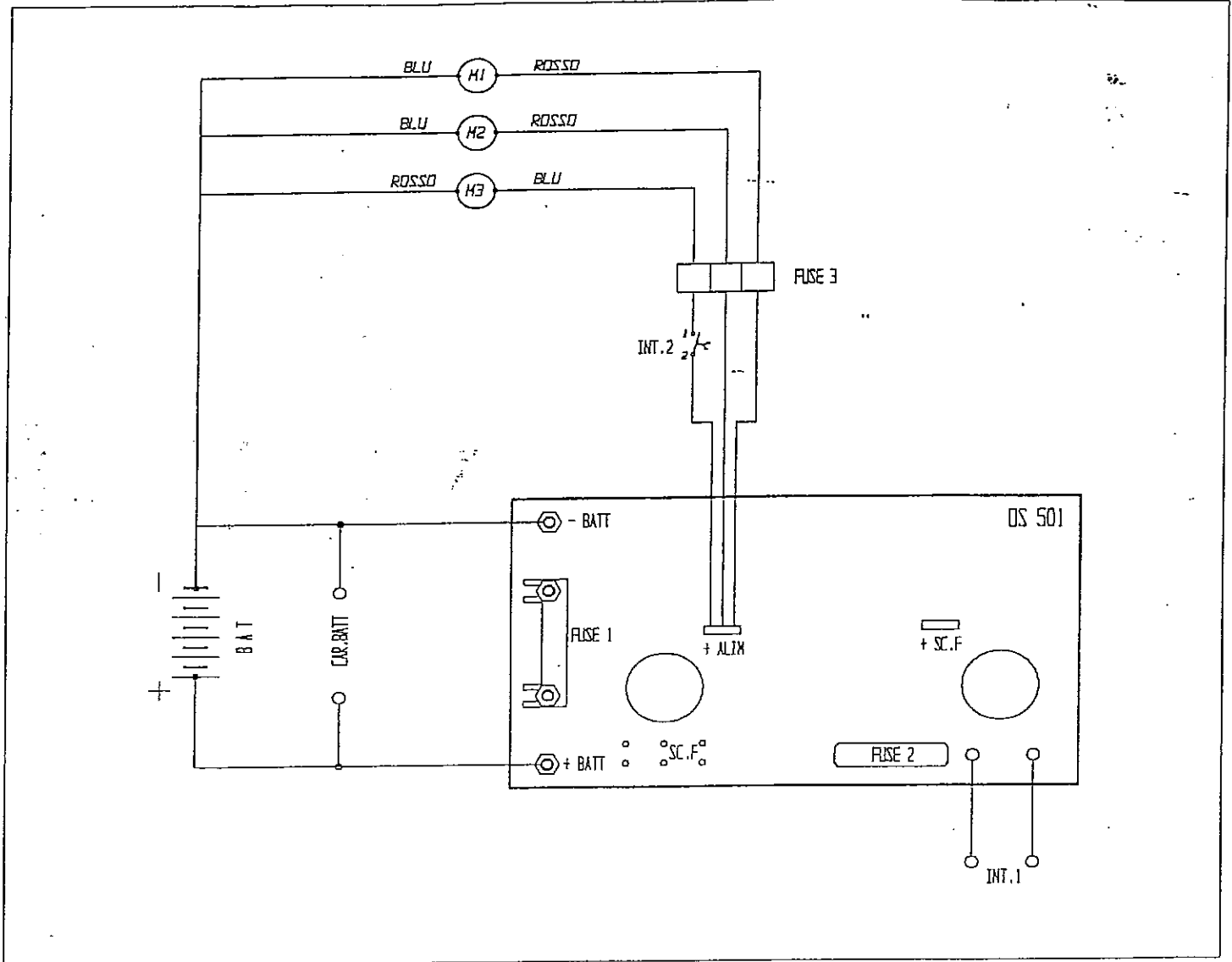
T80003  
 Battery Cable with Anderson Plug  
 Key only  
 T81076

## TK500 - Page 4 - Ref.

REF.	PART #	QTY.	LOC.	DESCRIPTION
1	T86911072	1	B-3	TK 500 E DASHBOARD'S PLATE
2	T813801001	1	C-4	KEY SWITCH
3	T81380009	1	B-4	BIPOLAR SWITCH
4	T81105363	2	C-3	SCREW 5X20
5	T81380008	1	C-3	BATT. CHARGER CONNECTOR
6	T82160033	1	E-2	ADHESIVE KIT FOR FRONT DRAWER
7	T82160060	1	F-3	LEFT SIDE FLAP TK 500/TK700
8	T81105302	2	D-1	WASHER 5X10
9	T82120020	1	D-1	BATTERY CONTAINER
10	T81105504	1	D-3	SCREW 6X25
11	T82310105	1	D-3	COMPLETE FILTERSHAKER'S LEVER
12	T82165005	1	D-3	FILTERSHAKER'S RAIL
13	T81380023	4	D-3	FUSE 30A
14	T81380004	1	D-3	FUSE BOX + COVER
15	T81105064	2	C-5	SCREW 8X25
16	<del>T82260027</del>	1	D-5	FILTER FIXING BRACKET T82310410
17	T82360002	1	D-4	FILTER TK 500 T82350001 95%
18	T82160052	1	D-4	FILTER GASKETS KIT TK 500
19	T81180037	1	C-2	ELECTRICAL INSTALLATION TK 500
20	T81105221	1	D-3	NUT M18
21	T82205006	1	D-3	FILTERSHAKER'S SPRING
22	T81160049	1	E-3	OR 106 GASKET
23	T82230018	1	E-3	PIN
24	T81105702	1	E-3	INNER SNAP RING 0 16
25	T82205007	1	E-3	ARTICULATED BAR
26	T81105232	2	E-2	SCREW 10X16
27	T82160035	1	E-3	BACKSIDE FLAP TK 500
28	T82160036	1	F-2	RIGHT SIDE FLAP TK500/TK700
29	T82160055	2	F-3	INNER FLAP TK
30	T81105356	16	F-3	SCREW 3,5X9,5
31	T81105002	8	F-2	VITE TE 4X16
32	T81105121	8	F-1	NUT M4
33	T82150023	1	F-2	FLAP FIXER TK 500
34	T82160042	1	F-2	FRONT DRAWER RUBBER TK 500
35	T82160043	1	F-2	FRONT DRAWER PARA TK 500
36	T81180003	1	C-1	12V 80 AH BATTERY
37	T813801000	1	A-3	HOURMETER LCD
38	T82180009	1	C-3	12V MOTOR BLOCKING DRIVE CIRCUIT BOARD
39	T81105122	8	C-3	NUT M 5
TAV.4	T82310106	A		COMPLETE FILTERSHAKER JOINTED ROD
TAV.4	T82310096	B		TK 500 FRONT DRAWER FLAP'S KIT
TAV.4	T82310095	C		TK 500 FRAME FLAP'S KIT

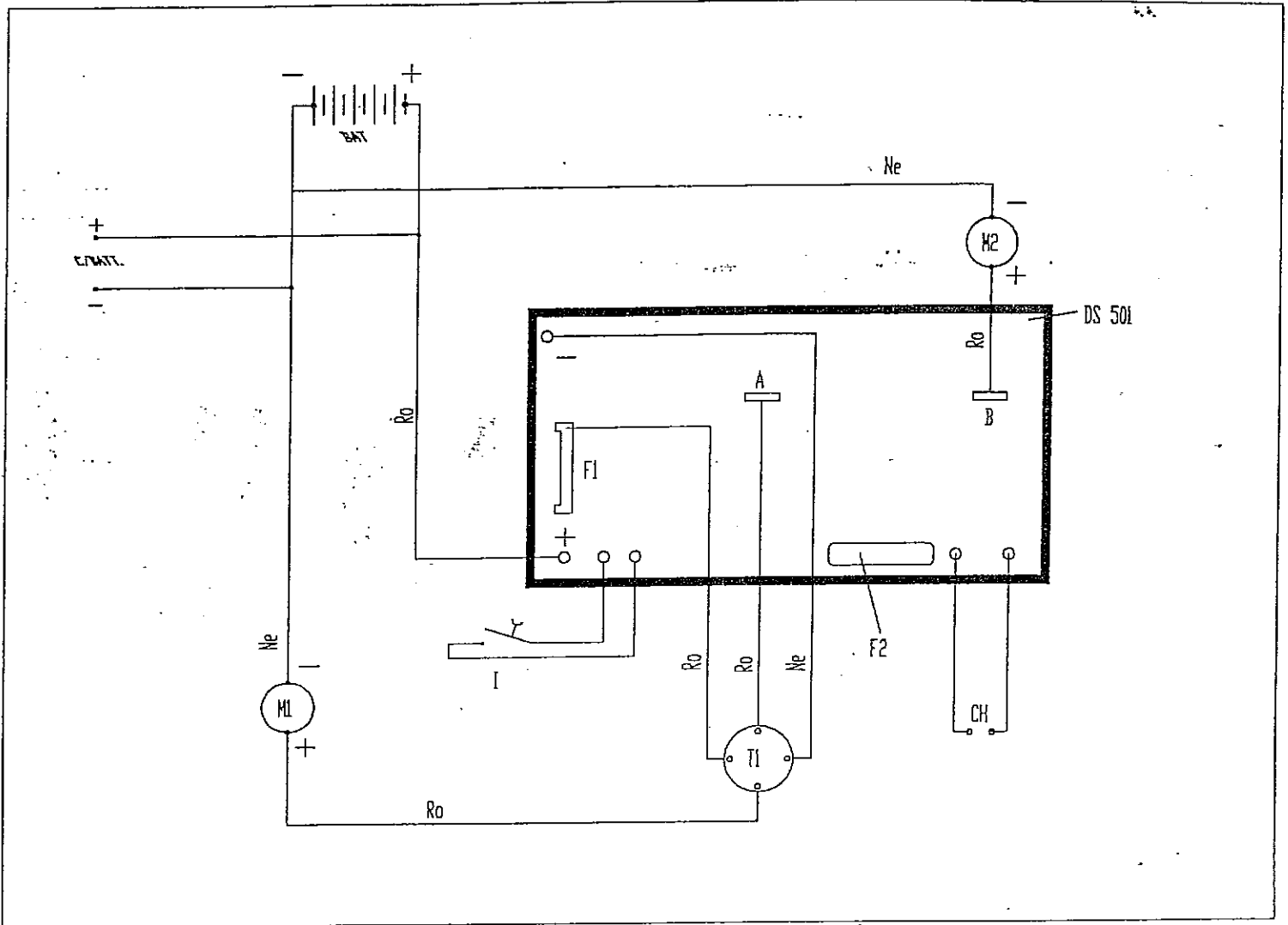
efficient, washable  
 3 micron & 75<sup>30</sup>  
 DIST.

TK700 + TK500



M 1:	Motore spazzola centrale	Main brush motor
M 2:	Motore trazione	Traction motor
M 3:	Motore ventola	Fan motor
Fuse 1:	50A a barra	50A Bar fuse
Fuse 2:	1A/250V	1A/250V fuse
Fuse 3:	Lammellare 30A	30A fuse
I 1:	Interruttore a chiave	Key switch
I 2:	Interruttore ventola	Fan switch
Car. Batt:	Presca ricarica batteria	Battery recharge socket

# TK700 + TK500



**CH:** Interruttore a chiave

**F1:** Fusibile a barra 50A

**F2:** Fusibile 1A/250V

**M1:** Motore

**M2:** Motore scuotifiltro (optional)

**T1:** Rele

**BAT:** Batteria

**C/BATT:** Presa carica batteria

**A:** Alimentazione +

**B:** Collegamento mot. scuotifiltro +

**Ro** Cavo collegamento ROSSO

**Ne:** Cavo collegamento NERO

Key switch

50A bar fuse

1A/250V fuse

Motor

Filtershaker's motor (optional)

Relais

Battery

Batterie charger socket

Alimentation +

Filtershaker's motor link +

RED link cable

BLACK link cable

EPP TK500ET 700ET TROUBLE SHOOTING

PROBLEM	CAUSE	REMEDY
MAIN BROOM NOT SPINNING	A WIRE IS DETACHED MOTOR HAS BURNED OUT GEARS ARE BAD FUSE	CHECK AND REATTACH CHECK AND REPLACE CHECK AND REPLACE CHECK AND REPLACE
SIDE BROOM IS NOT SPINNING	BELT IS BROKEN GUIDE WHEEL PULLEYS ARE BROKEN BEARINGS ARE BAD TOOTH RINGS ARE WORN	REPLACE REPLACE REPLACE REPLACE
BATTERY DOES NOT STAY CHARGED	TERMINAL IS LOOSE CHARGER DOES NOT WORK FLUID LEVELS LOW BATTERY IS BAD	TIGHTEN CHECK VOLTAGE/NEW CHARGER ADD WATER VOLTAGE CHECK
DUST COMES OUT OF THE FAN	GASKETS ARE WORN HOLE IN FILTER	CHECK AND REPLACE CHECK AND REPLACE
BROOMS WEAR OUT QUICKLY	BROOM IS ADJUSTED TOO LOW ROUGH SURFACE	ADJUST 1/4" TO 1/2" CONTACT TO FLOOR NORMAL
RUN TIMES ARE LOW	BATTERY IS NOT FULLY CHARGING BRUSHES ARE TOO LOW CHARGED TOO FREQUENTLY	CHECK VOLTAGE/NEW CHARGER REPLACE BATTERY ADJUST CHARGE PERIODICALLY
VACUUM MOTOR DOES NOT WORK	MOTOR IS BURNED OUT WIRE IS DISCONNECTED SWITCH IS BAD FUSE	REPLACE CHECK CHECK WITH OHM METER
MACHINE DOESN'T TURN ON	BATTERY TERMINAL IS DISCONNECTED COVER SCREWS NOT ACTIVATING MICRO-SWITCH WIRE IS LOOSE BATTERY IS DISCHARGED BAD SWITCH BAD BOARD FUSE ON BOARD	CHECK AND RETIGHTEN CHECK AND REATTACH CHECK AND REATTACH CHECK AND REPLACE CHECK AND REPLACE CHECK AND REPLACE CHECK AND REPLACE